

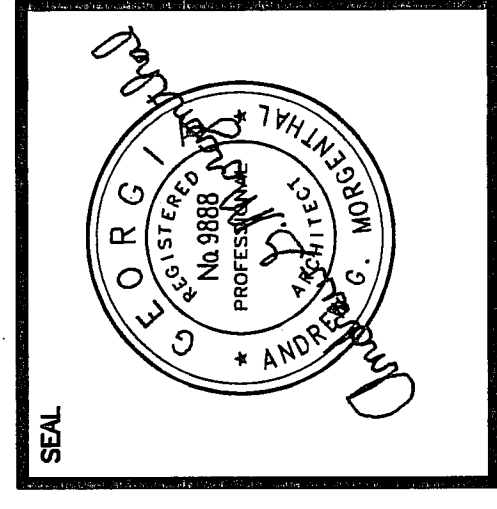
NO.	DATE	DESCRIPTION
1	10/29/04	ISSUE SET
2	02/09/04	PERMIT SET

THESE DRAWINGS ARE THE PROPERTY OF KGM ARCHITECTS, P.C. AND ARE TO BE USED ONLY FOR THE PROJECT SPECIFICALLY IDENTIFIED HEREON. ANY REUSE OR REPRODUCTION OF THESE DRAWINGS ON OTHER PROJECTS WITHOUT PERMISSION TO THIS PROJECT IS STRICTLY PROHIBITED. ANY REUSE OR REPRODUCTION OF THESE DRAWINGS IS AT THE USER'S SOLE RISK AND WITHOUT LIABILITY TO KGM ARCHITECTS, P.C.

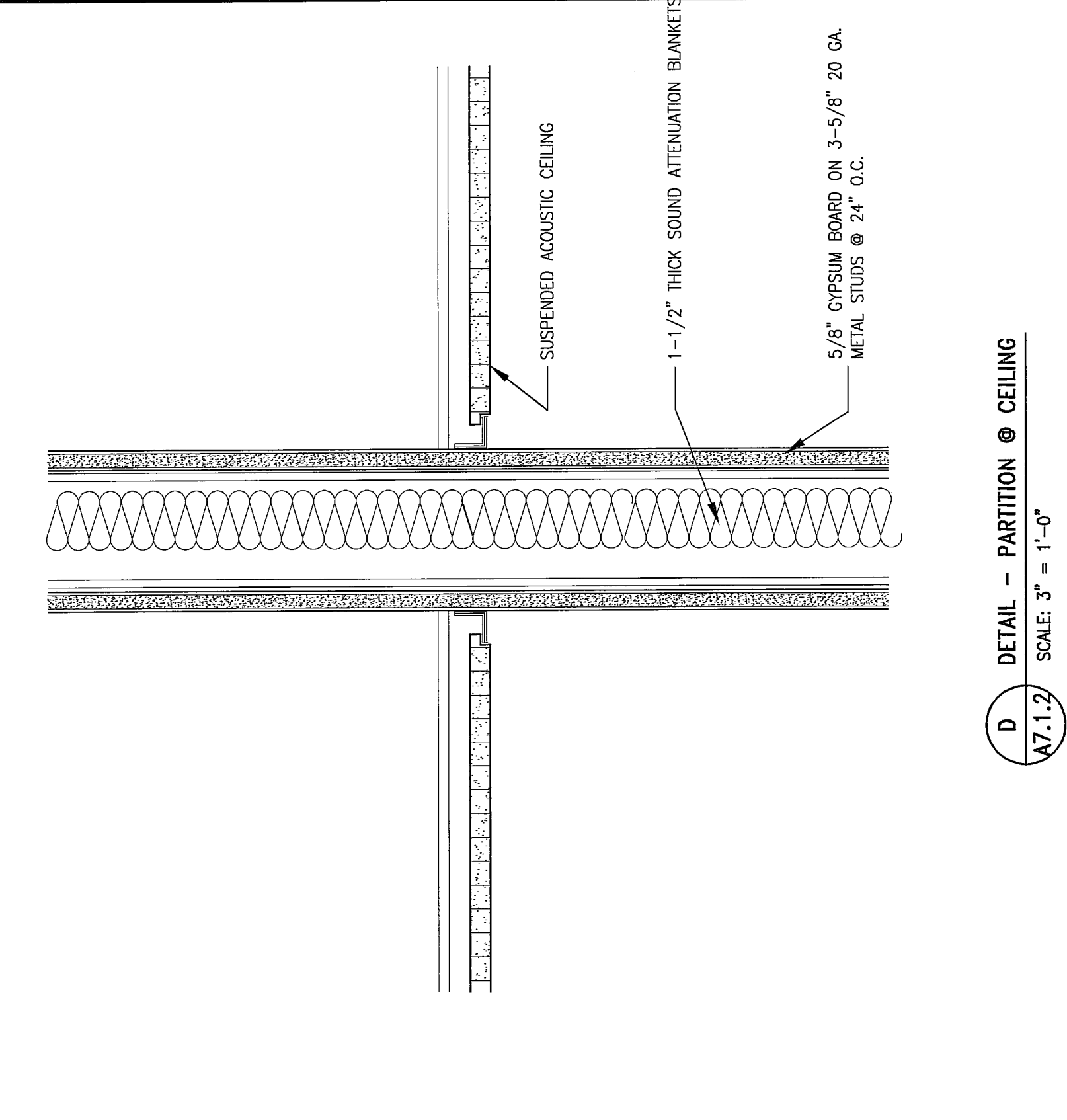
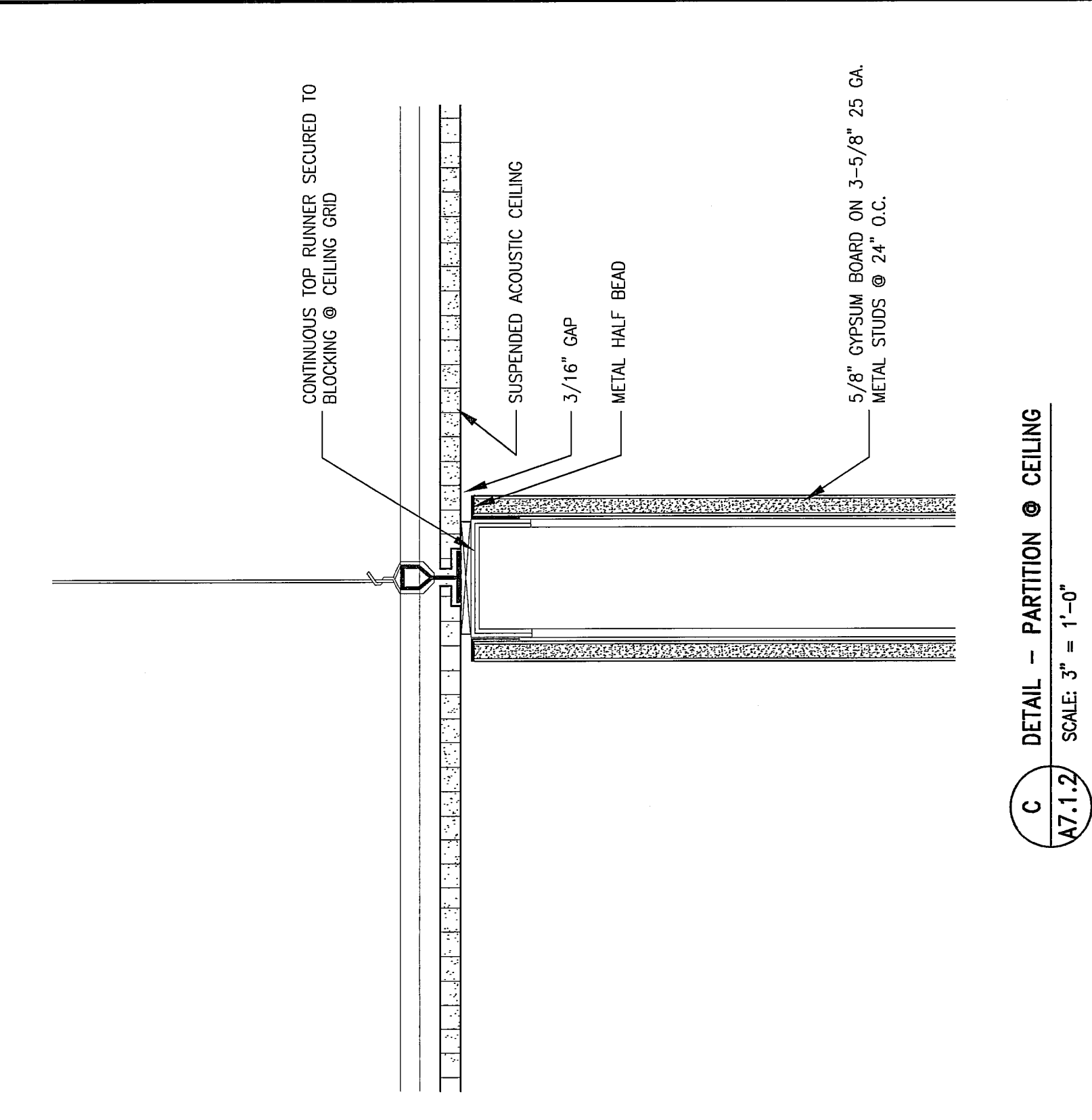
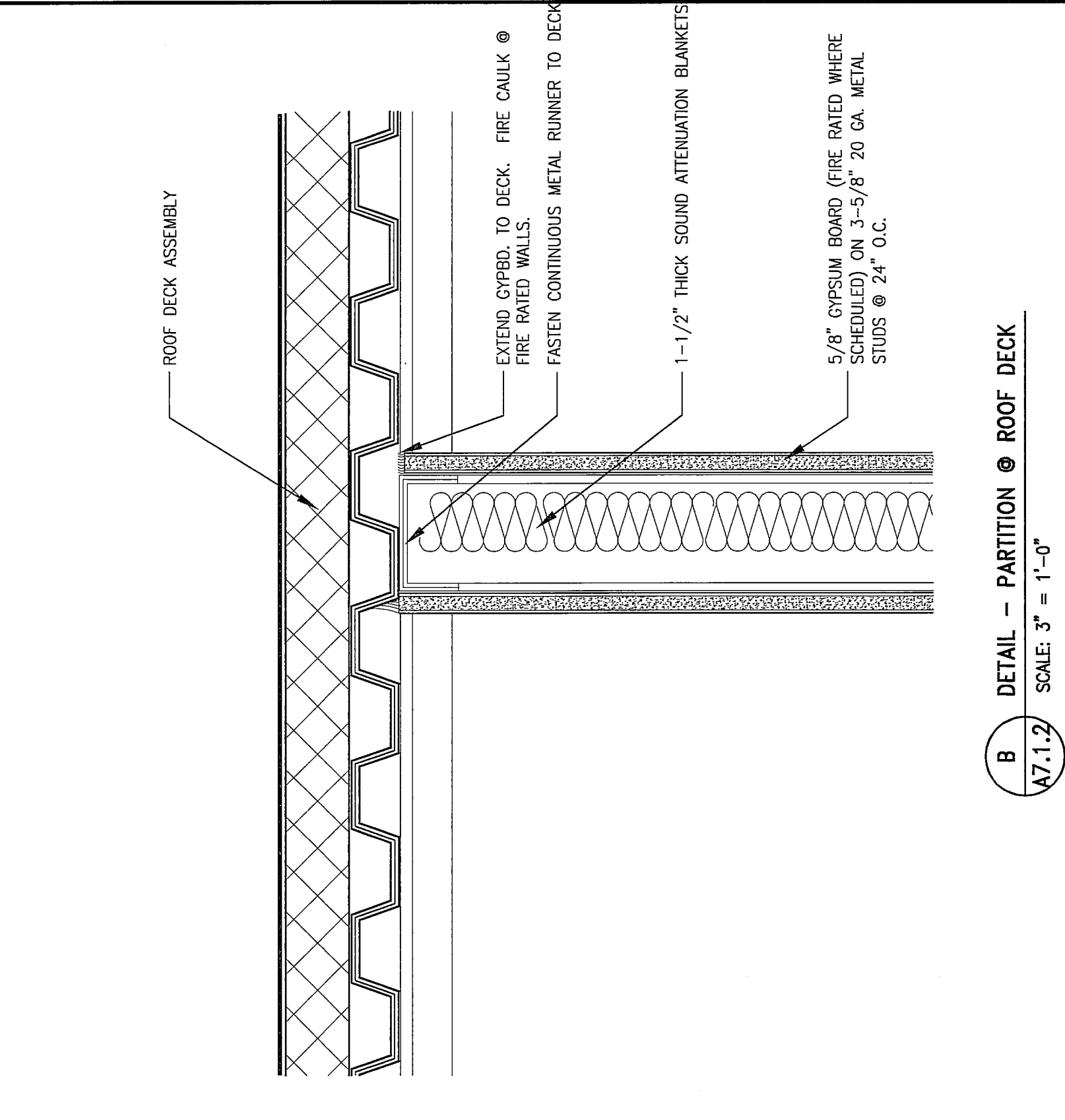
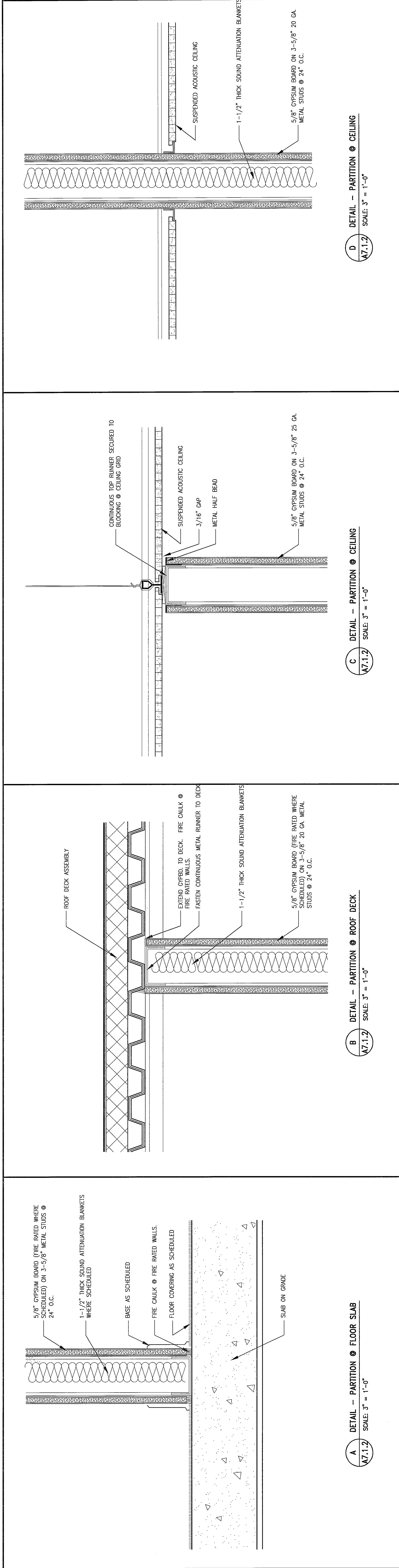
NO.	DATE	DESCRIPTION



POLYVISION
 INTERNATIONAL
 A Development of Technology Park/Atlanta, Inc.
 SUITE 326, 3970 JOHNS CREEK COURT DULUTH, GEORGIA 30156
 KOHL GRAMIGNA MONARDO ARCHITECTS, P.C.
 270 Scientific Drive, Suite 17, Norcross, Georgia 30092 770-448-2743 www.kgmarchitects.com



SHEET TITLE		SHEET NUMBER
PARTITION TYPES & DETAILS		A7.1.2
PROJECT NO.	4.002.01	ISSUE DATE
FEB. 09, 2004		OF 1



NOTE: BUILDING MATERIAL SHALL HAVE A FLAME SPREAD RATING OF NOT MORE THAN 25 AND A SMOKE-DEVELOPED INDEX OF NOT MORE THAN 450 AS DETERMINED IN ACCORDANCE WITH ASTM E 84.

