



**MADDEN**  
 CIVIL ENGINEERS  
 431 E. Horatio Avenue  
 Suite 280 32751  
 Maitland, FL 32751  
 (407) 629-8330

ORLANDO GATEWAY COMMERCIAL CENTER, PHASE 1  
 FOR  
**CITY CONSTRUCTION DETAILS**  
 ORLANDO GATEWAY PARTNERS, L.L.C.  
 21 NORTH MAIN STREET, SUITE 202  
 ALPHARETTA, GA 30004  
 (678) 297-7900

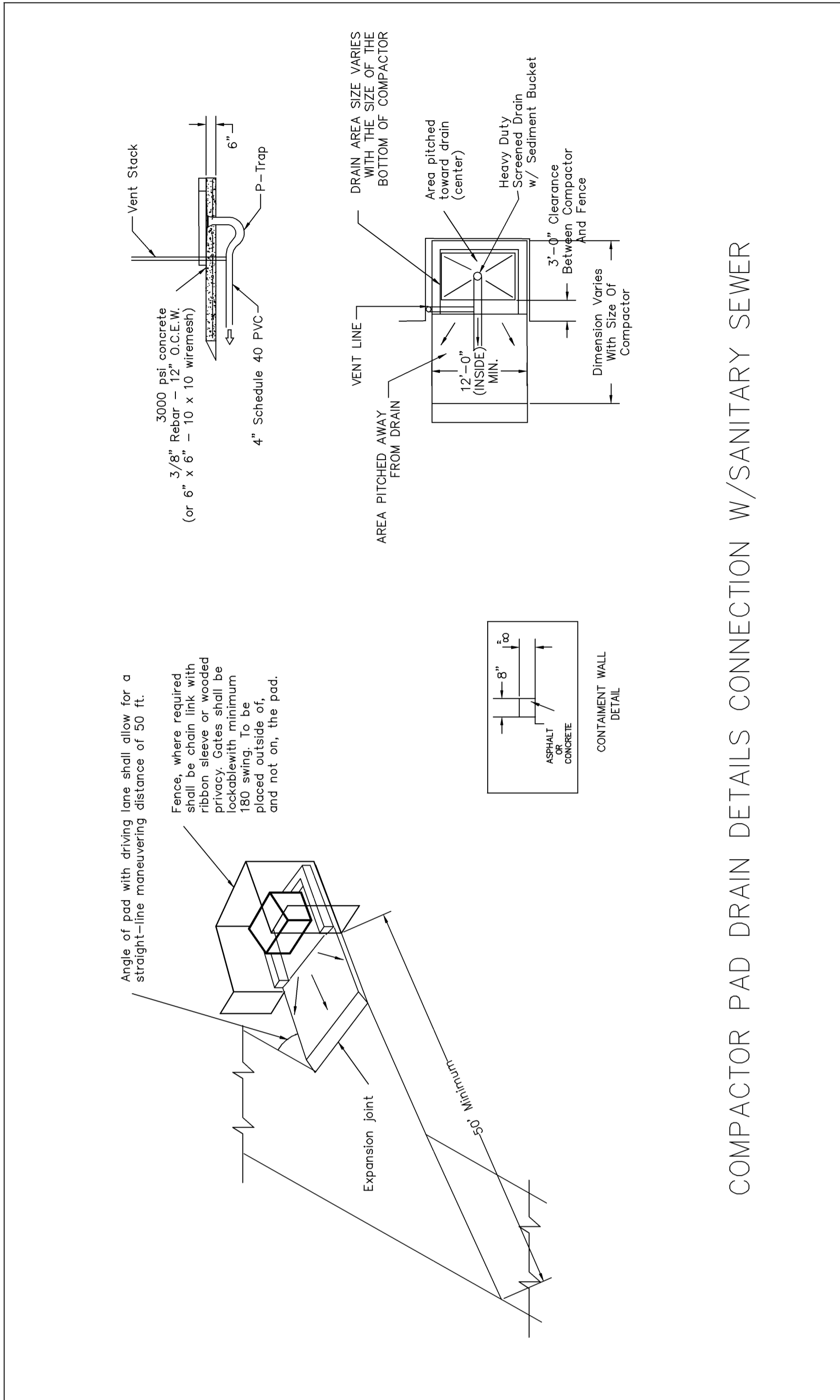
ORLANDO  
 CIVIL ENGINEERS  
 431 E. HORATIO AVENUE  
 SUITE 280  
 MAITLAND, FL 32751  
 (407) 629-8330

DAVID F. GLUNT P.E. #57459  
 CERTIFICATE OF AUTHORIZATION NO. EB-0007723  
 ENGINEER IN CHARGE:

NO.	DATE	REVISIONS
1	11/5/08	SHEET CREATED PER CLIENT REQUEST
2		
3		
4		
5		
6		
7		
8		
9		
10		
11		

JOB # 08032  
 DATE: 10/07/08  
 SCALE: NOT TO SCALE  
 DESIGNED BY: N/A  
 DRAWN BY: N/A  
 APPROVED BY: DFG

**OCD-3**



COMPACTOR PAD DRAIN DETAILS CONNECTION W/SANITARY SEWER