

THE DRAWING AND ANY INSTRUMENTS ARE THE PROPERTY OF bdg ARCHITECTS. ANY REPRODUCTION OR ALTERATION OF THIS DRAWING WITHOUT THE WRITTEN PERMISSION OF bdg ARCHITECTS IS STRICTLY PROHIBITED. THE DRAWING IS FOR INFORMATION ONLY AND IS NOT TO BE USED FOR CONSTRUCTION. THE CONTRACTOR IS RESPONSIBLE FOR VERIFYING THE WORK OF ANY INSTRUMENTS AND FOR THE WORK OF ANY INSTRUMENTS. THE CONTRACTOR SHALL BE RESPONSIBLE FOR THE WORK OF ANY INSTRUMENTS.

Imagine International Academy
2144 S. Cobb Drive
Smyrna, GA. 30080

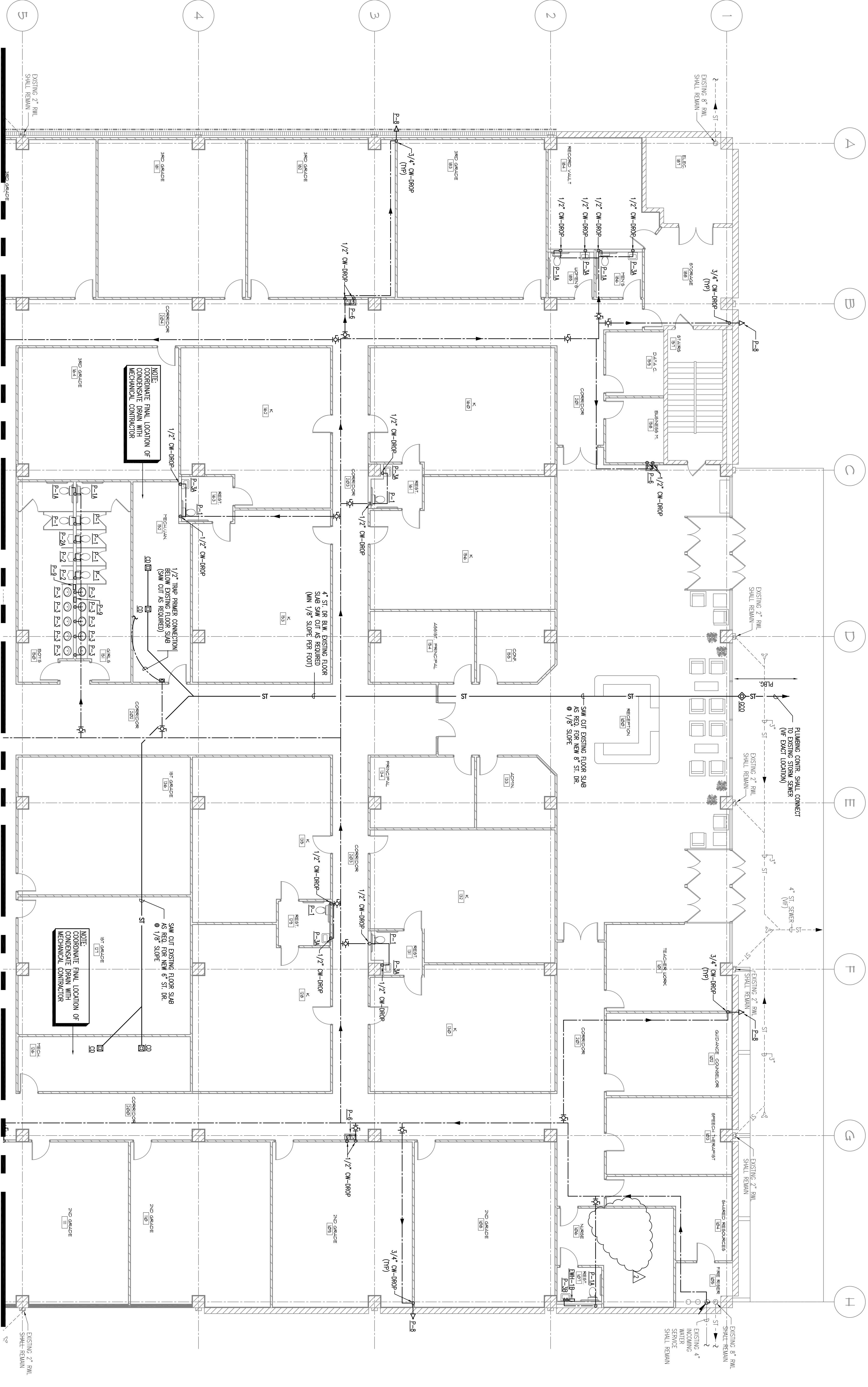
Oakhurst Realty Partners
217 N. McDonough St., Suite 200 Decatur, GA. 30030

REV.	DATE & COMMENTS	BY
1	ADDITION #1	ROR
2	FIELD COORDINATION	ROR
3	5-12-2009	
4		
5		

JOB NUMBER: 09033
DATE: MARCH 20, 2009
DRAWN BY: ROR
SCALE: AS NOTED
DRAWING: PARTIAL FIRST FLOOR - PLUMBING DOMESTIC AND STORM WATER PLAN

SHEET NUMBER
P-8

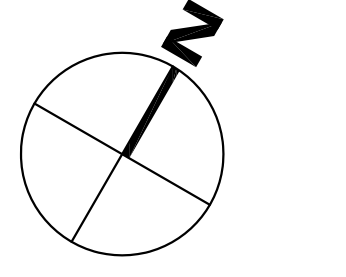
Signature: _____ Date: _____
DEAN S. KENYON, P.E.
GA. LIC. NO. 022813



PARTIAL FIRST FLOOR (UPPER) - PLUMBING DOMESTIC AND STORM WATER PLAN

SCALE: 1/8"=1'-0"

KPI ENGINEERING, INC.
PROFESSIONAL ENGINEERS
3283 BUCKLE UP DRIVE
TAMPA, FL 33611
PHONE: (813) 241-6488
FAX: (813) 241-6488
Board of Professional Engineers - License # 27338



KEY PLAN

