

THIS DRAWING AND ANY REPRODUCTIONS ARE THE PROPERTY OF THE ARCHITECTS, AND MAY NOT BE REPRODUCED, PUBLISHED, MODIFIED, OR USED IN ANY WAY WITHOUT EXPRESS WRITTEN NOTICE FROM THE ARCHITECT. DRAWINGS AND ANY REPRODUCTIONS OF THEM SHALL NOT BE SCALED OFF FOR ANY PURPOSE. ANY DISCREPANCIES IN THE DRAWINGS SHALL BE REFERRED IMMEDIATELY TO THE ARCHITECT FOR CLARIFICATION PRIOR TO CONTINUING WITH THE WORK. COMMENCEMENT WITH THE WORK SHALL BE CONSIDERED ACCEPTANCE OF THE INTEGRITY OF THE DRAWINGS. THE CONTRACTOR IS RESPONSIBLE FOR THE COORDINATION, SCHEDULING, AND CONFORMANCE OF THE WORK OF INCLUDED TRADES. COPYRIGHT 2009, BDG ARCHITECTS, INC. ALL RIGHTS RESERVED.

Imagine International Academy
2144 S. Cobb Drive
Smyrna, GA. 30080

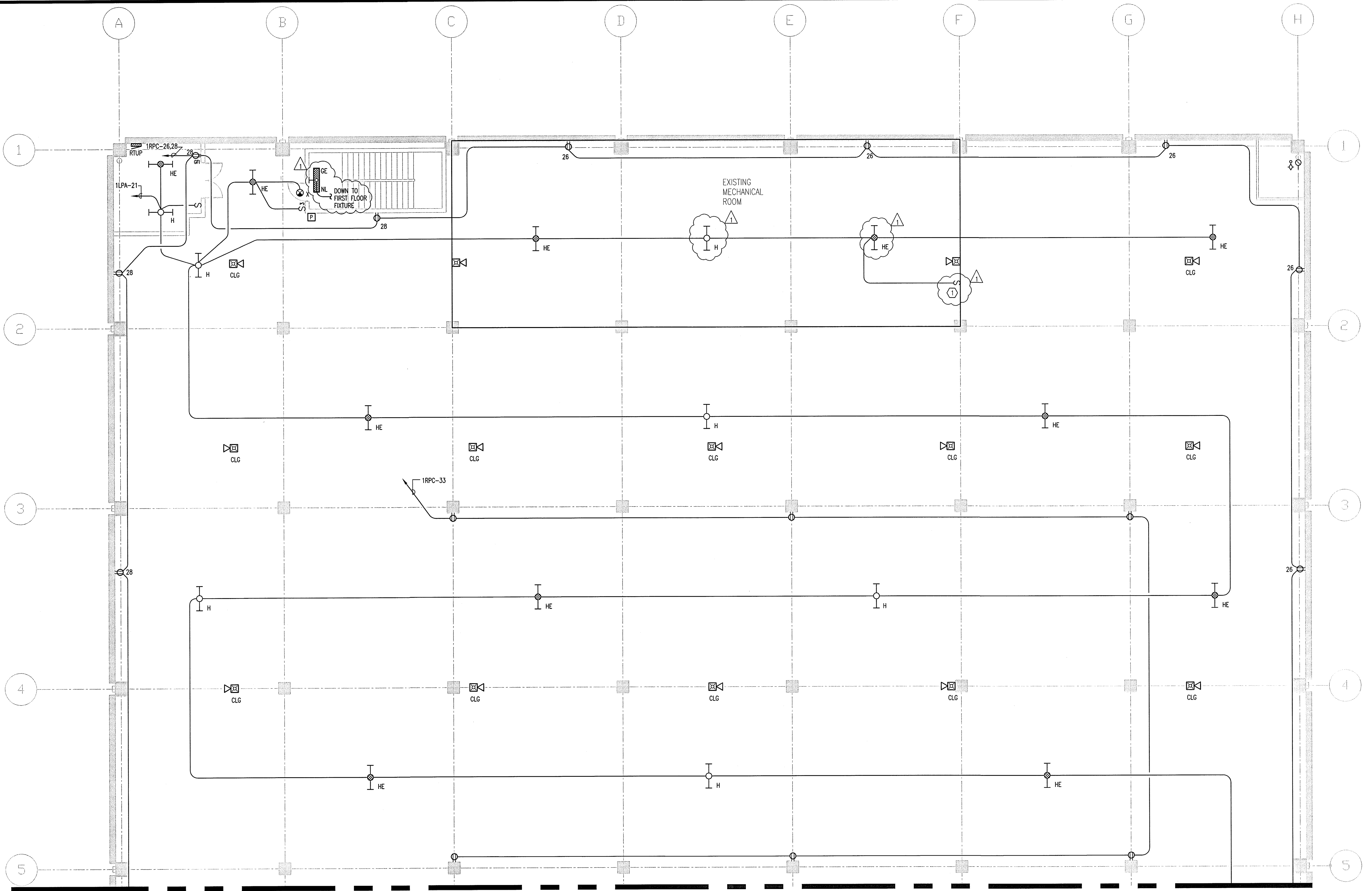
Oakhurst Realty Partners
217 N. McDonough St., Suite 200 Decatur, GA. 30030

REV.	DATE & COMMENTS	BY
1	ADDENDUM #1	4-17-2009

JOB NUMBER: 08033
DATE: MARCH 20, 2009
DRAWN BY: RHL
SCALE: AS NOTED
DRAWING: PARTIAL SECOND FLOOR UPPER

LIGHTING, POWER AND SYSTEMS PLAN
SHEET NUMBER
E-11

RICHARD L. HOCUTT P.E.
GA. LIC. No. 033321
Signature _____ Date _____



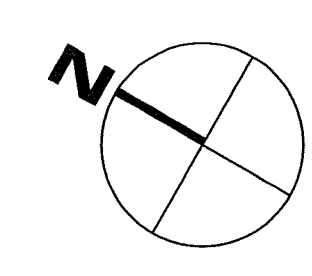
MATCH LINE A-A (SEE SHEET E-12)

PARTIAL SECOND FLOOR (UPPER) - LIGHTING, POWER AND SYSTEMS PLAN

SCALE: 1/8"=1'-0"

CONSTRUCTION NOTES
① COORDINATE LIGHT SWITCH LOCATION WITH DOOR ENTRY.

KPI
ENGINEERING, INC.
PROFESSIONAL ENGINEERS
3203 QUEEN PALM DRIVE
TAMPA, FLORIDA 33619
PHONE (813) 241-6488
FAX (813) 241-6498
Board of Professional Engineers - License # 27336



KEY PLAN

