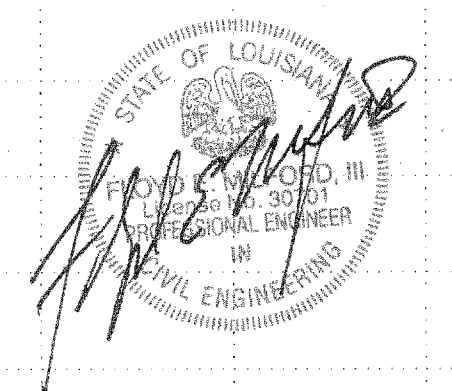
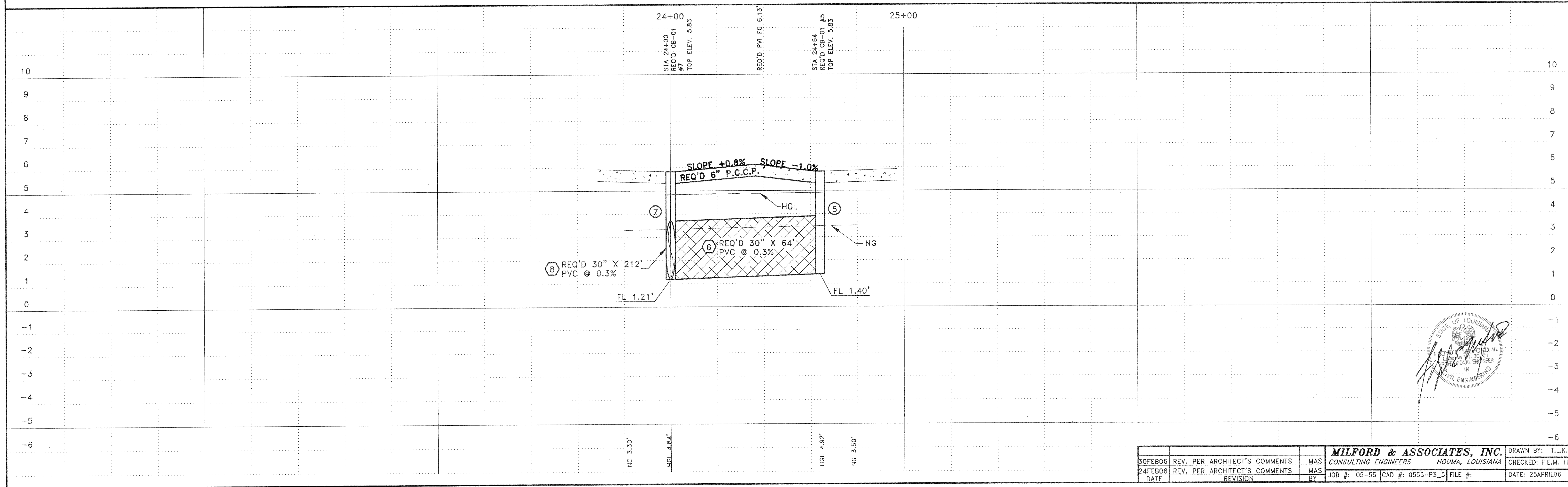


SCALES:
 VERTICAL 1" = 2'
 HORIZONTAL 1" = 20'



30FEB06	REV. PER ARCHITECT'S COMMENTS	MAS	MILFORD & ASSOCIATES, INC. CONSULTING ENGINEERS HOUMA, LOUISIANA	DRAWN BY: T.L.K.
24FEB06	REV. PER ARCHITECT'S COMMENTS	MAS		CHECKED: F.E.M. III
DATE	REVISION	BY	JOB #: 05-55 CAD #: 0555-P3_5 FILE #:	DATE: 25APRIL06

