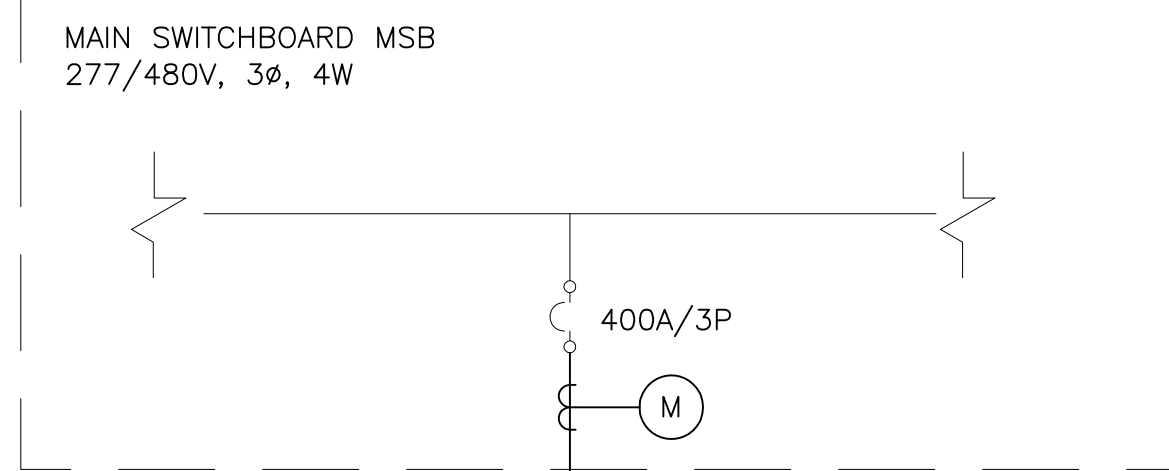
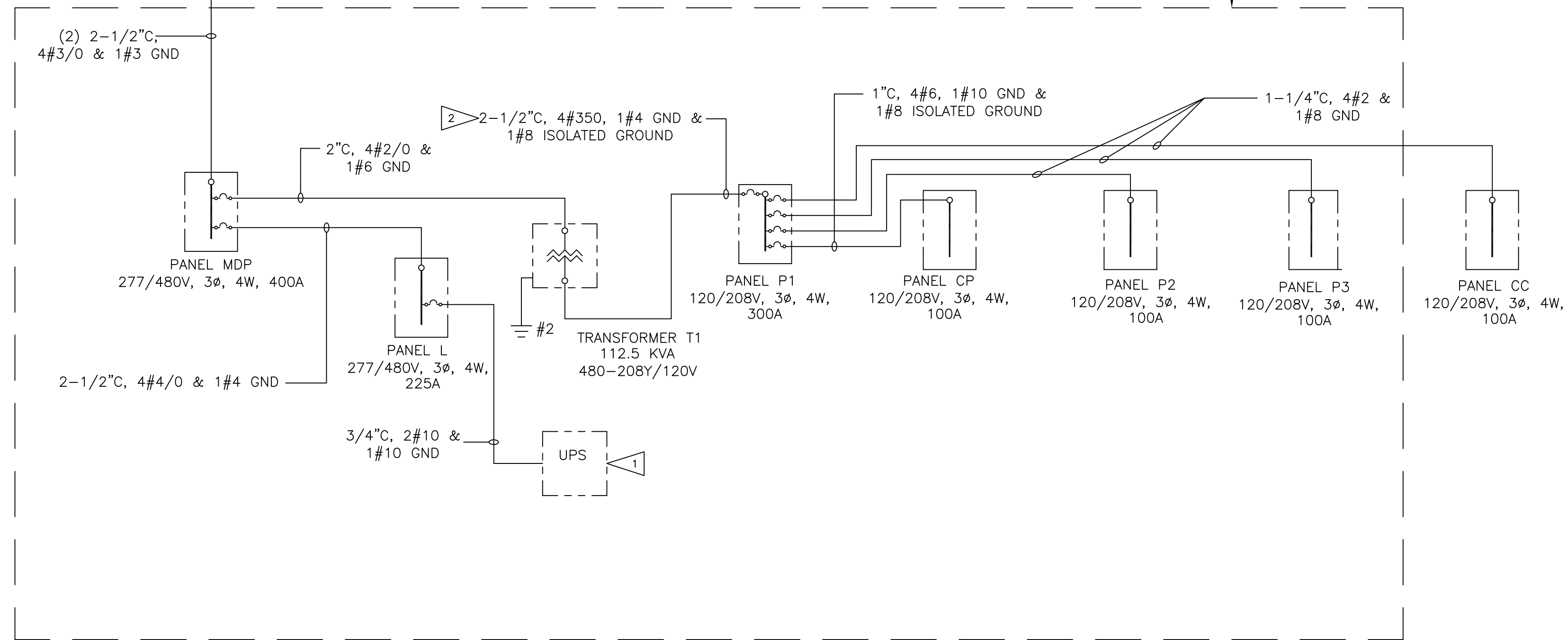


EXISTING LANDLORD METER DISTRIBUTION SWITCHBOARD
MSB-1



EDC NOTES:
ELECTRICAL DISTRIBUTION CENTER ("EDC") SHALL BE PURCHASED FROM EDC VENDOR (TO INCLUDE ALL EQUIPMENT INSTALLED AND PRE-WIRED AS SHOWN IN DASHED BOXED AREA ON ONE LINE DIAGRAM). PLACE ORDER FOR EDC FOUR WEEKS PRIOR TO SHIPMENT DATE NEEDED (SELECT DATE TO ACCOMMODATE THE USE OF EDC FOR TEMPORARY POWER). CONTACT EDC VENDOR FOR COMPLETE PRODUCT PACKAGE PRIOR TO BID.

EDC. REFER TO EDC NOTES.



ONE-LINE DIAGRAM
SCALE: NONE

FLAG NOTE:

- 1 REFER TO DETAIL 6 ON SHEET E-501.
- 2 CONNECT ISOLATED GROUND CONDUCTOR TO TRANSFORMER SECONDARY GROUND ELECTRODE CONDUCTOR.

PANEL SCHEDULE — MDP																	
LOCATION: EDC			TYPE: BOLT-IN C/B			VOLTS: 480 V			3 PH, 4 W								
EQUIPMENT GROUND BUS			MTG: EDC			MAINS: 400 A			MAIN LUGS ONLY								
NO	ITEM	A M P S	CIR NO.	CD LTR	PHASE LOAD			PHASE LOAD			CD LTR	CIR NO.	A M P S	ITEM	NOTE		
					A	B	C	A	B	C							
	BALER	50	3	1	M	3000			12465			M	2	50	3	RTU-02	1
						3000			12465			M	4				
							3000		12465			M	6				
	RTU-01	40	3	7	M	7395			3213			M	8	25	3	RTU-04	
							7395		3213			M	10				
								7395		3213		M	12				
	RTU-03	50	3	13	M	12465			3324			M	14	20	3	CH-01	
							12465		3324			M	16				
								12465		3324		M	18				
	SPACE												20			SPACE	
	SPACE												22			SPACE	
	SPACE												24			SPACE	
	SPACE												26			SPACE	
	SPACE												28			SPACE	
	SPACE												30			SPACE	
	PHASE LOSS TRANSDUCER	20	3	31		10							32			SPACE	
							10						34			SPACE	
								10					36			SPACE	
	PANEL P1/XMMR	175	3	37		29122			8890				38	225	3	PANEL L	
							25418		7474				40				
								21798		6209			42				
	PHASE A — TOTAL CONNECTED LOAD (VA)					79884											
	PHASE B — TOTAL CONNECTED LOAD (VA)						74764										
	PHASE C — TOTAL CONNECTED LOAD (VA)							69879									
CONNECTED AMPS — SECTION 1						288	270	252	DEMAND AMPS = 281.3								

DEMAND CALCULATIONS							PANEL — MDP					
VOLTAGE: 480							3 Ø, 4 WIRE			DATE: January 28, 2008		
DESCRIPTION	ACTUAL LOAD	CONNECTED LOAD (VA)		FACTORS		DEMAND LOAD (VA)	CONTINUOUS USE					
		NEC 220 MIN. LOAD	MAX CONNECTED	DEMAND	CONTINUOUS USE							
L LIGHTING	22,573		22,573	100%	125%	28,216						
T TRACK LIGHTING — feet (75 WATTS PER FOOT)	2501	190	14,250	100%	100%	14,250						
S SHOW WINDOW (WIDTH) — feet (200 WATTS PER FOOT)	0	0	0	100%	100%	0						
R RECEPTACLES THRU 10 KVA	10,000		10,000	100%	100%	10,000						
OVER 10 KVA	74,168		74,168	50%	100%	37,084						
M MOTORS/COMPRESSORS LARGEST	37,395		37,395	125%	100%	46,744						
OTHER	88,191		88,191	100%	100%	88,191						
H RESISTIVE HEATING	3,324		3,324	100%	100%	3,324						
CL COOLING	0		0	100%	100%	0						
K KITCHEN	0		0	65%	100%	0						
C COMPUTER	2,940		2,940	100%	100%	2,940						
MISCELLANEOUS	13,200		13,200	100%	100%	13,200						
TOTAL CONNECTED =						266,041	TOTAL DEMAND =		241,009			
CHECKSUM =						266,041	AMPS =		289.3			

OfficeMax
OWNER:
OFFICEMAX
263 SHUMAN BLVD.
NAPERVILLE, IL 60563

Larson & Darby Group
Architects Engineers Planners
Name Office: 2825 W. Main St., Suite 200, Naperville, IL 60563
Phone Office: 630-335-1100 Fax: 630-335-1105

OfficeMax
STORE #1324
CANTON MARKETPLACE
CANTON, GA.
PROJECT # 17141

ISSUED / REVISED	DATE
BID/PERMIT ISSUE	04-01-08
REVISION 1	06-18-08
REVISION 2	08-04-08

TYPE OF DRAWING SET
REVISION 2 ISSUE

ONE-LINE DIAGRAM & PANEL SCHEDULES
E-601