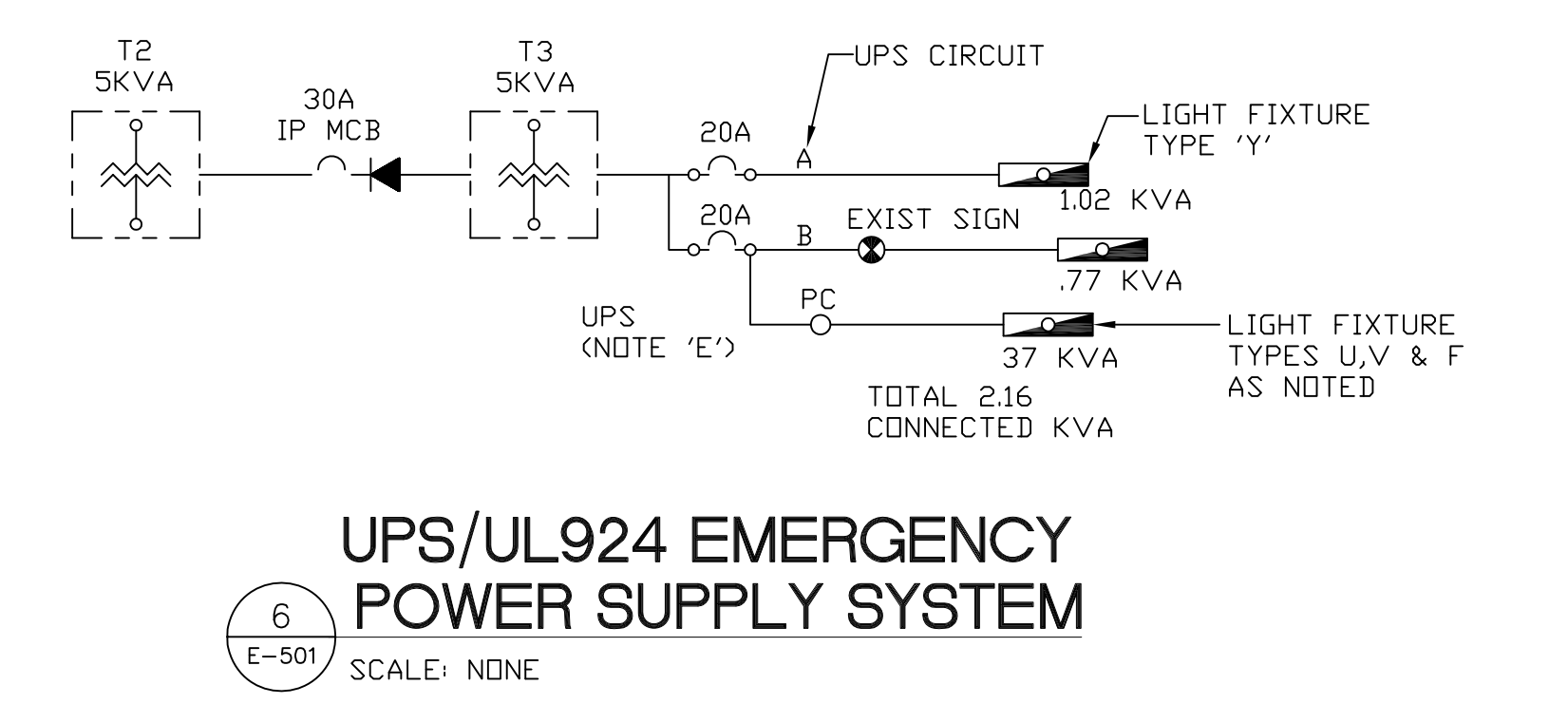


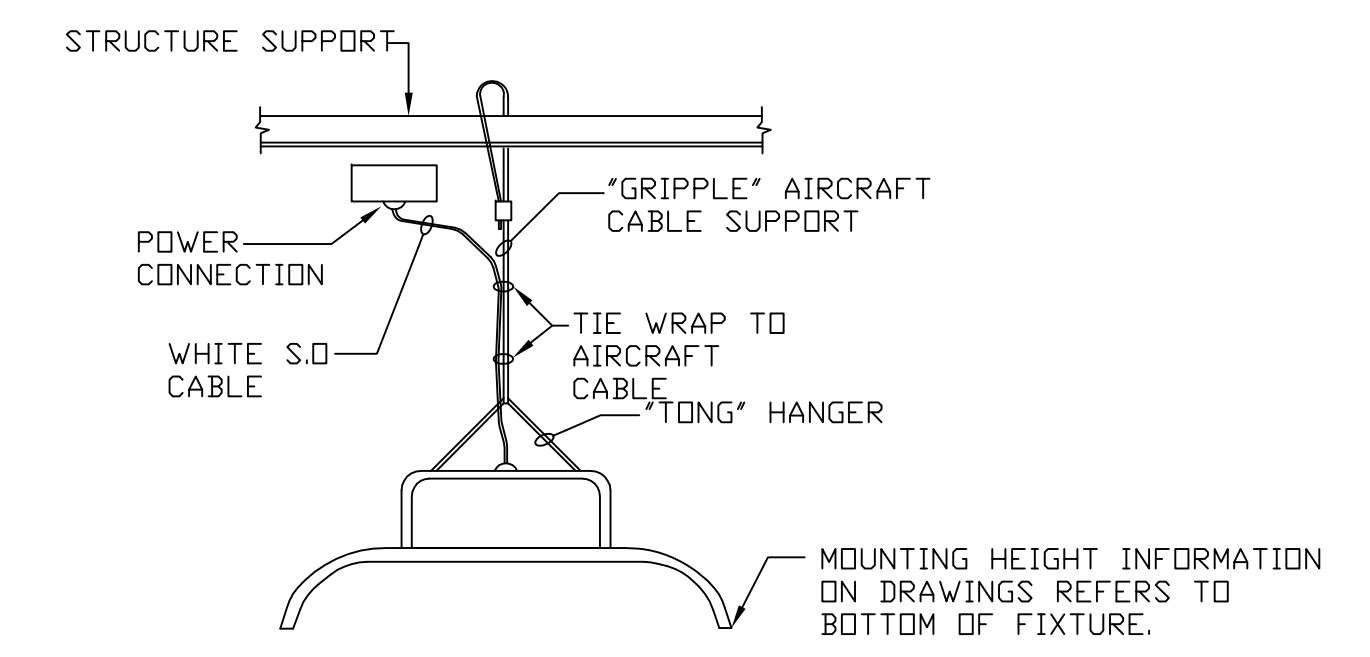
NOTES:

- ELECTRICAL CONTRACTOR SHALL VERIFY EXACT WIRING WITH MANUFACTURER'S WIRING DIAGRAMS PRIOR TO INSTALLATION.
- ALL DEVICES TO BE FIELD TESTED WITH WRITTEN CERTIFICATION OF SYSTEM. PERFORM ALL TESTS IN THE PRESENCE OF THE AUTHORITY HAVING JURISDICTION.
- PROVIDE CONNECTION TO REMOTE SUPERVISION AS DIRECTED FOR SUPERVISION OF SYSTEM IN COMPLIANCE WITH LOCAL AUTHORITY AND OWNER. PROVIDE ALL INTERFACE REQUIRED TO INITIATE REMOTE SUPERVISION. MONITORING SERVICE WILL, WHICH SHALL BE A U.L. LISTED CENTRAL STATION. BE PROVIDED BY THE OWNER.
- FLOW SWITCH SHALL BE PROVIDED BY THE FIRE PROTECTION CONTRACTOR AND BE WIRED BY THE E.C.
- TAMPER SWITCH WILL BE FURNISHED WITH SHUT-OFF VALVE BY THE FIRE PROTECTION CONTRACTOR AND BE WIRED BY THE E.C.
- E.C. TO WIRE FROM AUXILIARY CONTACTS IN DUCT SMOKE DETECTORS TO FIRE ALARM PANEL FOR TROUBLE ONLY. DUCT DETECTORS FURNISHED BY MECHANICAL CONTRACTOR WITH UNIT AND INSTALLED BY MECHANICAL CONTRACTOR WIRED TO FACP BY ELECTRICAL CONTRACTOR.
- WALL MOUNTED INDICATING DEVICE SHALL BE COMBINATION HORN/STROBE WITH FIELD ADJUSTABLE STROBE SETTING FROM 15 cd TO 115 cd. CEILING MOUNTED DEVICES SHALL BE 115/150 CANDELA.
- FIRE ALARM PANEL SHALL BE SOLID STATE, PANEL WITH GLASS "B" BELL CIRCUIT, ALARM AND TROUBLE INDICATION, 24 HOUR BATTERY BACKUP AND PANEL STATUS INDICATION LIGHTS.
- SYSTEM SHALL BE SUPPLIED BY ONE MFR. THE ENTIRE SYSTEM SHALL COMPLY WITH ALL APPLICABLE CODES AND LISTINGS, INCLUDING THE NFPA, 72, U.L., FM AND THE STATE AND LOCAL FIRE MARSHALL.
- RISER DIAGRAM FOR REFERENCE ONLY. CONTRACTOR SHALL INSTALL FROM APPROVED DRAWING FROM OWNER'S FIRE ALARM PROVIDER.

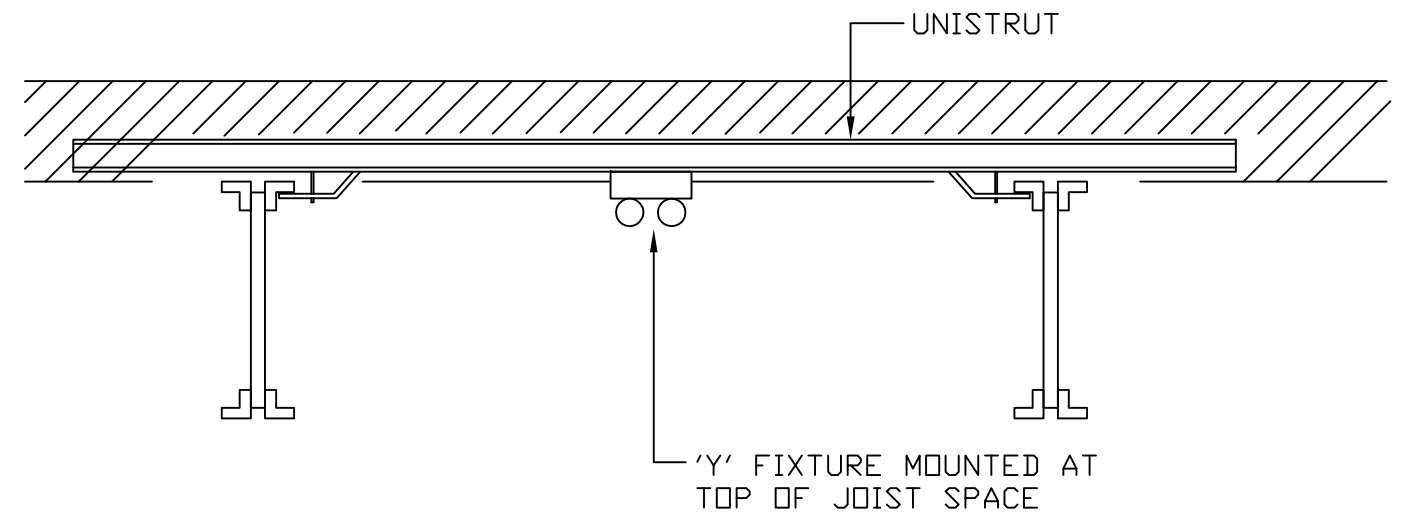


GENERAL NOTES:

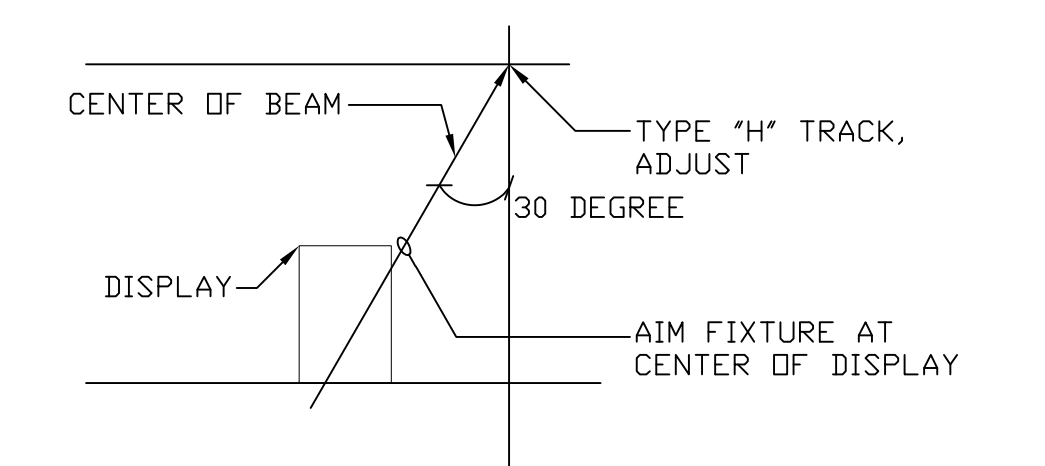
- CIRCUITS UPS-A NORMALLY OFF, ONLY ON WHEN POWER FAILURE.
- CIRCUITS UPS-B NORMALLY ON AT ALL TIMES, BATTERY BACKUP WHEN POWER FAILURE.
- ALL UPS CONDUIT WIRE SHALL BE SEPARATE FROM BUILDING WIRING IN COMPLIANCE WITH NEC ARTICLE 700.
- "UPS" EMERGENCY POWER SUPPLY SYSTEM IS BY EDC VENDOR.
- 5 KVA/KW, 277/277, EMERGENCY AC POWER SYSTEM/LEAD CALCIUM INTERRUPTIBLE 30 DAY BATTERY EXERCISON, VARIABLE TIME DELAY, OUTPUT WITH MANUAL BYPASS.



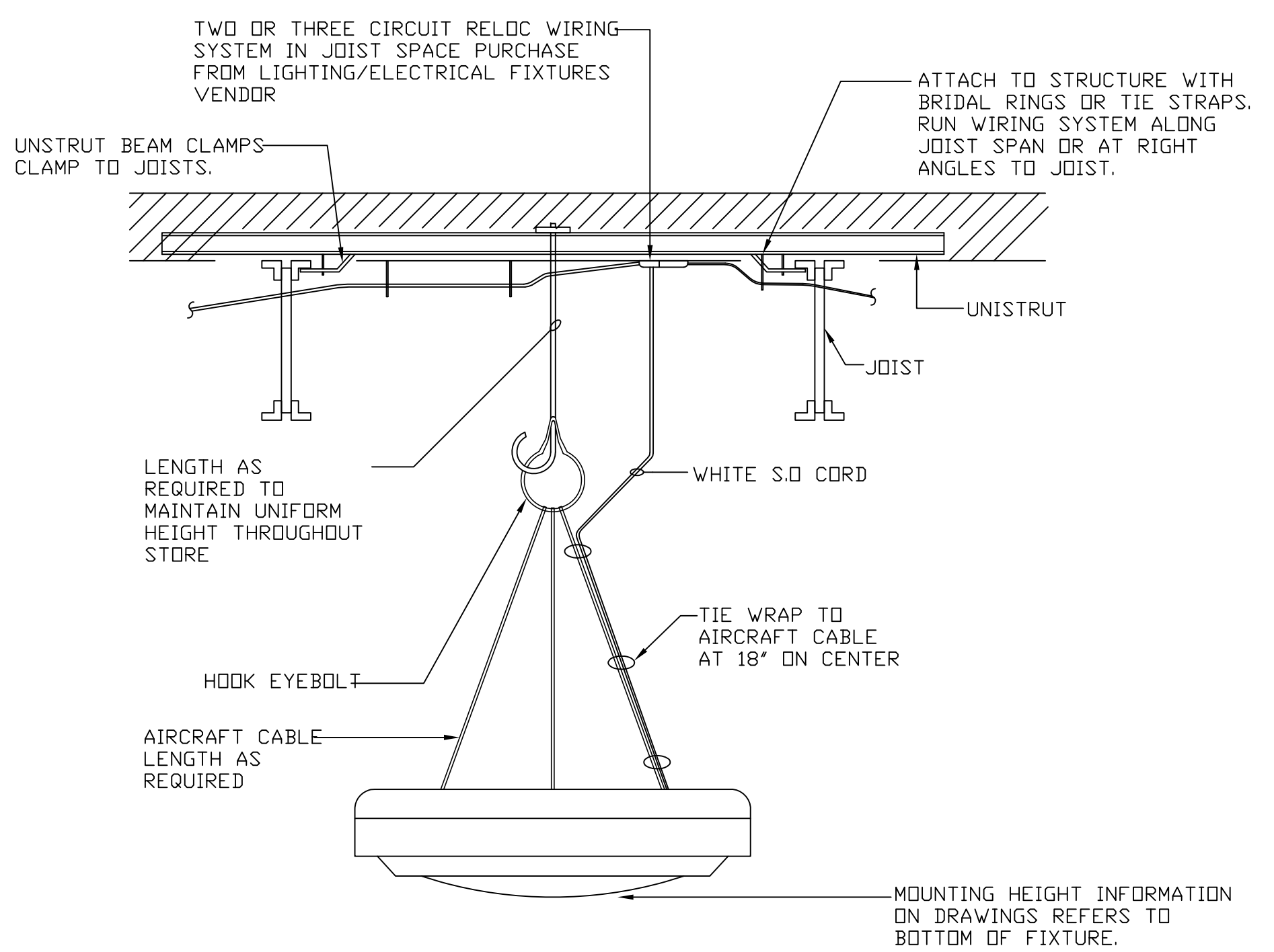
2 TYPE 'G8,G4' MOUNTING DETAIL
SCALE: NONE



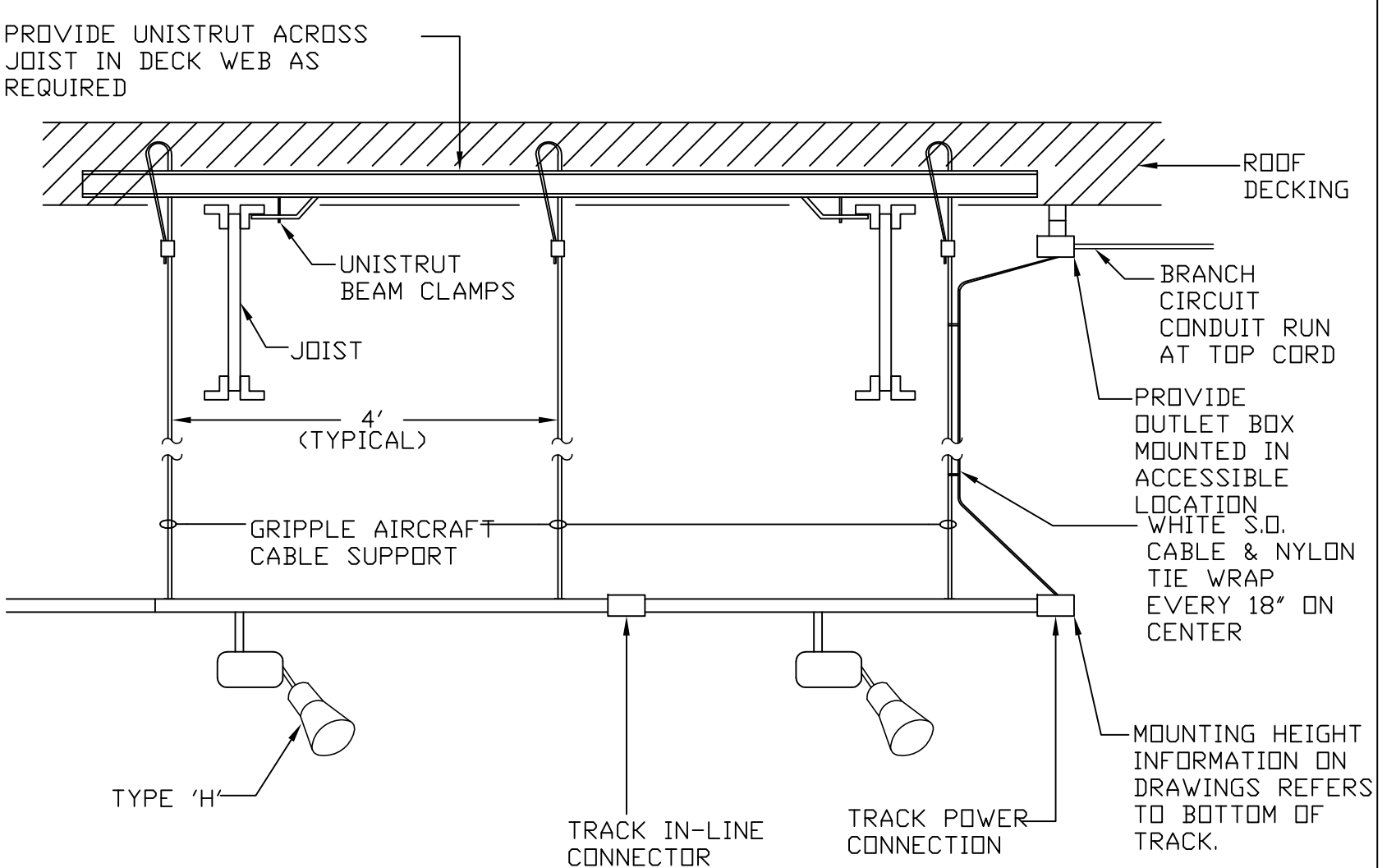
3 TYPE 'Y' MOUNTING DETAIL
SCALE: NONE



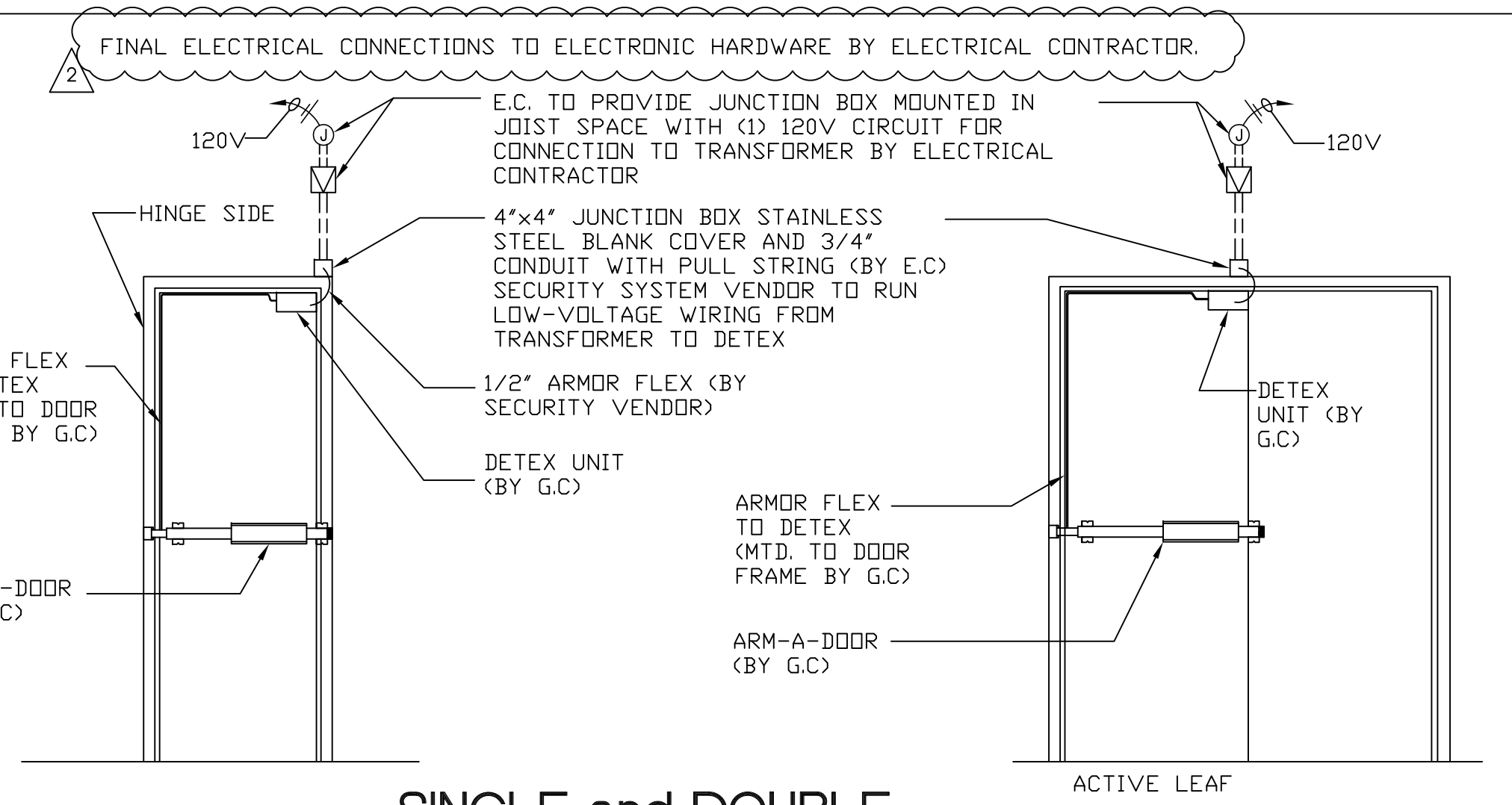
4 TRACK HEAD AIMING DETAIL
SCALE: NONE



5 TYPE 'B' MOUNTING DETAIL
SCALE: NONE



7 TYPICAL TRACK MOUNTING DETAIL
SCALE: NONE



8 SINGLE and DOUBLE DOOR SECURITY DETAILS
SCALE: NONE

ISSUED / REVISED	DATE
BID/PERMIT ISSUE	04-01-08
REVISION 1	06-18-08
REVISION 2	08-04-08

TYPE OF DRAWING SET
REVISION 2 ISSUE

ELECTRICAL DETAILS