

Project No.:	59.20.08
Drawn By:	RST
Checked By:	DGC
Issued Date:	01.12.09
Revision	No. Date
Tenant revisions	▲ 02.26.09

Material herein is for use by authorized contractors, bidders and subcontractors in connection with this project only. All dimensions in these drawings shall take precedence over scaled dimensions. Contractors shall be responsible to verify all dimensions and conditions on the job. BLUARC Design, LLC must be notified of any variations from the dimensions and conditions shown by these drawings.

Sheet Title:
OFFICE & RESTROOM PLANS, ELEVATIONS & NOTES

Sheet No.:

A2.1

RESTROOM GENERAL NOTES

PLAN AND ELEVATIONS AS DRAWN ARE TYPICAL AND ARE INTENDED TO BE DIAGRAMMATIC ONLY. SOURCE: ADA FEDERAL REG. VOL. 56, No. 144 DATED 7/26/91, RULES AND REGULATIONS. REFER TO PLAN ABOVE FOR LOCATION, CONFIGURATIONS AND OVERALL ROOM DIMENSIONS. CONTRACTOR TO DETERMINE IF (E) TOILET AND SINK CAN BE REUSED PRIOR TO DEMOLITION. INSTALL NEW TOILET AND SINK IF (E) FIXTURES DO NOT MEETS A.D.A. REGULATIONS.

WATER CLOSET - SEAT SHALL NOT BE SPRUNG TO RETURN TO LIFTED POSITION

LAVATORY - HOT WATER AND DRAIN PIPES SHALL BE INSULATED

GRAB BARS - SHALL BE 1 1/4" DIA. W/ 1 1/2" CLEARANCE TO WALL. BAR FASTENERS AND MOUNTING SUPPORT SHALL BE ABLE TO WITHSTAND 250 LBS. IN BENDING, SHEAR AND TENSION.

HC SIGNAGE - SEE SHEET A01

LAVATORY AND WATER COSET CONTROLS - SHALL BE OPERABLE WITH ONE HAND AND NOT REQUIRE TIGHT GRASPING, PINCHING, OR TWISTING OF THE WRIST. SHALL BE OPERABLE BY FORCE OF MAX. 5 LBS. AND SHALL BE LOCATED 44" A.F.F. MAX.

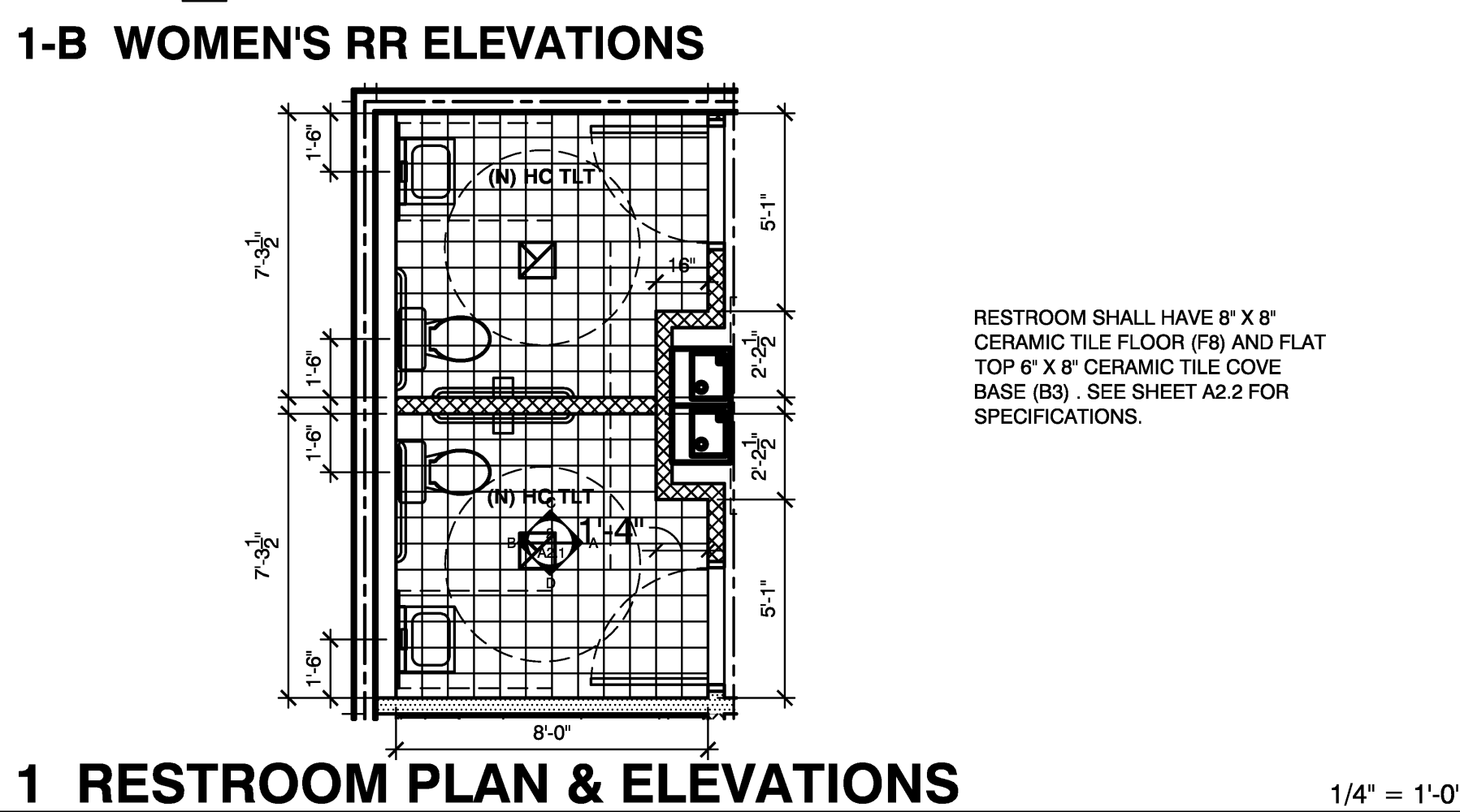
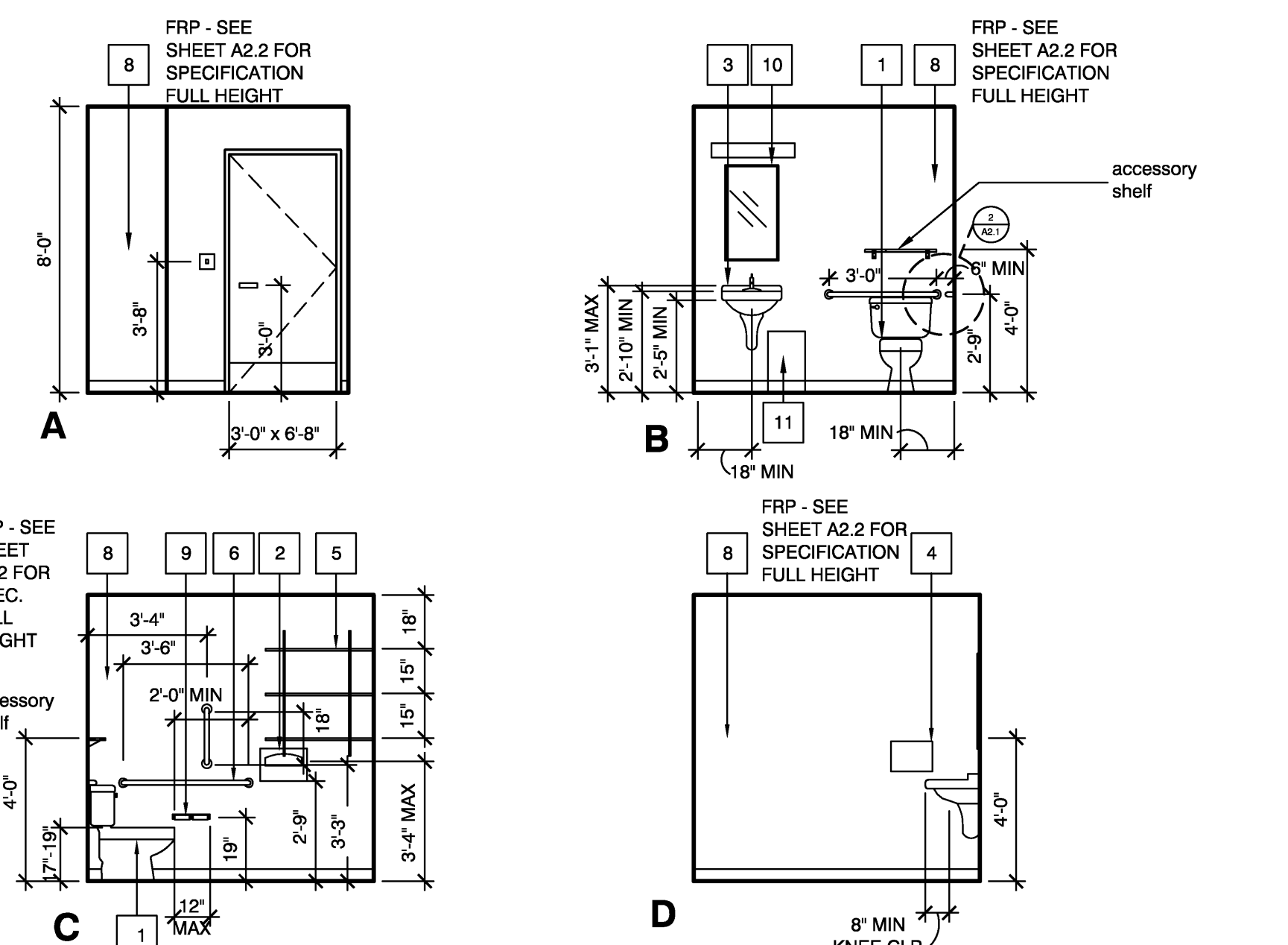
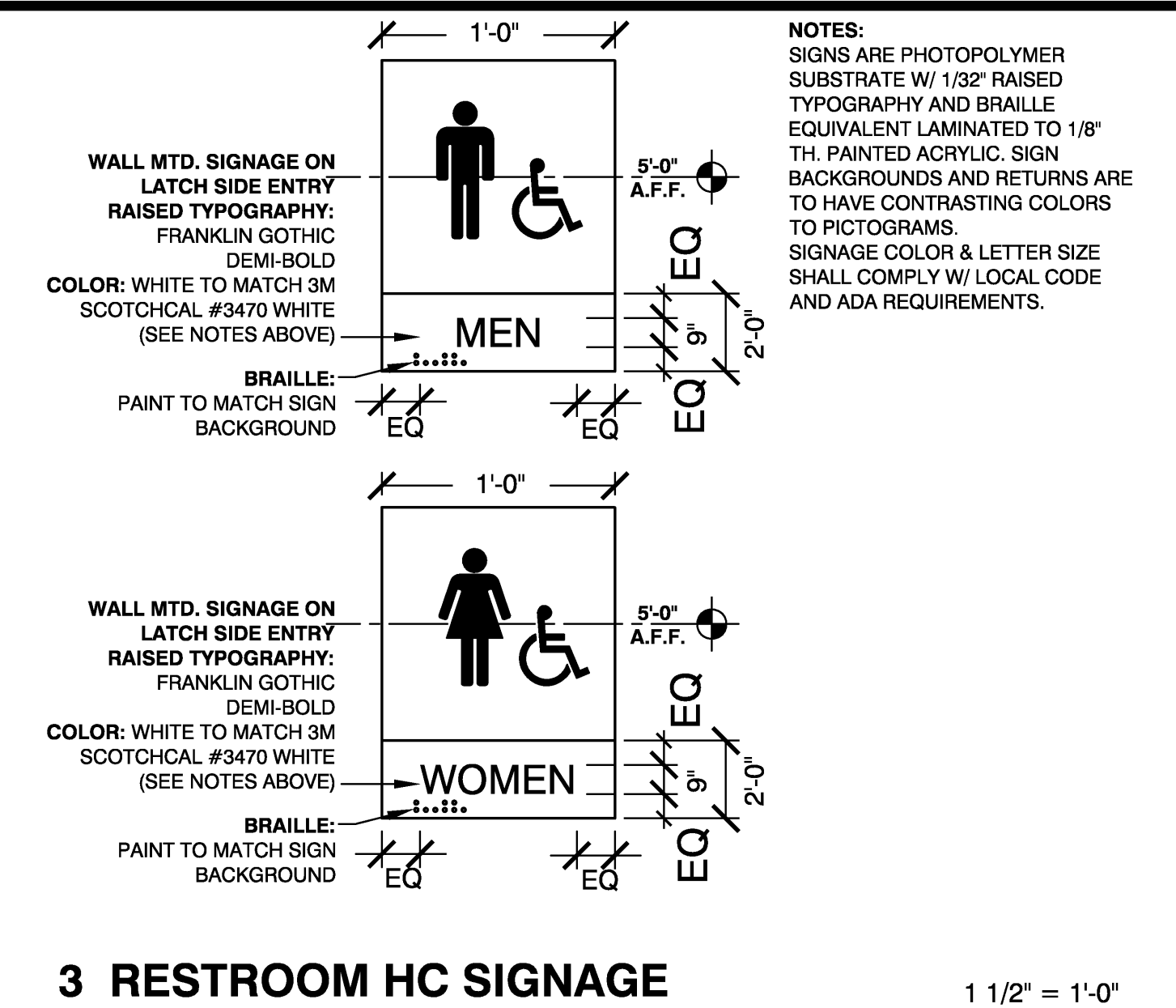
RESTROOM KEY NOTES

- | | |
|---------------------------------|--|
| 1 TOILET | 7 S.S. SWING UP GRAB BAR - GC TO PROVIDE & INSTALL BOBRICK #B-4998 |
| 2 TOILET - SEAT COVER DISPENSER | 8 FRP - SEE SHEET A2.2 FOR SPECIFICATION FULL HEIGHT |
| 3 LAVATORY | 9 TOILET PAPER DISPENSER |
| 4 ROLL PAPER TOWEL DISPENSER | 10 1'-6" w x 2'-8" h MIRROR W/ STAINLESS STEEL TRIM - PROVIDED & INSTALLED BY GC |
| 5 3'-0" SHELVING | 11 WASTE BASKET |
| 6 S.S. 36" & 42" GRAB BARS | 12 INSTA-HOT UNIT |

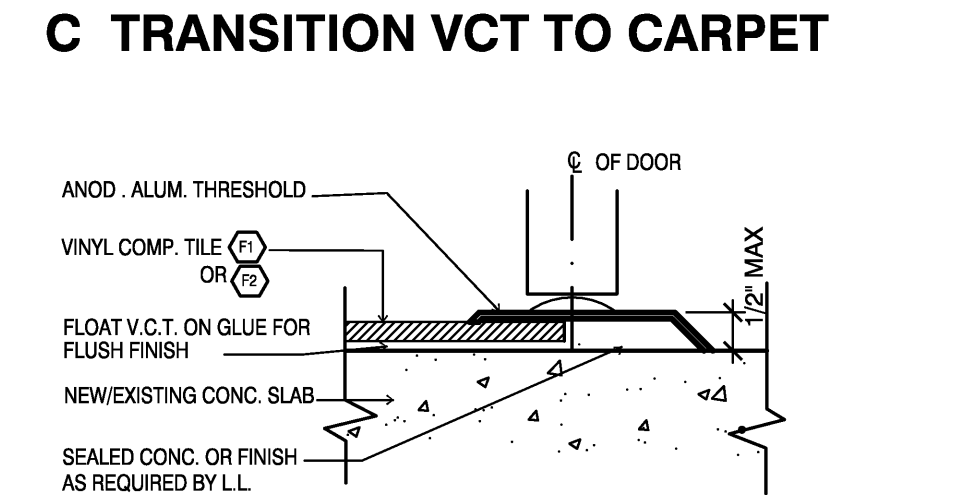
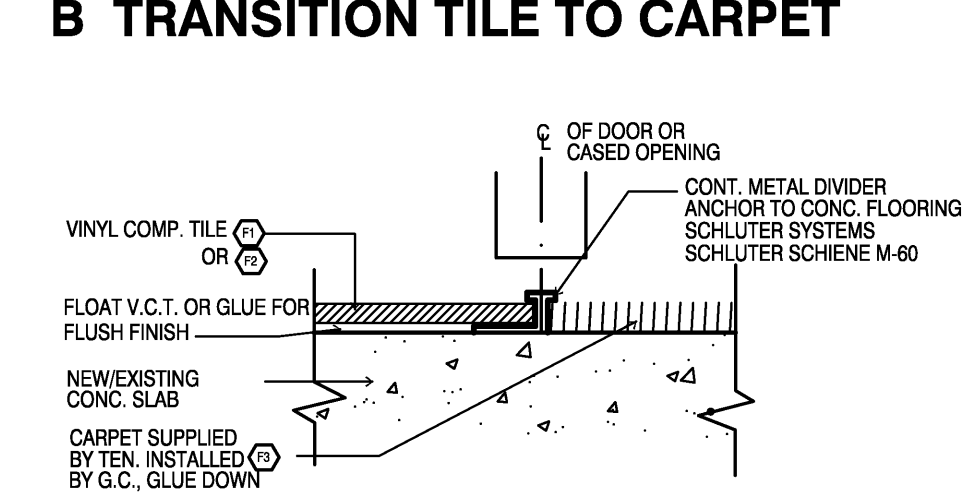
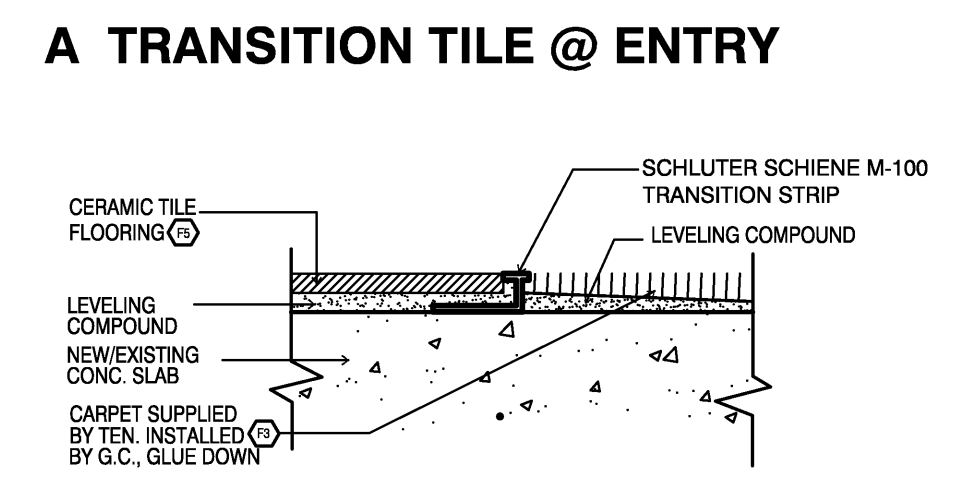
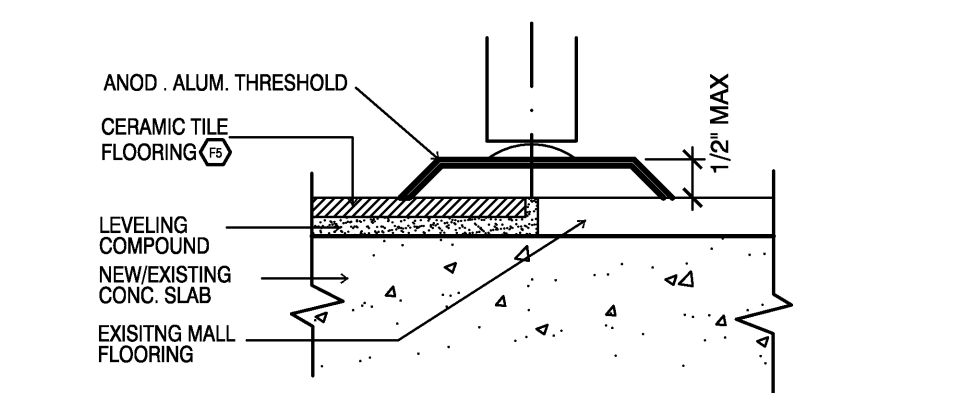
RESTROOM FIXTURE / ACCESSORIES SCHEDULE

NOTE: GC SHALL PROVIDE AND INSTALL THE FOLLOWING ACCESSORIES:

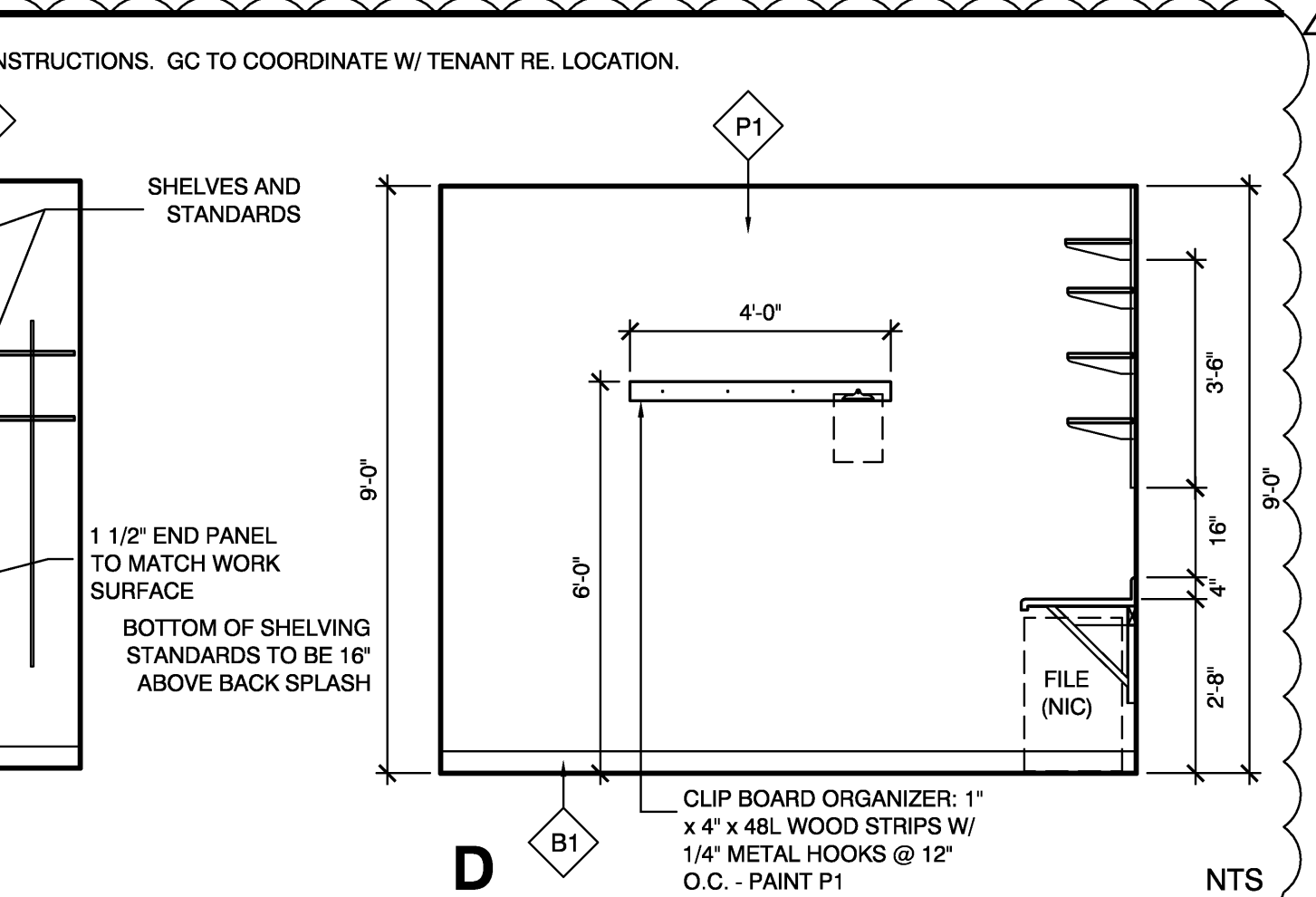
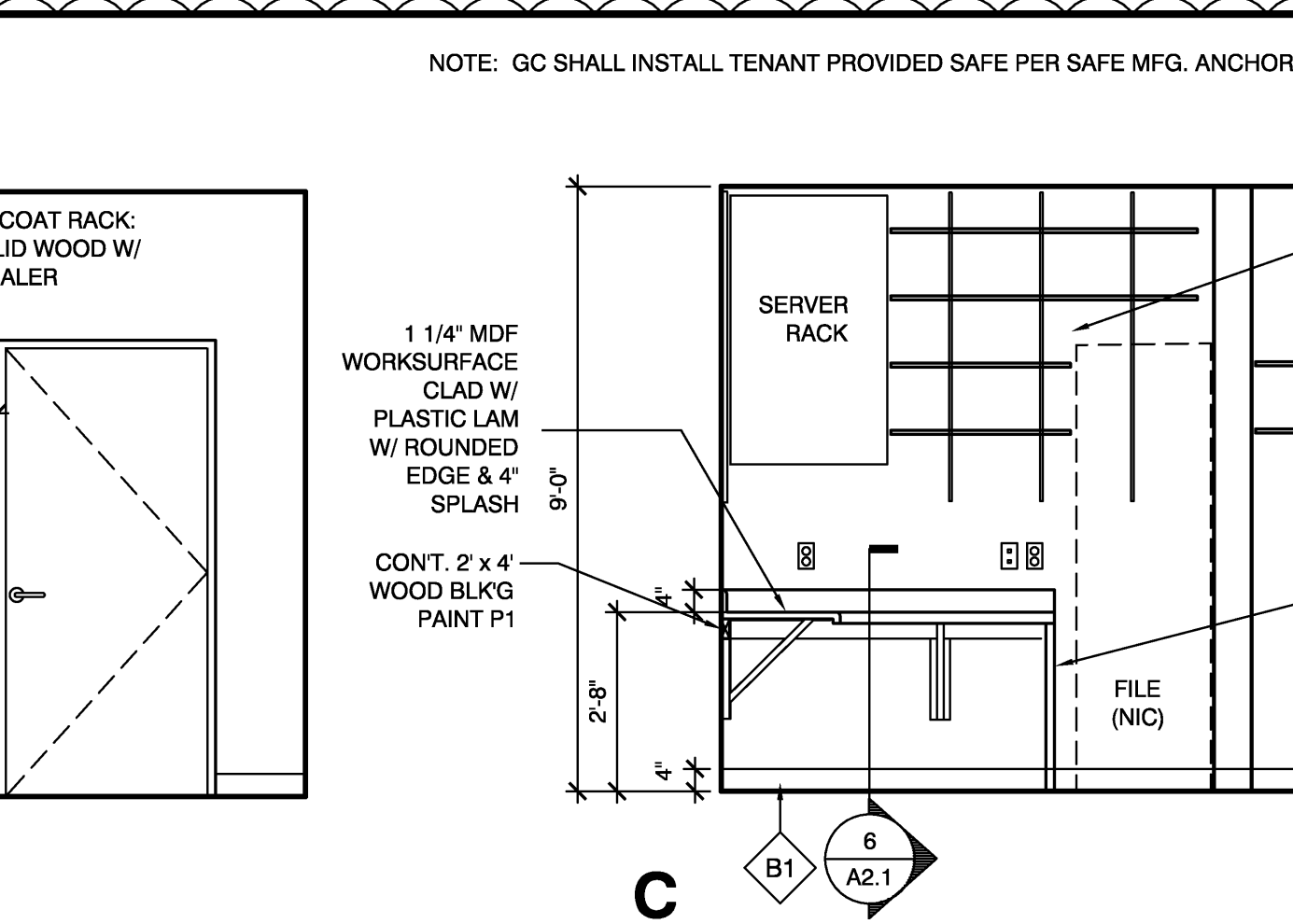
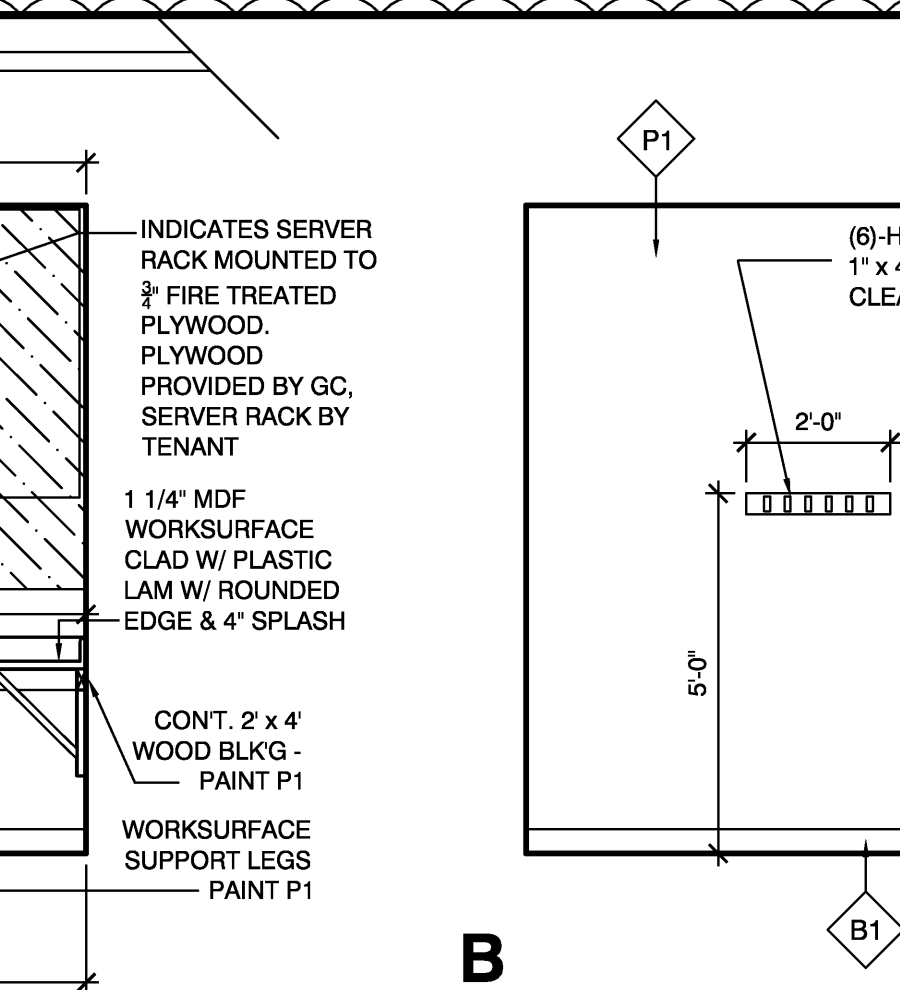
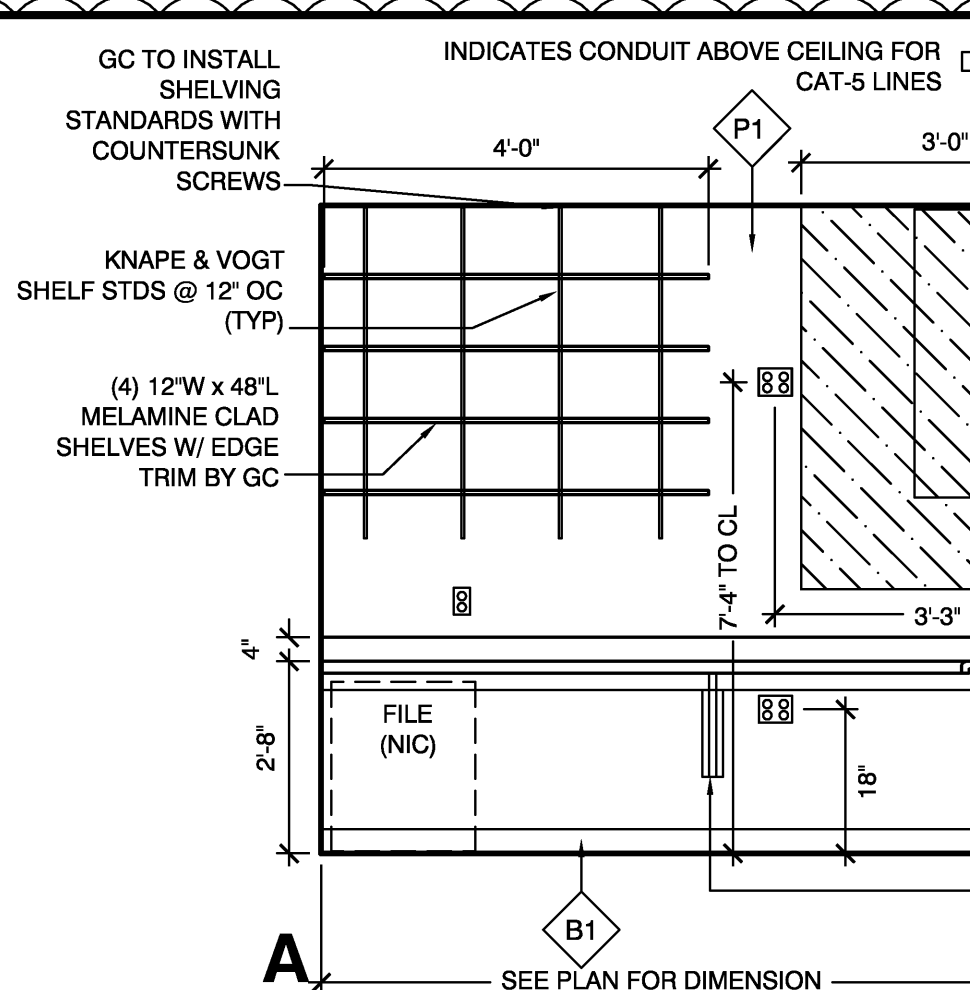
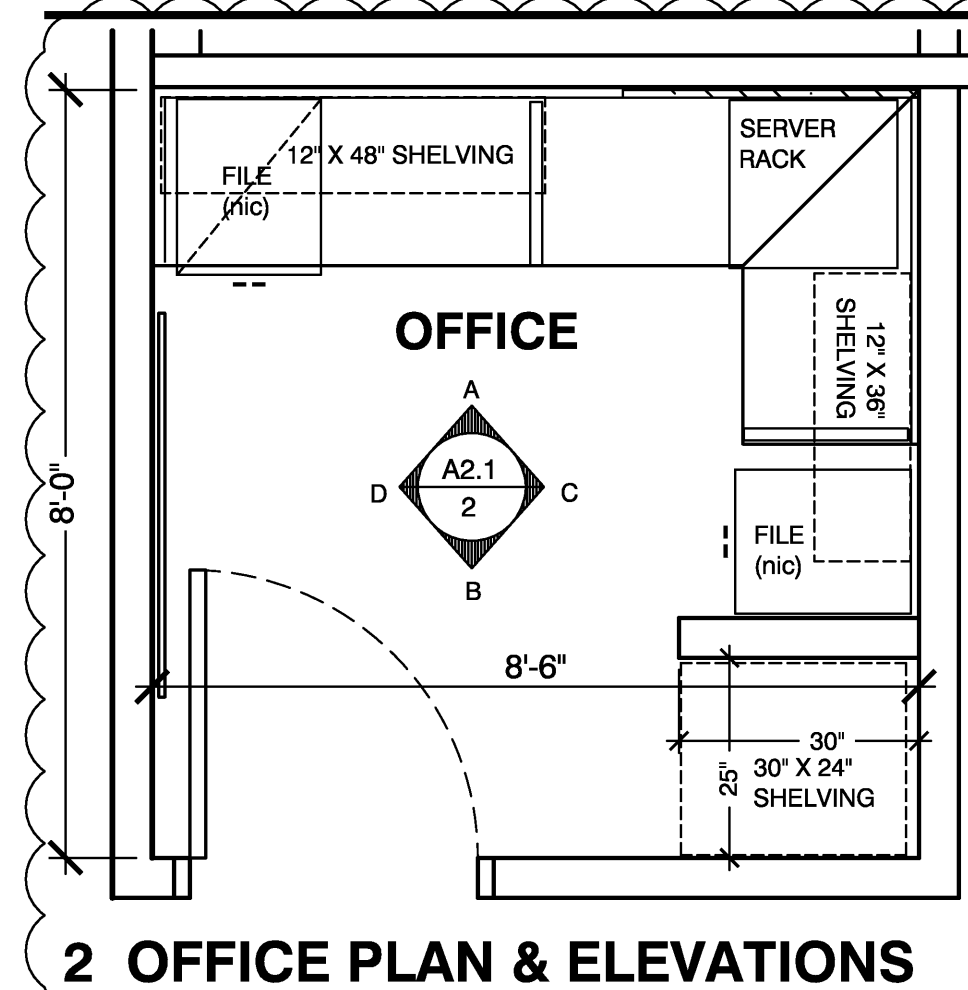
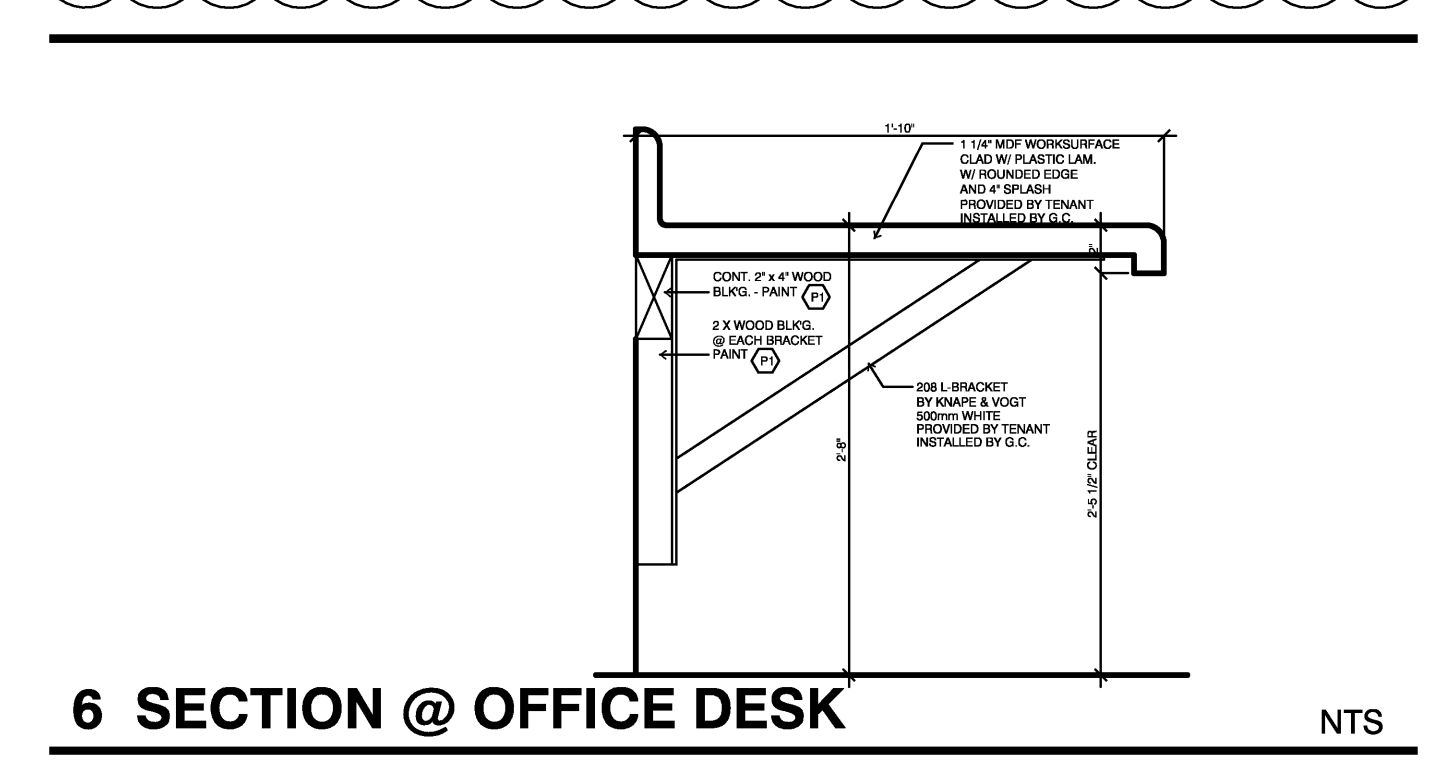
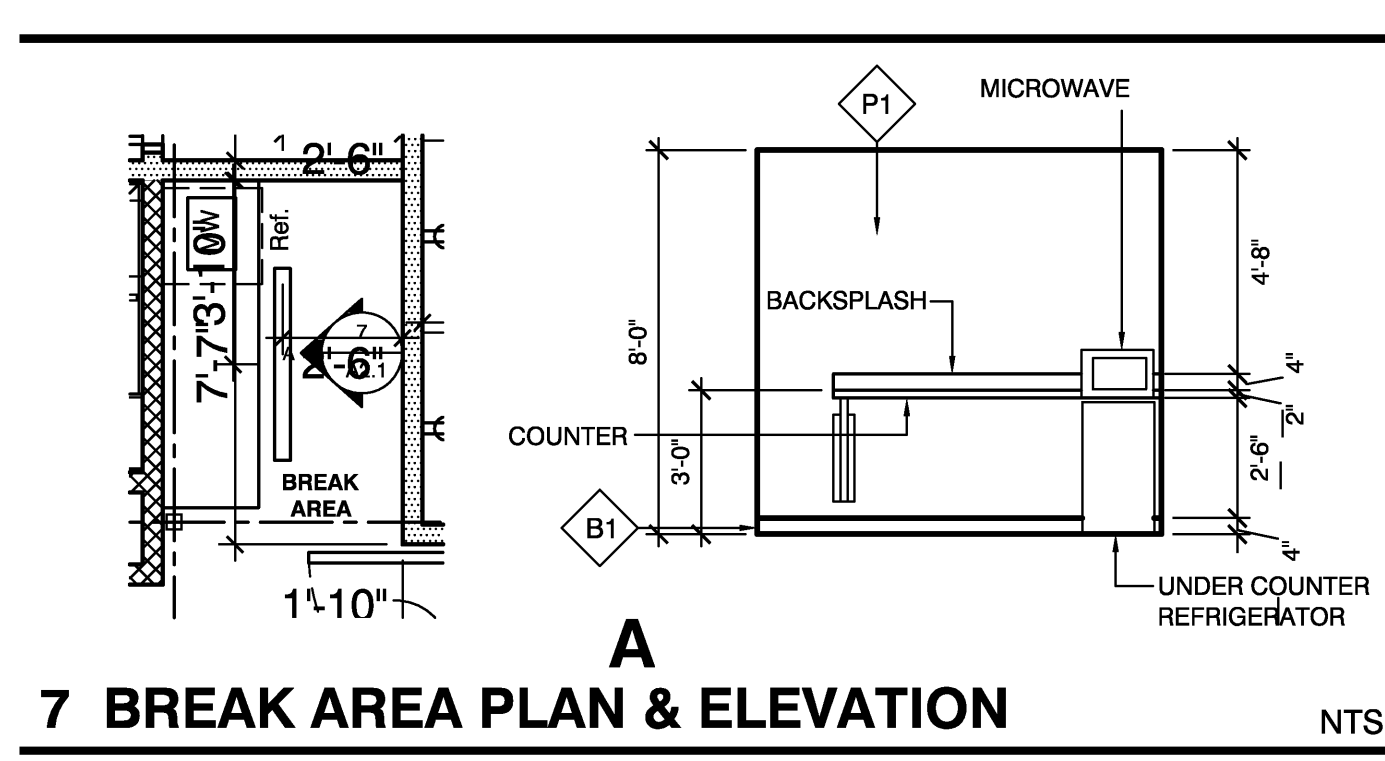
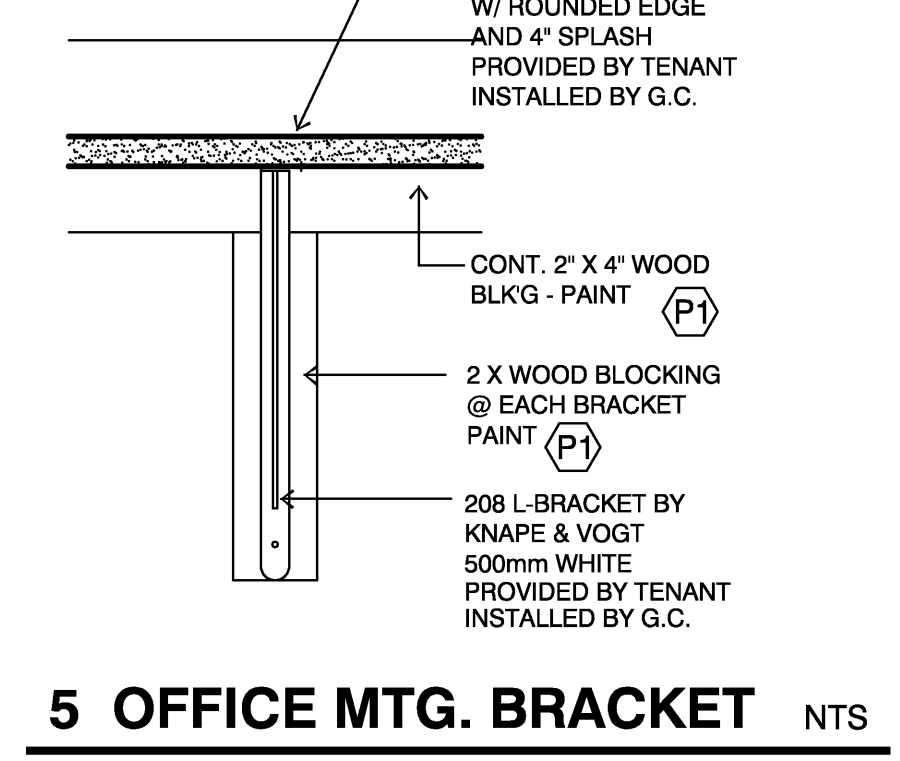
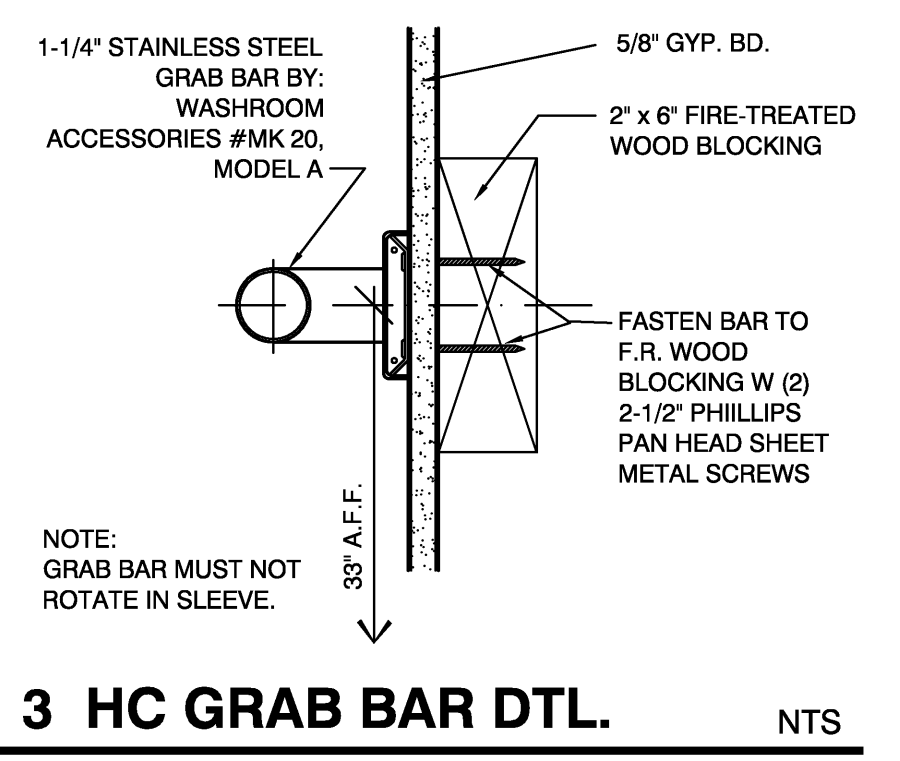
FIXTURE / ACCESSORIES	MANUFACTURER	DESCRIPTION	REMARKS
TOILET	AMERICAN STANDARD	CADET 2168.162 ELONGATED BOWL	SEE PLUMBING PLANS FOR ADDITIONAL INFO.
MIRROR	BRADLEY	#781 - 24" w x 30" h w/ CHROME "J" MOLDING ALL EDGES	MOUNT 6" ABOVE SINK
LAVATORY	AMERICAN STANDARD	MURRO W/ SHROUD / KNEE GUARD	SEE PLUMBING PLANS FOR ADDITIONAL INFO.
LAVATORY FAUCET	AMERICAN STANDARD	HERITAGE	SEE PLUMBING PLANS FOR ADDITIONAL INFO.
GRAB BARS	BOBRICK	#B-490-36" #B-490-42" CHROME FINISH	ONE EACH PER LAVATORY
PAPER TOWEL DISPENSER	BRADLEY	#250-15 SURFACE MOUNT - STAINLESS STEEL FINISH	PROVIDE BACKING AS REQ'D
STAINLESS STEEL SHELF	BRADLEY	#B-296x24 SURFACE MOUNT	GC TO INSTALL (1); PROVIDE BACKING AS REQ'D
TOILET SEAT COVER DISPENSER	BOBRICK	#B-221 STAINLESS STEEL FINISH	SURFACE MOUNTED; PROVIDE BACKING AS REQ'D
TOILET PAPER DISPENSER	BASCO	#7111 CHROME FINISH	TWO-ROLL, SURFACE MOUNTED



NOTE: MEN'S TOILET SIMILAR
1-A MEN'S RR ELEVATIONS



4 FLOOR TRANSITIONS NTS



NOTE: GC SHALL INSTALL TENANT PROVIDED SAFE PER SAFE MFG. ANCHORING INSTRUCTIONS. GC TO COORDINATE W/ TENANT RE. LOCATION.