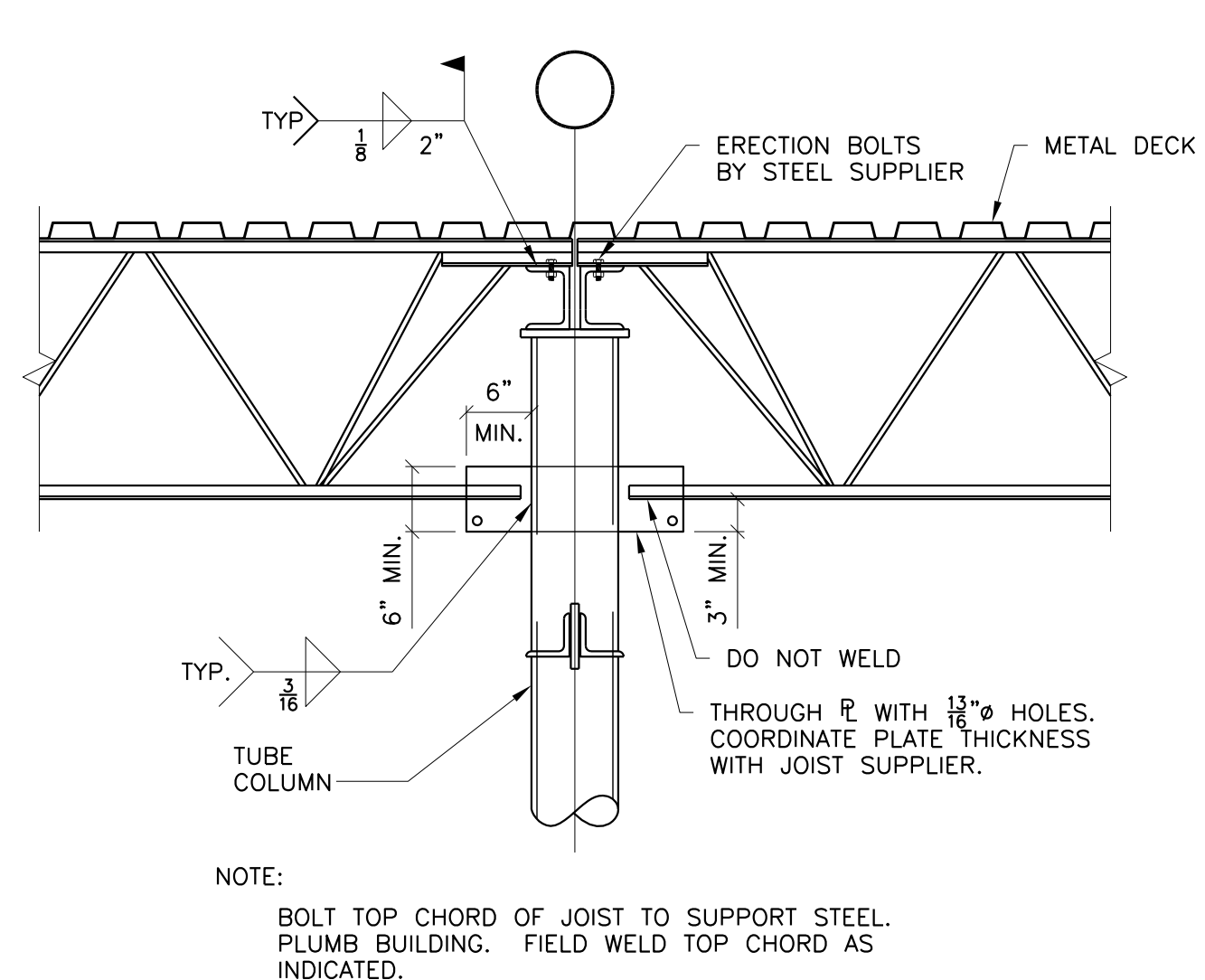
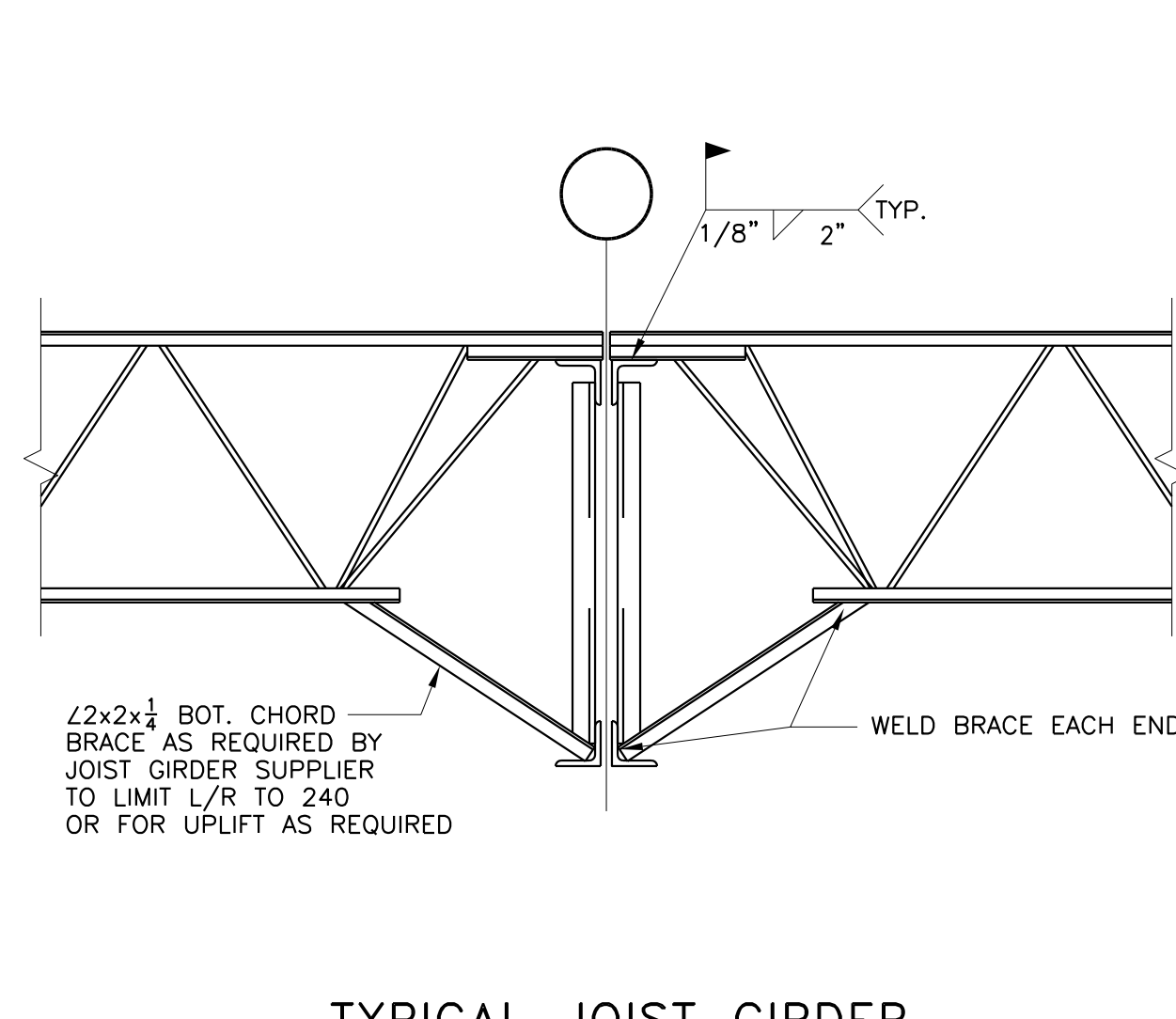


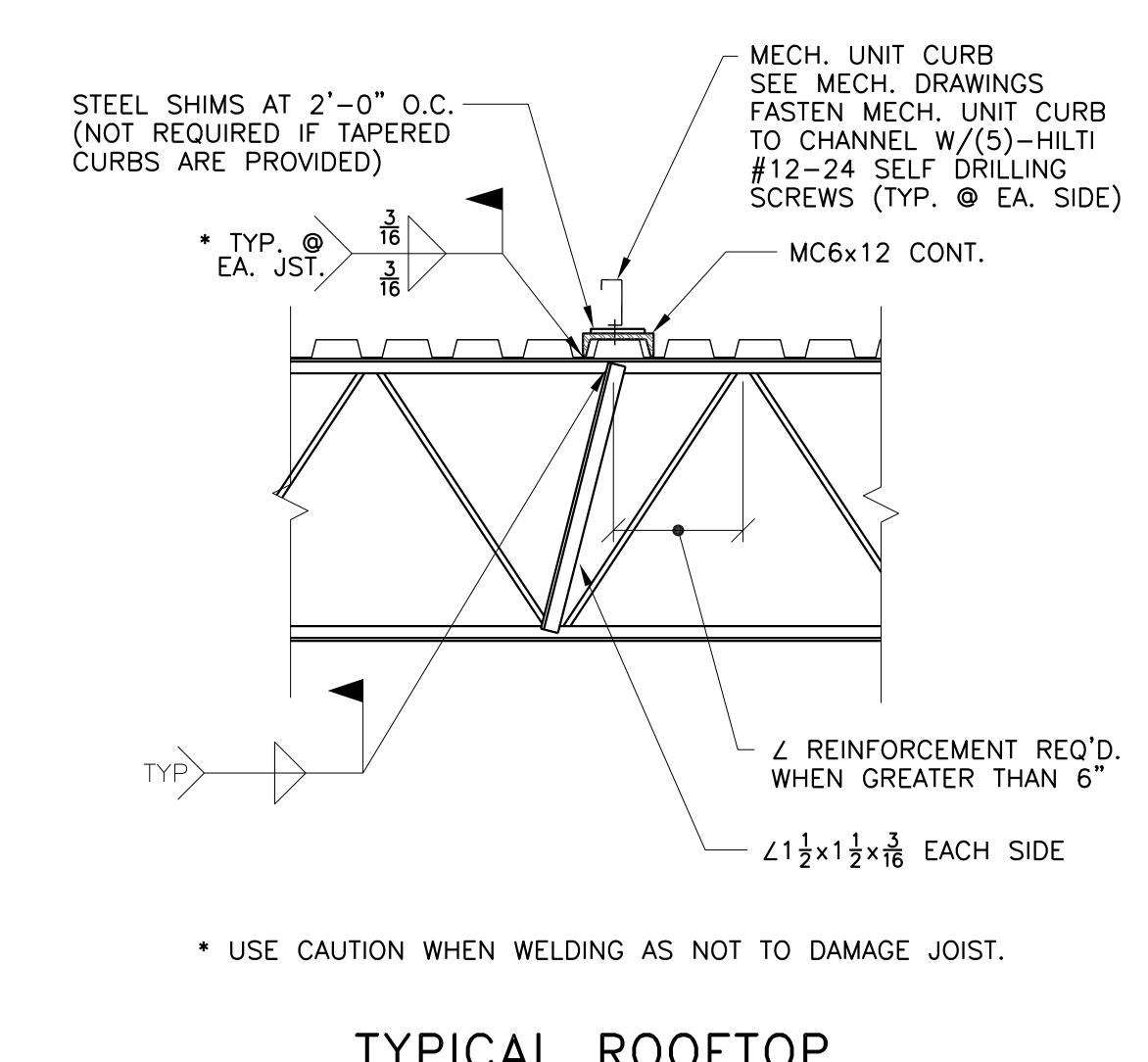
TYPICAL JOIST GIRDER TO COLUMN CONNECTION DETAIL - ROOF



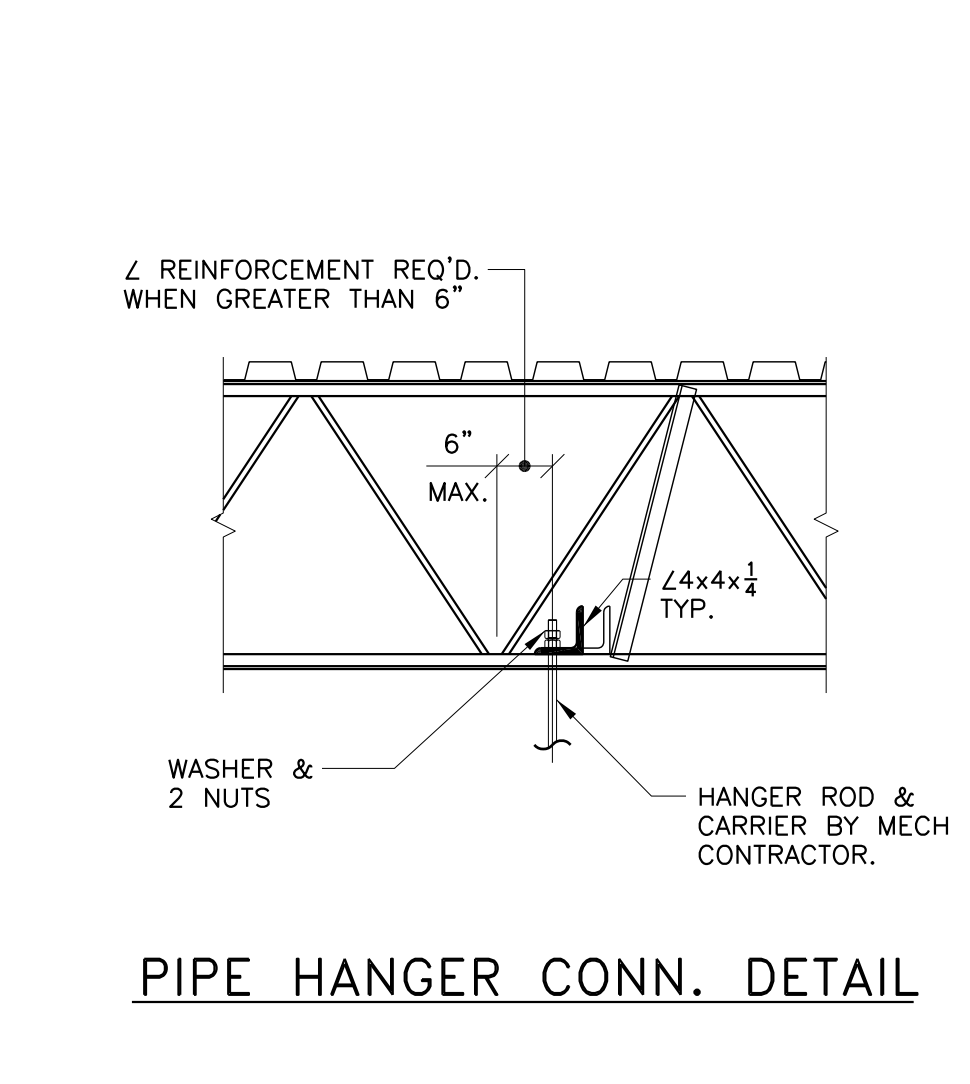
TYPICAL JOIST TO COLUMN CONNECTION DETAIL - ROOF



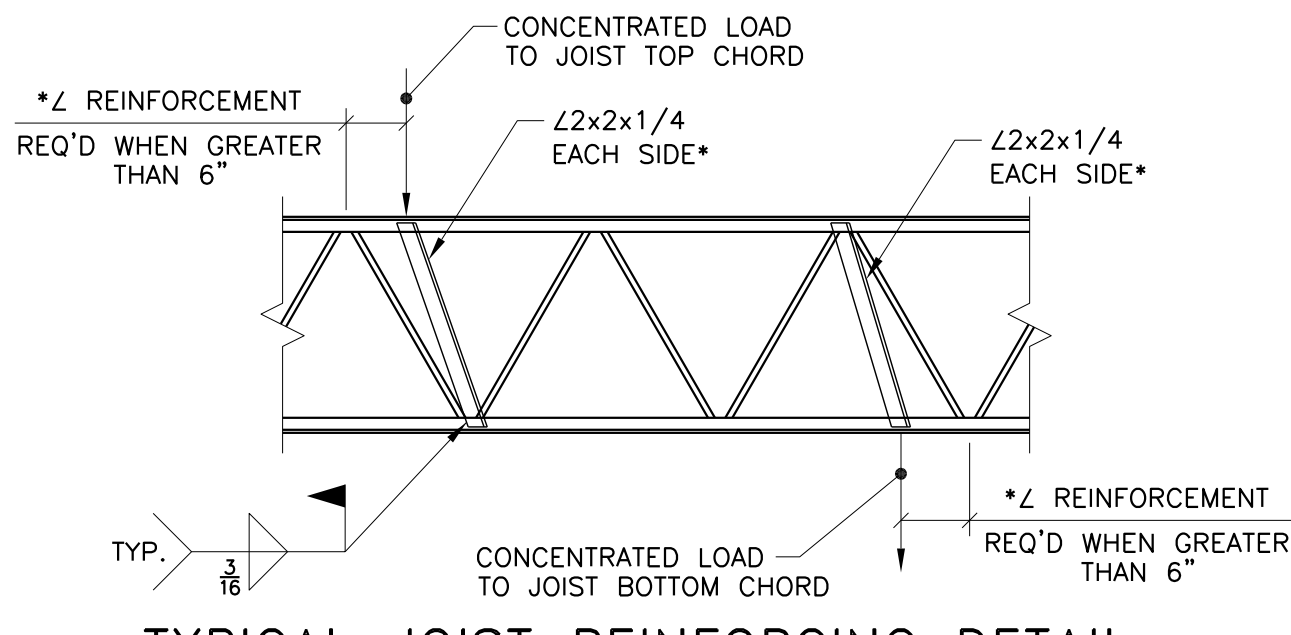
TYPICAL JOIST GIRDER BOTTOM CHORD BRACE



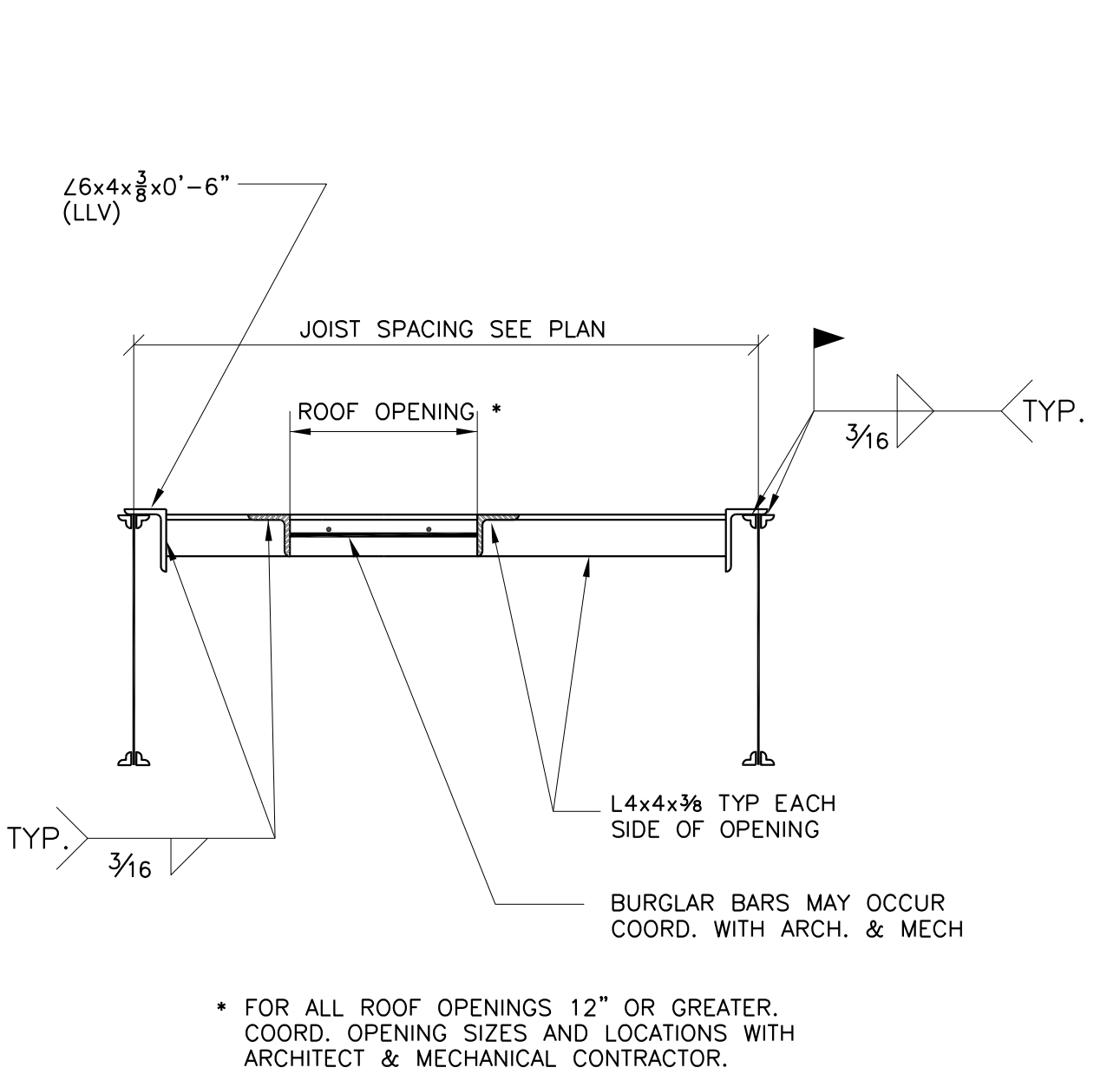
TYPICAL ROOFTOP MECHANICAL UNIT CURB SUPPORTS



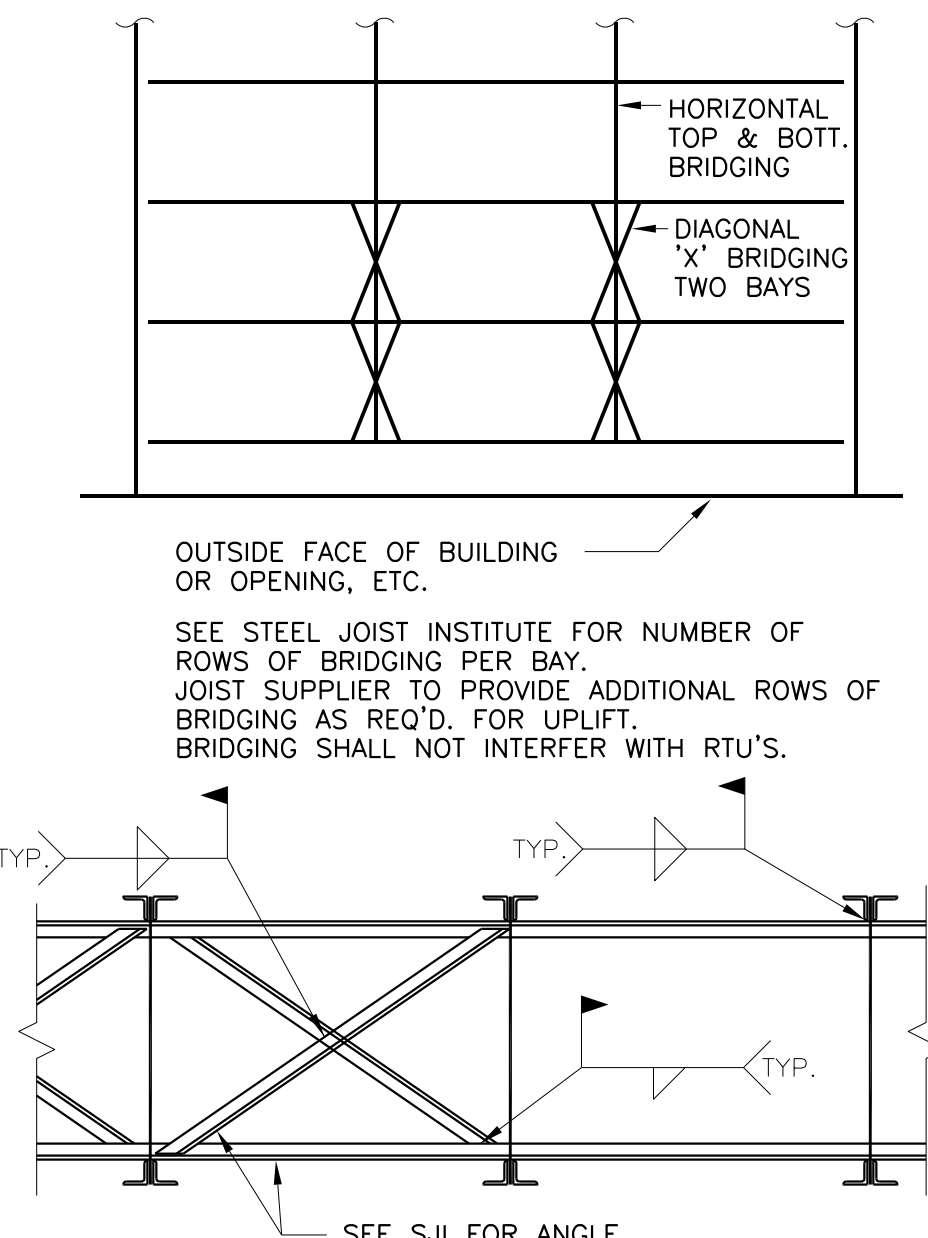
PIPE HANGER CONN. DETAIL



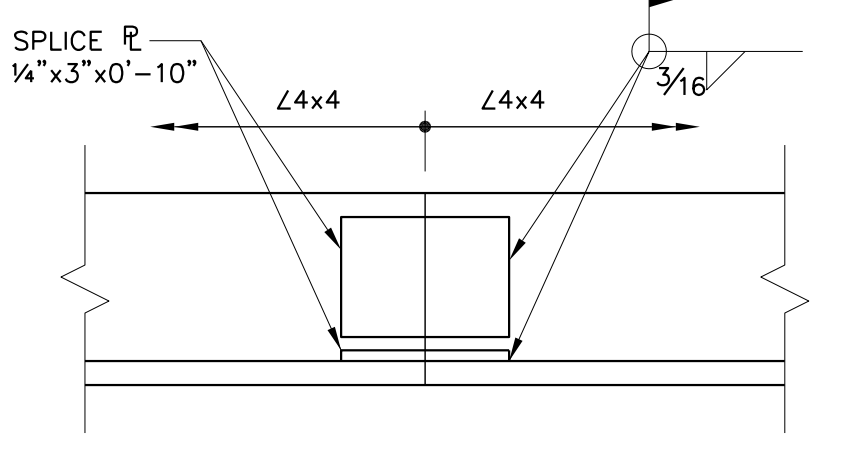
TYPICAL JOIST REINFORCING DETAIL



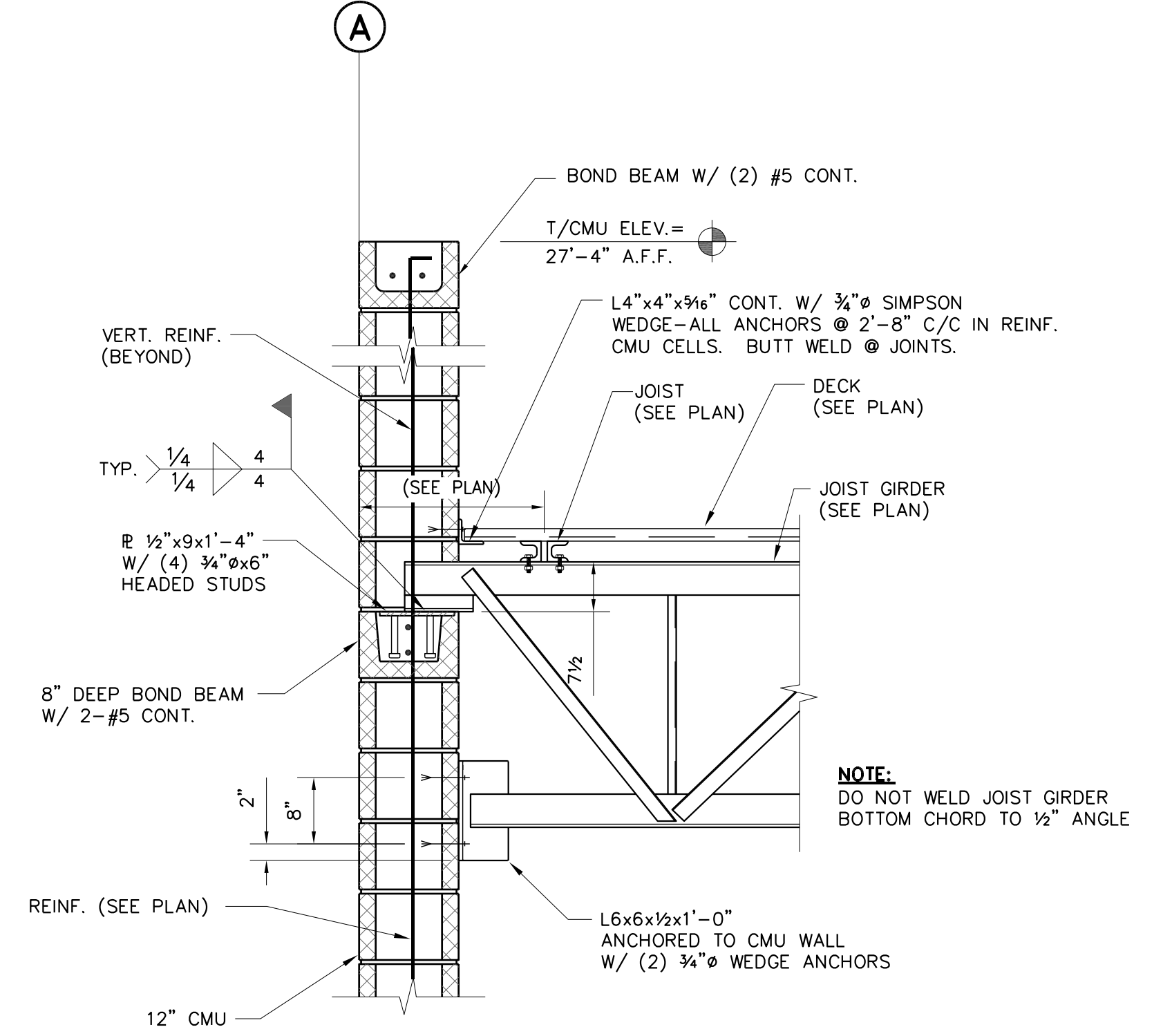
TYPICAL ROOF OPENING DETAIL



TYPICAL BRIDGING DETAILS

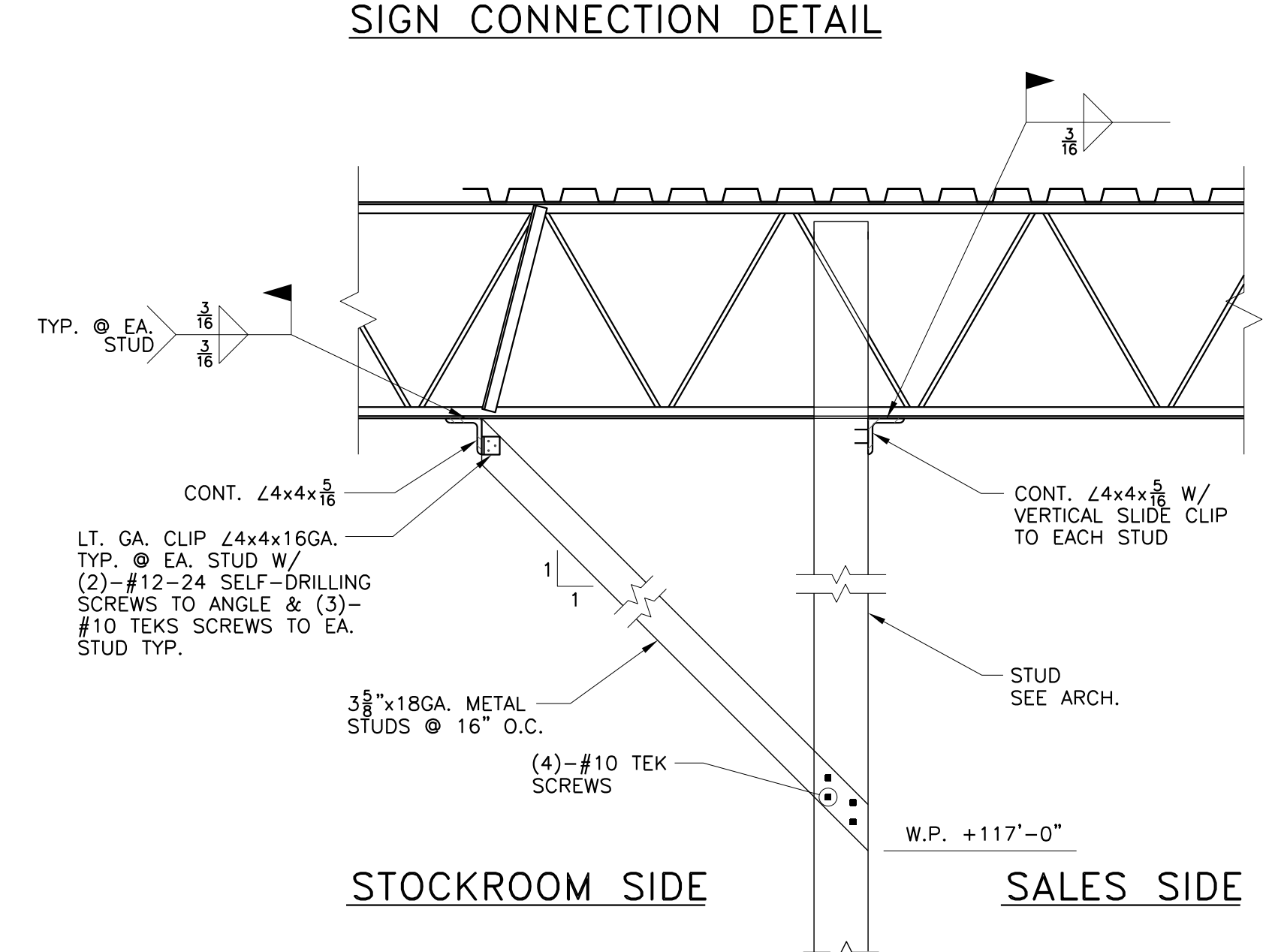


ANGLE CHORD SPLICE DETAIL

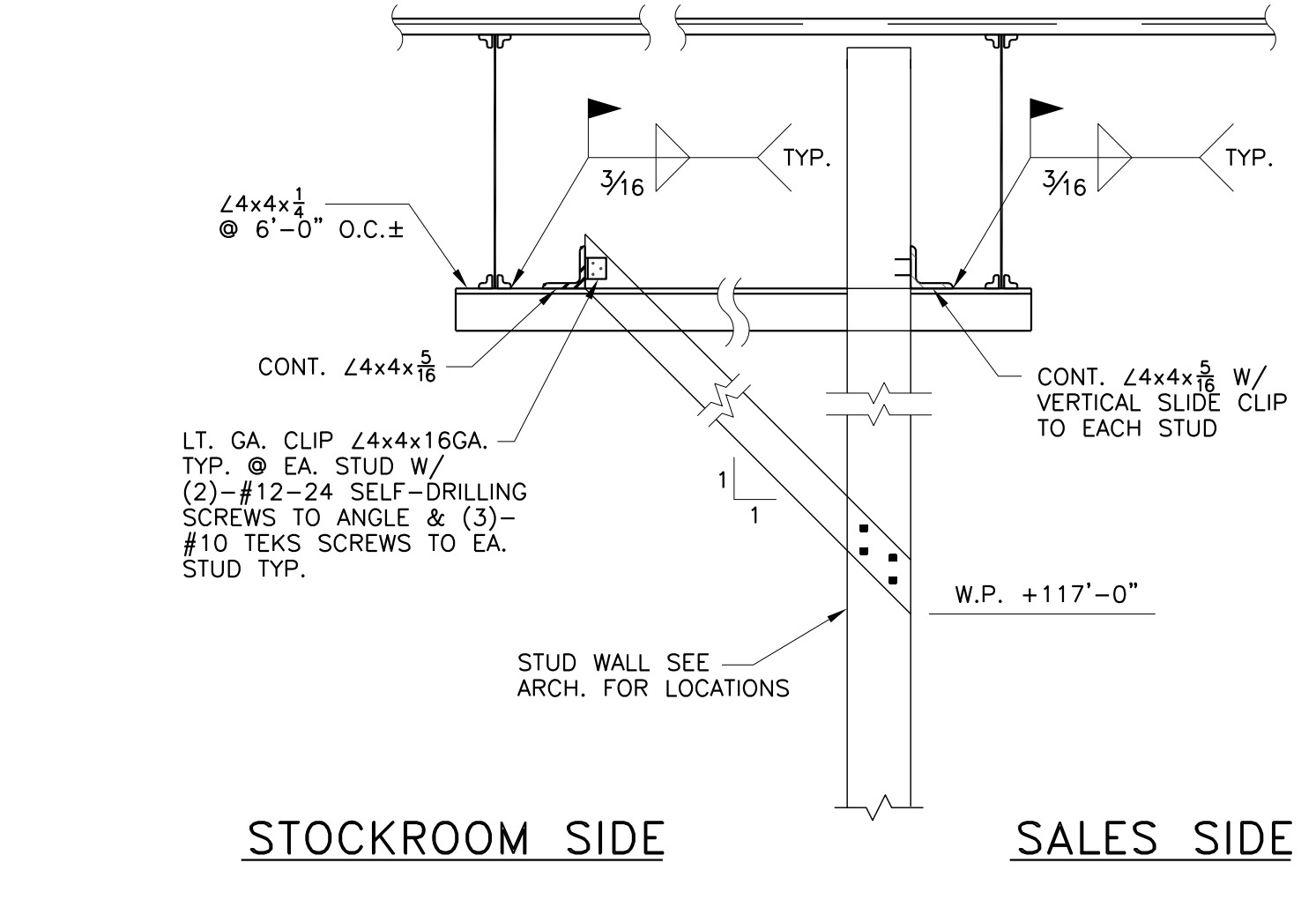


JOIST GIRDER BEARING ON CMU WALL DETAIL

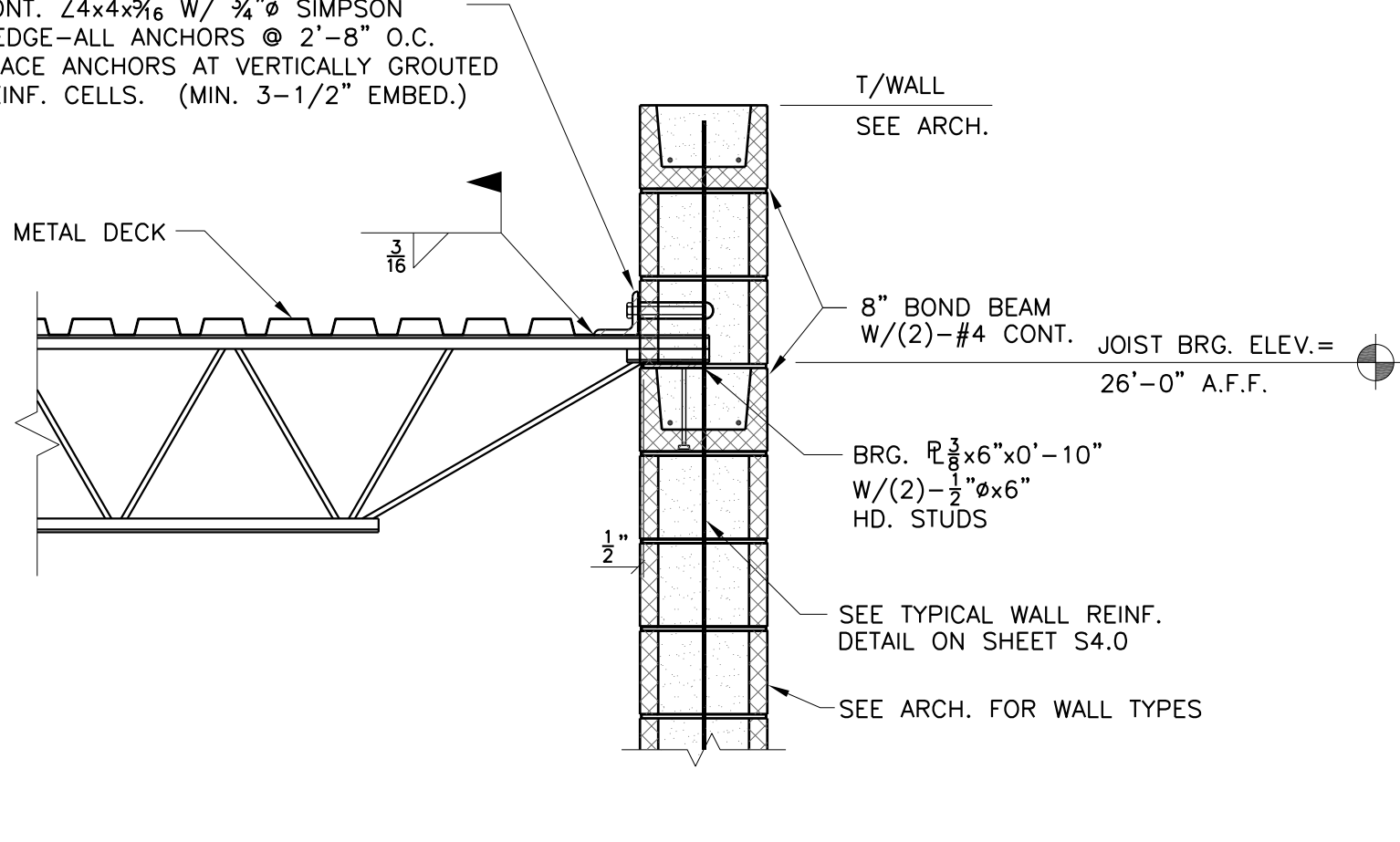
SECTION 1  
3/4"=1'-0"



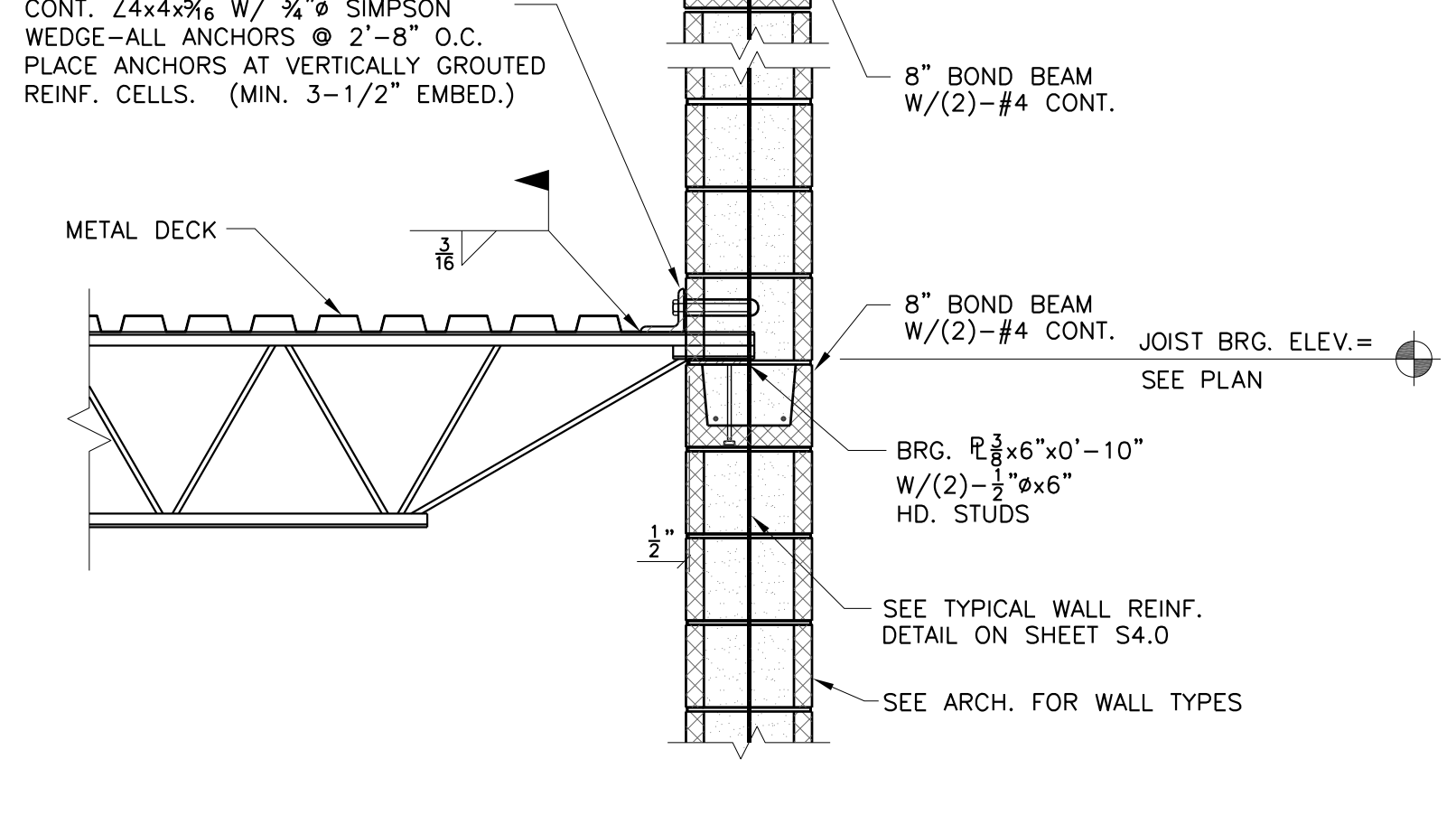
TYPICAL INTERIOR STUD WALL BRACING



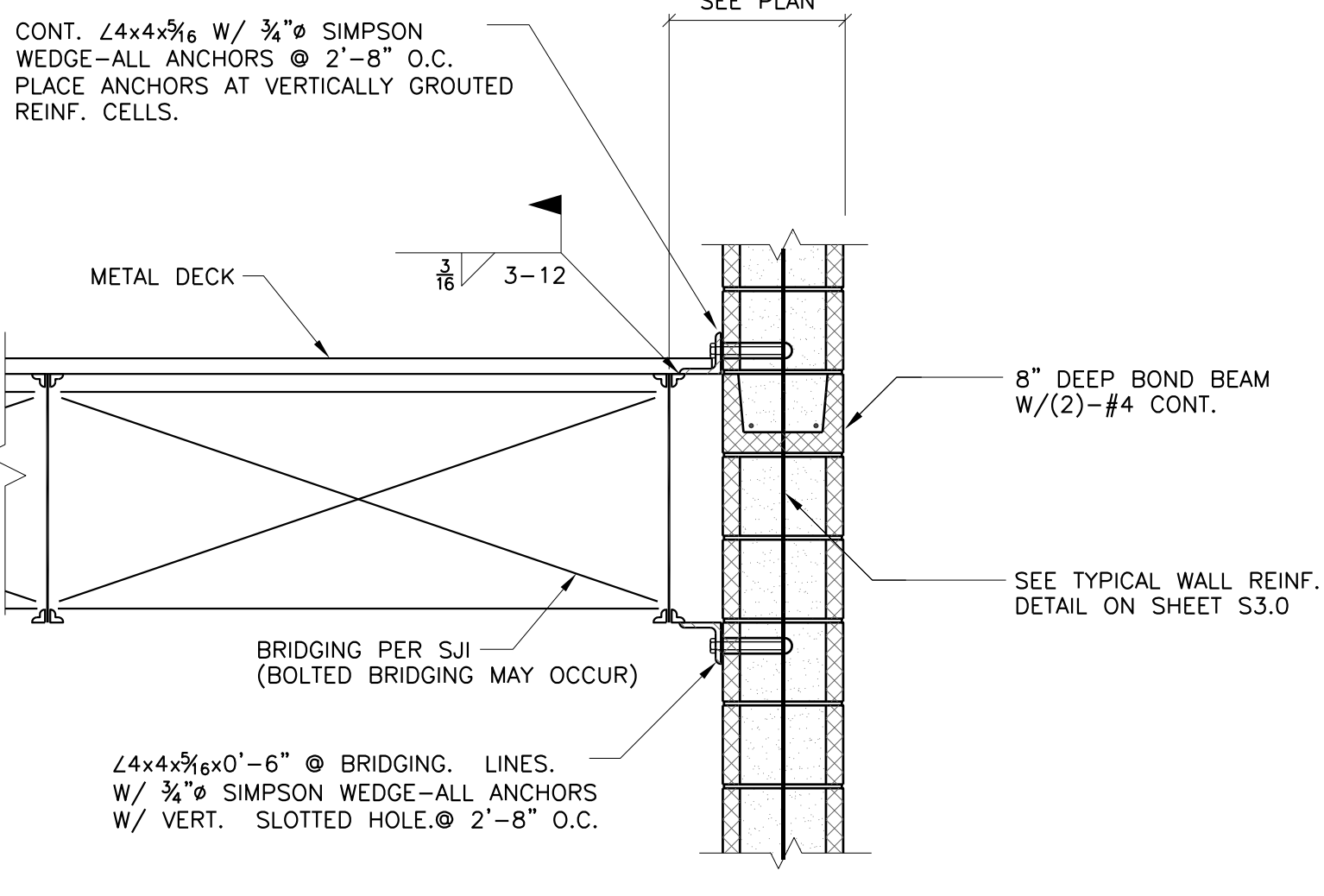
STOCKROOM SIDE SALES SIDE



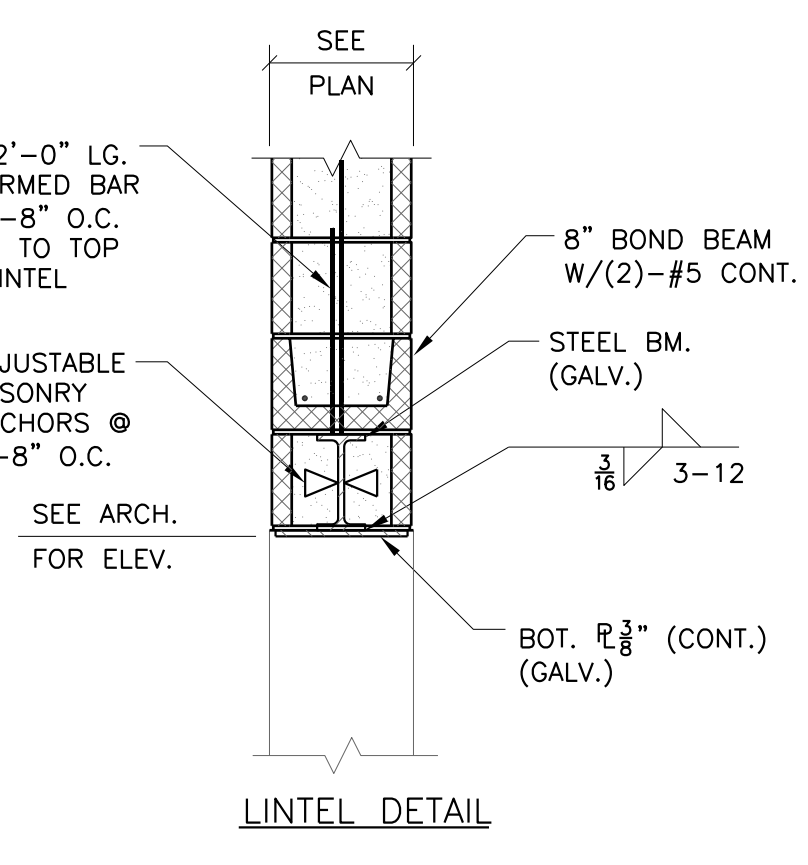
SECTION 2  
3/4"=1'-0"



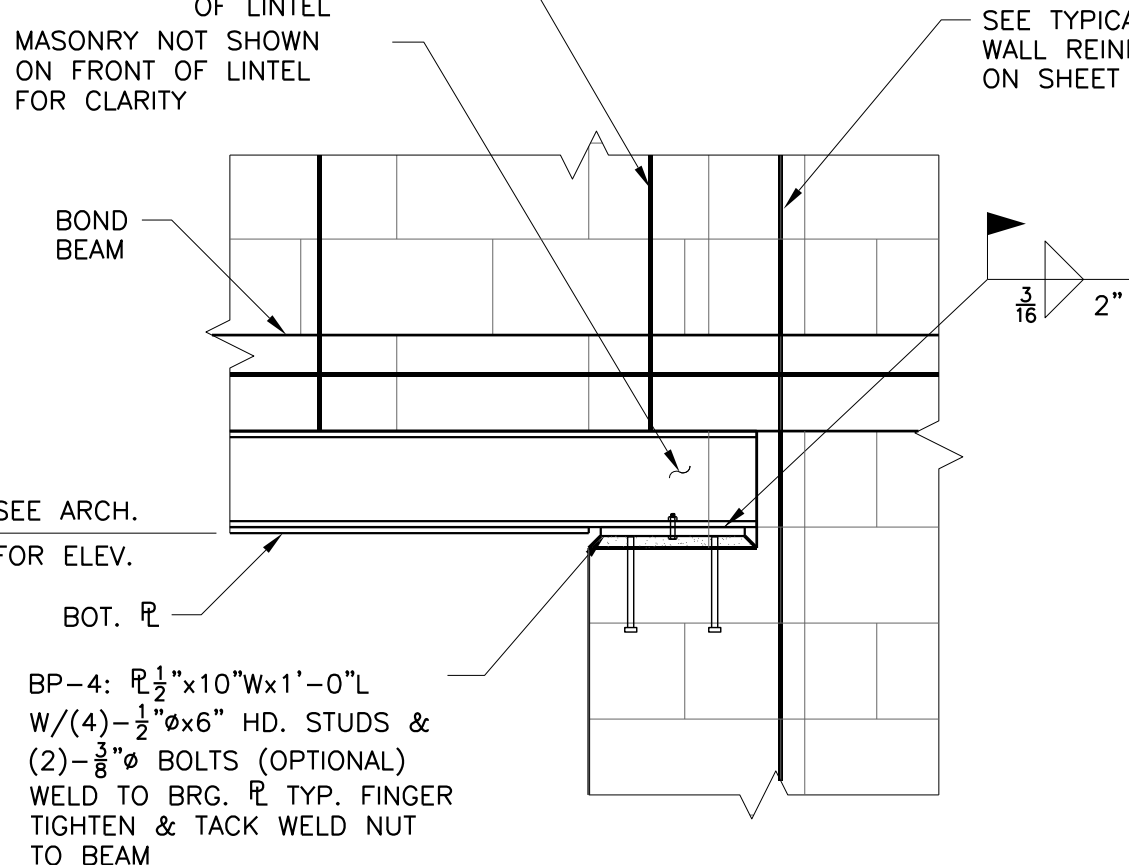
SECTION 3  
3/4"=1'-0"



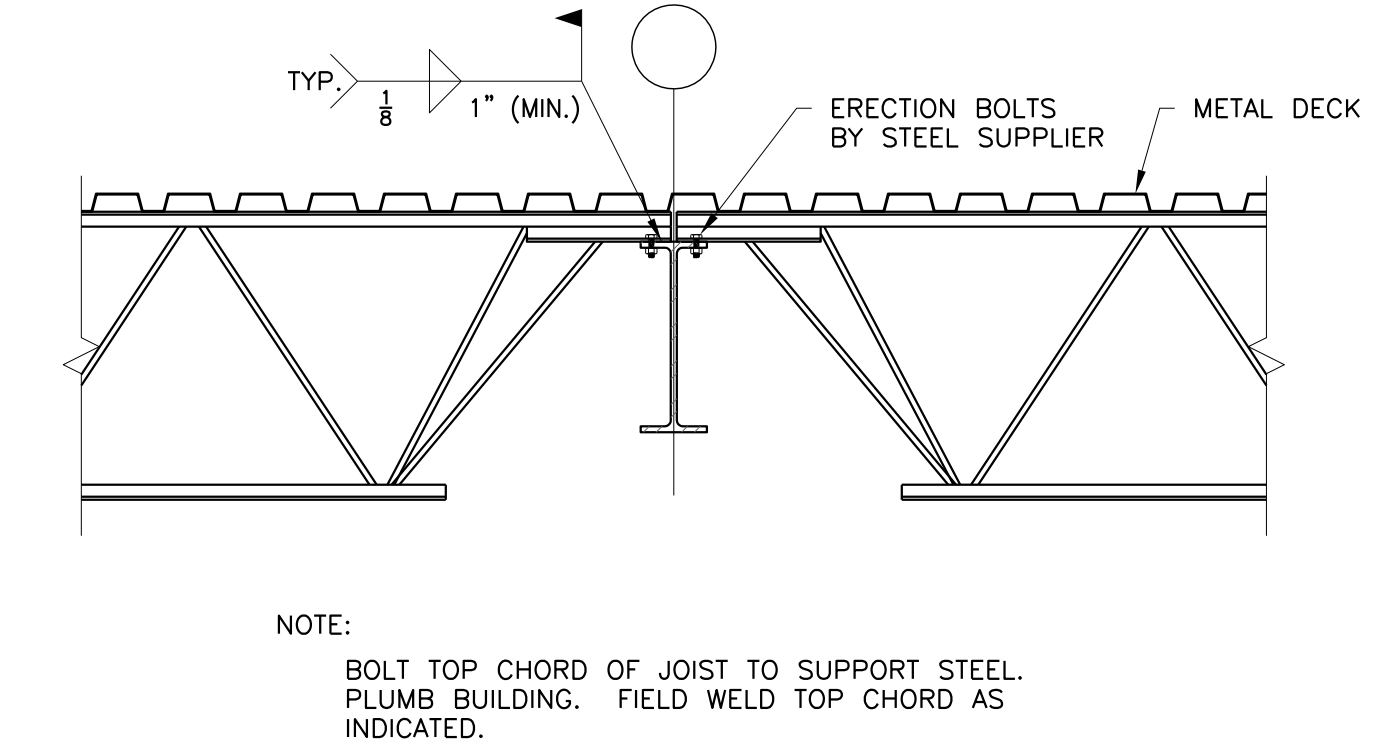
SECTION 4  
3/4"=1'-0"



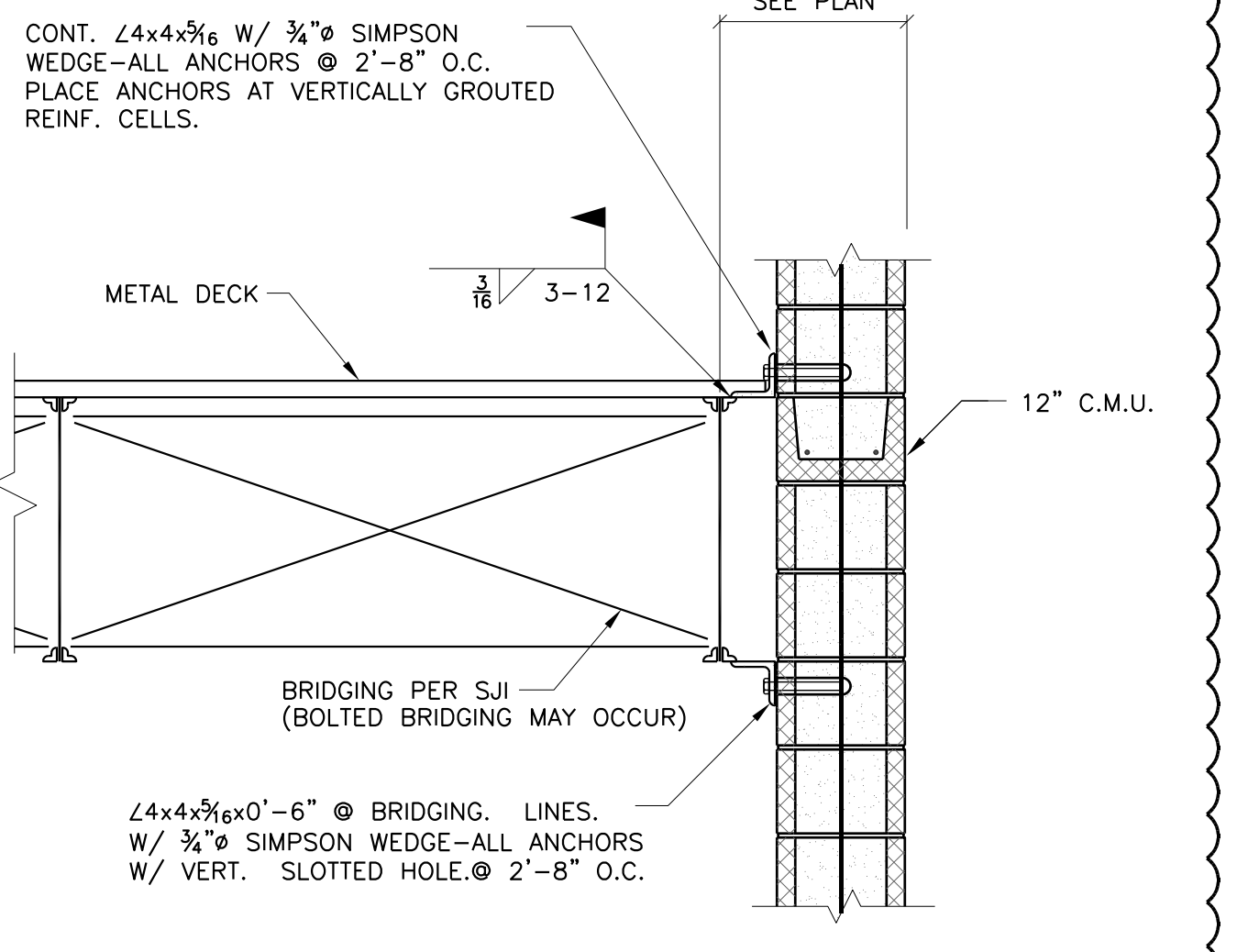
SECTION 5  
3/4"=1'-0"



SECTION 6  
3/4"=1'-0"



SECTION 7  
3/4"=1'-0"



SECTION 8  
3/4"=1'-0"

Maxwell Johnson Maher Architects  
105 Broadway Ave. 4th Floor  
Nashville, Tennessee 37201  
phone 615-244-8170  
fax 615-244-8181  
www.mjmarch.com  
mjm\_job# 07134

DICK'S Sporting Goods  
SPORTING INFORMATION STORE #301

All work, materials and systems shown in these plans and specifications including all referenced national accounts is the sole responsibility of the Licensed Landlord General Contractor to provide, schedule and install the complete and entire system as shown and referenced. Any reference to "General Contractor" in the plan and/or specifications refers to the Licensed and Landlord General Contractor. "Dick's Sporting Goods" has no scope of work or responsibility shown on this plan and/or specification.

CANTON MARKETPLACE CANTON, GA

CONSTRUCTION DOCUMENTS	
REV.	DATE
05-01-08	
BULLETIN B2	06-10-08

FRAMING DETAILS  
S7.0

sheet revisions date location owner information SPORTING INFORMATION STORE #301 DICK'S SPORTING GOODS ARCHITECTS SEAL CONSULTANT