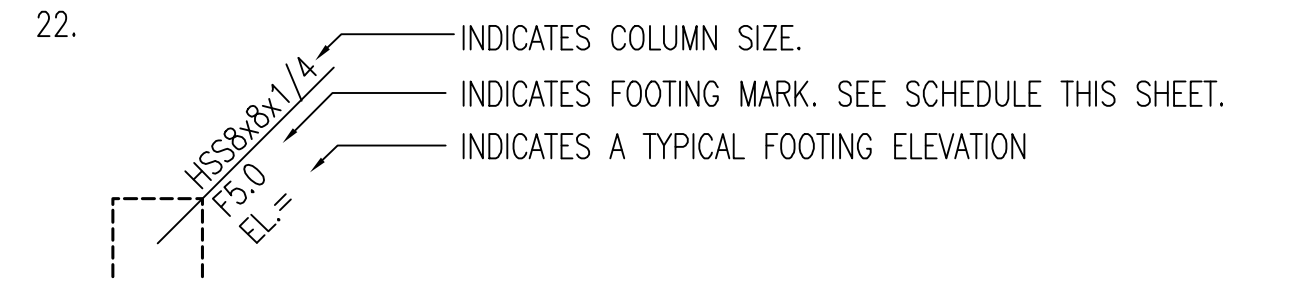


FOUNDATION PLAN NOTES

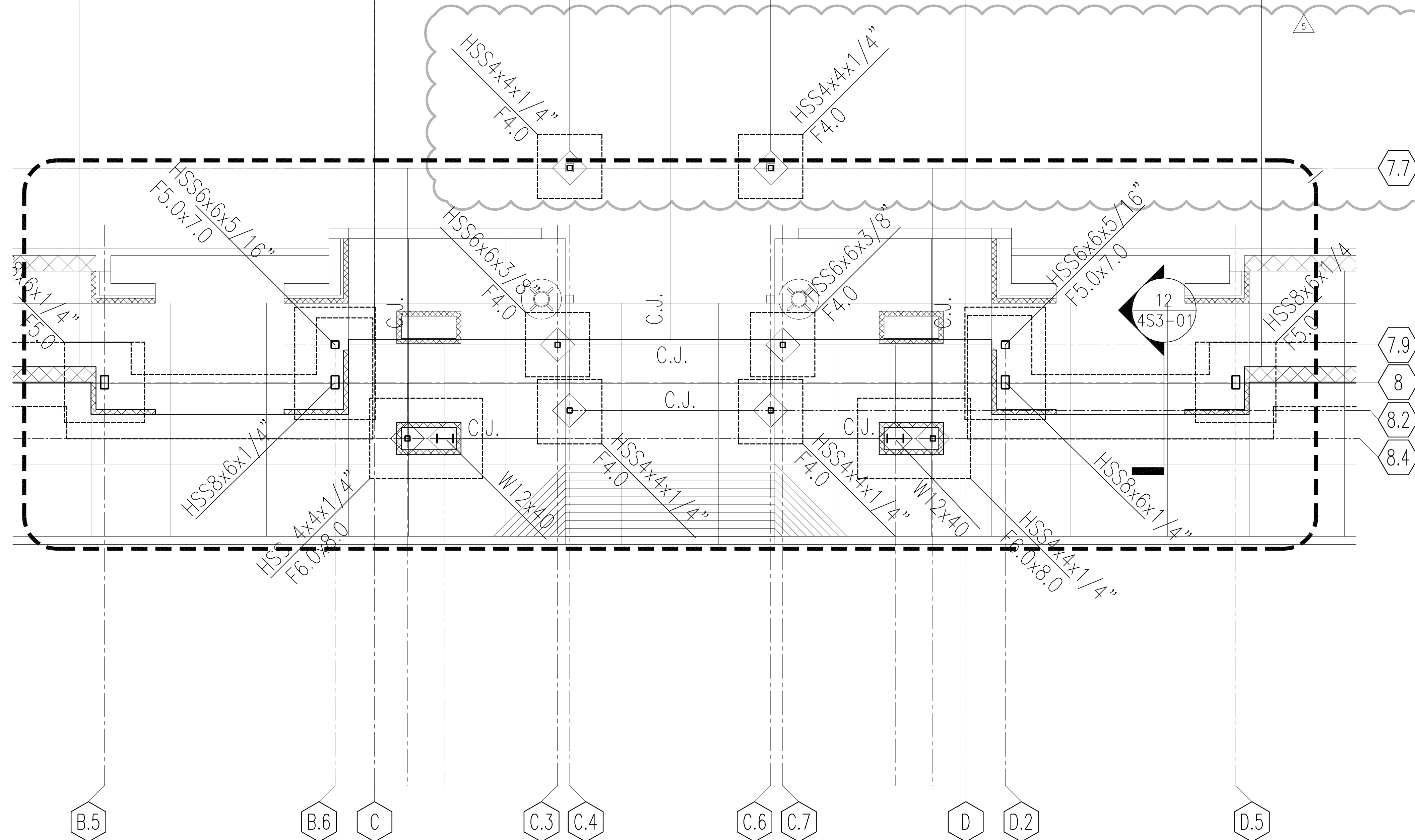
1. TYPICAL SLAB ON GRADE SHALL BE 4" CONCRETE SLAB W/ 6x6-W1.4xW1.4 WWF ON VAPOR RETARDER(SEE NOTE 2M ON S0-01) ON 4" OF FREE DRAINING CRUSHED STONE PER GEOTECHNICAL RECOMMENDATIONS. PROVIDE 18" OF LOW VOLUME CHANGE FILL BELOW ALL SLABS ON GRADE. ACCEPTABLE LVC FILL INCLUDES KDOT AB3, MDOT TYPE 3, OR OTHER APPROVED LVC FILL - SEE SOILS REPORT. SEE 15/S3-02 AND SOILS REPORT FOR REQTS AT BLDG PERIMETER.
2. REFER TO PLANS FOR TOP OF SLAB DATUM ELEVATION
3. "T/FTG." DENOTES TOP OF FOOTING ELEVATION NOTED ON PLANS.
4. SEE ARCH DWGS FOR ALL DIMENSIONS NOT SHOWN.
5. SEE DWG S0-01 FOR GENERAL NOTES.
6. F7.0 INDICATES FOOTING MARK. SEE SCHEDULE ON THIS DWG.
7. SEE DETAIL 3/S3-01 AND 8/S6-01 FOR TYPICAL BASE PLATE DETAILS.
8. C.J. INDICATES SLAB ON GRADE CONTROL JOINT OR CONSTRUCTION JOINT. FOR TYP. DETAIL SEE 18/S3-01 GC LOCATE CONSTRUCTION JOINTS AS REQUIRED.
9. SEE ARCH DWGS FOR ALL CONC SIDEWALKS AND STOOPS.
10. ALL FTGS. TO BE CENTERED UNDER WALLS, COLUMNS, BM BRG., PIERS & PILASTERS, UNO.
11. SEE 15/S3-01 FOR TYP. UTILITY OPN'G THROUGH WALL DETAIL.
12. R.M.P. DENOTES REINFORCED MASONRY PILASTER PER 14/S4-31. PROVIDE PILASTER VERT. REINF. FOR FULL WALL HEIGHT.
13. DENOTES TEMPORARY SOG BLOCK OUT. SEE ARCH DWGS FOR EXACT LOC'N. OF S.O.G. BLOCKOUTS. PROVIDE CMU WALL DOWELS PER 4/S3-01 FOR FUTURE SLAB POUR ADJACENT TO CMU WALL.
14. SEE DWG. S4-31 FOR TYPICAL MASONRY DETAILS.
15. SEE 7/S4-31 & 8/S4-31 FOR TYP. CMU WALL CORNER/ INTERSECTION DETAIL.
16. SEE 18/S4-31 FOR TYP. CMU WALL CONTROL/CONSTRUCTION JOINT DETAIL. SEE DWG. S0-01 FOR MAX SPACING CRITERIA.
17. SEE 5/S4-31 AND 6/S4-31 FOR TYP. REINF. AT ALL CMU WALL OPENINGS.
18. DENOTES 8" OR 12" CMU SHEAR WALL(12" TYP, 8" WHERE NOTED-SEE PLAN) W/ VERTICAL REINFORCING AS FOLLOWS UNLESS NOTED ON PLAN:
 8" CMU
 WALL HT. 19'-4" OR LESS BETWEEN DECK BEARING AND TOP OF FOOTING. #5@32" O.C. CTR'D IN WALL THICKNESS
 WALL HT. 23'-4" OR LESS BETWEEN DECK BEARING AND TOP OF FOOTING. #5@32" O.C. EA. FACE
 12" CMU
 WALL HT. 21'-4" OR LESS BETWEEN DECK BEARING AND TOP OF FOOTING. #5@48" O.C. CTR'D IN WALL THICKNESS
 WALL HT. 24'-8" OR LESS BETWEEN DECK BEARING AND TOP OF FOOTING. #5@32" O.C. CTR'D IN WALL THICKNESS
 WALL HT. 28'-8" OR LESS BETWEEN DECK BEARING AND TOP OF FOOTING. #6@32" O.C. CTR'D IN WALL THICKNESS

PROVIDE CONTINUOUS 16" DEEP CMU BOND BEAM AT REAR WALL OF ALL BUILDINGS TO BE USED AS FUTURE MAN-DOOR LINTEL. (ANY FUTURE MAN-DOOR LOCATION SHALL BE ANALYZED BY A LICENSED PROFESSIONAL ENGINEER FOR IN PLANE AND OUT-OF-PLANE FORCES.) REINFORCE W/2-#5 CONTINUOUS. BOTTOM OF BOND BEAM ELEV = 7'-4". SEE GENERAL NOTES FOR TYP HORIZ JOINT REINF AND ADD'L INFO.

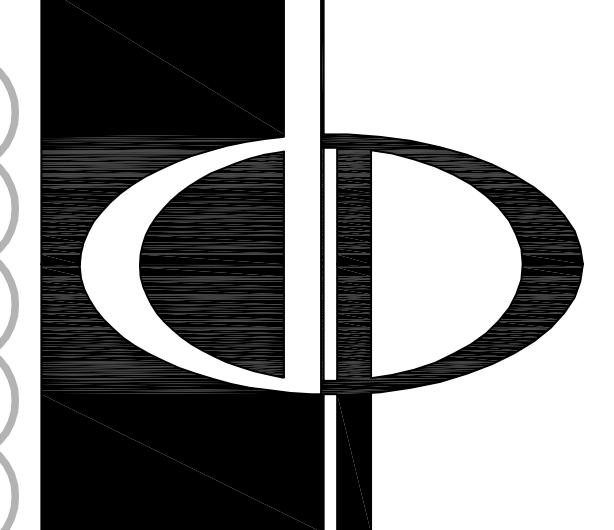
19. CCB DENOTES CRACK CONTROL BAR #4x4'-0" LONG CENTERED IN SLAB. LOCATE 1/2" CLEAR FROM CORNER OF SLAB ON GRADE BLOCK-OUT.
20. DENOTES STEPPED FOOTING SEE 7/S3-01 (4'-0" MIN. SPACING U.N.O.)
21. SEE PLAN FOR TRASH ENCLOSURE, COMPACTOR, AND TRANSFORMER/EQUIPMENT PADS. UNLESS NOTED OTHERWISE ON PLANS, EQUIPMENT PADS SHALL BE 7" THK REINF. CONCRETE S.O.G. W/#4@12" E.W. CENTERED IN SLAB. PROVIDE PERIMETER TURNDOWN SLAB EDGE AND ENCLOSURE WALL PER DETAILS ON S3-02.



FOOTING SCHEDULE			
MARK	SIZE	REINFORCING EA. WAY BOT UNO	COMMENTS
F4.0	4'-0" x 4'-0" x 18"	6-#5	
F5.0	5'-0" x 5'-0" x 18"	7-#5	
F6.0	6'-0" x 6'-0" x 18"	6-#6	
F7.0	7'-0" x 7'-0" x 18"	7-#6	
F4.0x6.0	4'-0" x 6'-0" x 18"	6-#5 LONG T&B 8-#5 SHORT T&B	
F5.0x7.0	5'-0" x 7'-0" x 18"	7-#5 LONG T&B 9-#5 SHORT T&B	
F6.0x8.0	6'-0" x 8'-0" x 18"	6-#6 LONG T&B 8-#6 SHORT T&B	



10 FOUNDATION PARTIAL PLAN AT ENTRY
 451-03 SCALE: 1/4" = 1'-0"



THE PRESTON PARTNERSHIP, LLC
 A MULTI-DISCIPLINARY DESIGN FIRM
 1000 ABERNATHY ROAD NE, SUITE 600
 ATLANTA, GEORGIA 30328
 TELEPHONE: 770 396 7248
 FAX: 770 396 2945
 WWW.THEPRESTONPARTNERSHIP.COM

CONSULTANT

ECHELON ENGINEERING, LLC
 1000 ABERNATHY ROAD NE, SUITE 310
 ATLANTA, GEORGIA 30328
 TELEPHONE: 770 396 1602
 FAX: 770 396 5562
 WWW.ECHELONENG.COM

PROJECT
TIFFANY SPRINGS

FOR

MARKETCENTER

FOR

Cousins
 COUSINS PROPERTIES INC.
 191 PEACHTREE STREET NE
 ATLANTA, GA 30303-1740
 PHONE (404) 407-1000

PRINTED _____
 PERMIT SET 07/27/07
 REVISIONS
 1/3 TSA COMMENTS 01/18/08

DATE 07/27/07
 JOB NUMBER 0615706
 DRAWN BY JC
 CHECKED BY JD
 SHEET TITLE BLDG 400-FOUNDATION PLAN
 SHEET NUMBER 4S1-03
 COMMENTS _____
 ISSUED FOR CONSTRUCTION

