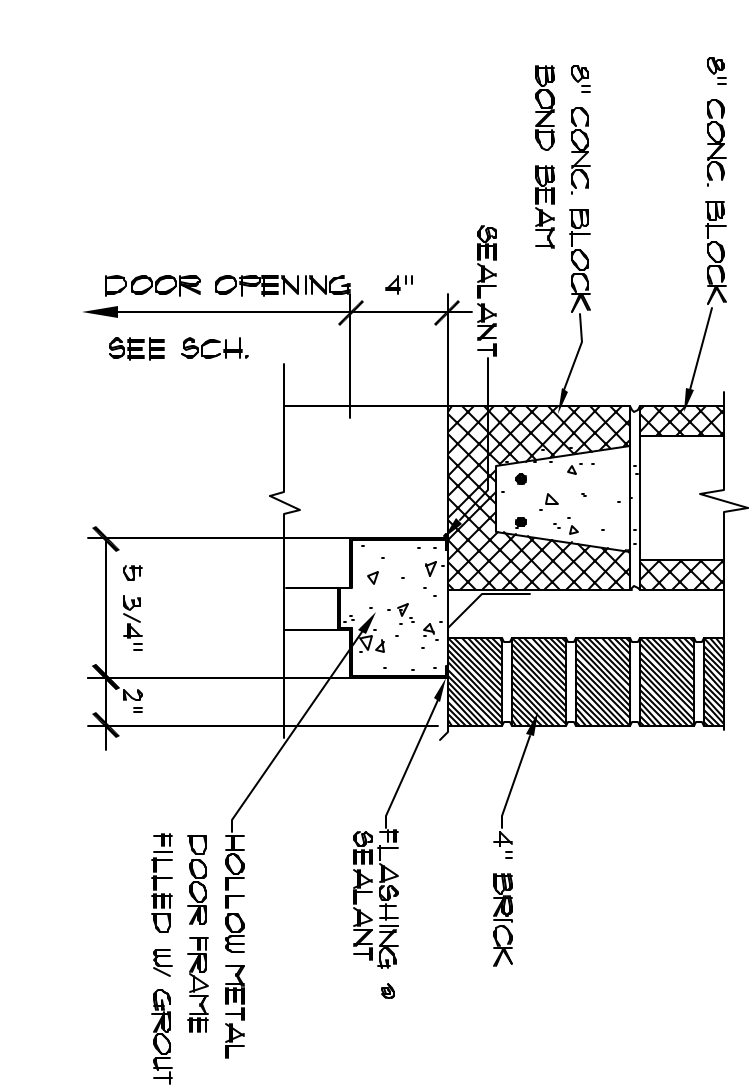
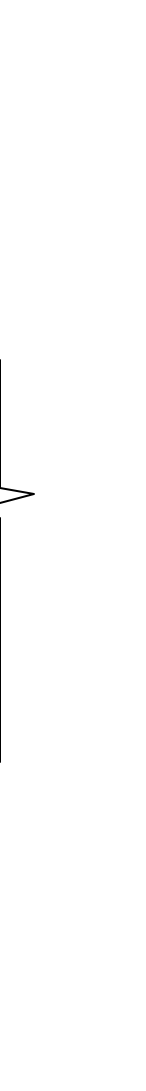


DOOR SCHEDULE

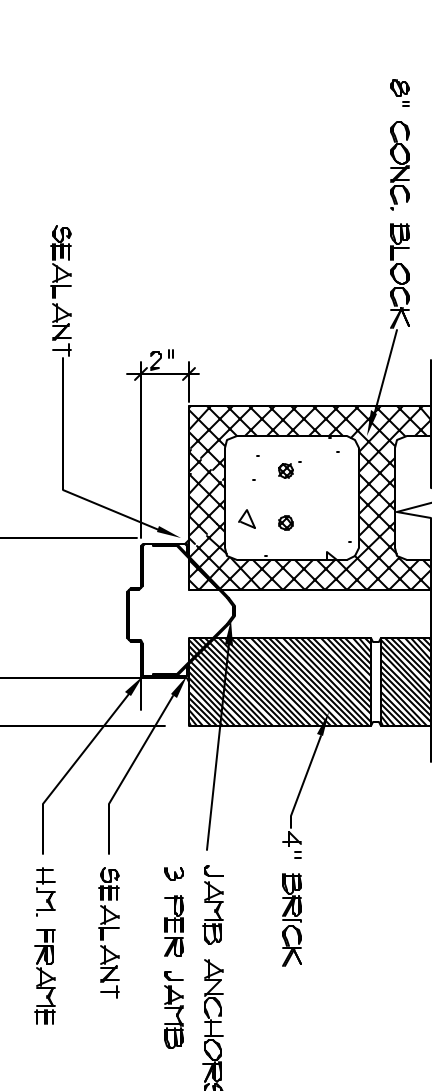
DOOR NO.	DOOR TYPE	MATERIAL	SIZE			FRAME			FIRE RATING	CLOSER	HDURE SET	REMARKS				
			W	X	H	TH	HEAD	JAMB					SILL	MAT.		
1	C	ALUM.	3'-0"	X	1'-0"	1 3/4"	-	-	3/4-60	2/4-60	3/4-60	ALUM.	YES	NO	1	
2	B	H.M.	3'-0"	X	1'-0"	1 3/4"	-	-	1/4-60	2/4-60	3/4-60	MTL.	NO	NO	2	
3	A	H.C.W.	3'-0"	X	1'-0"	3/4"	4/4-60	5/4-60	5/4-60	5/4-60	WOOD	-	NO	NO	3	H.C. ACCESSIBILITY 5/8" ON R/L & FREE HUNG



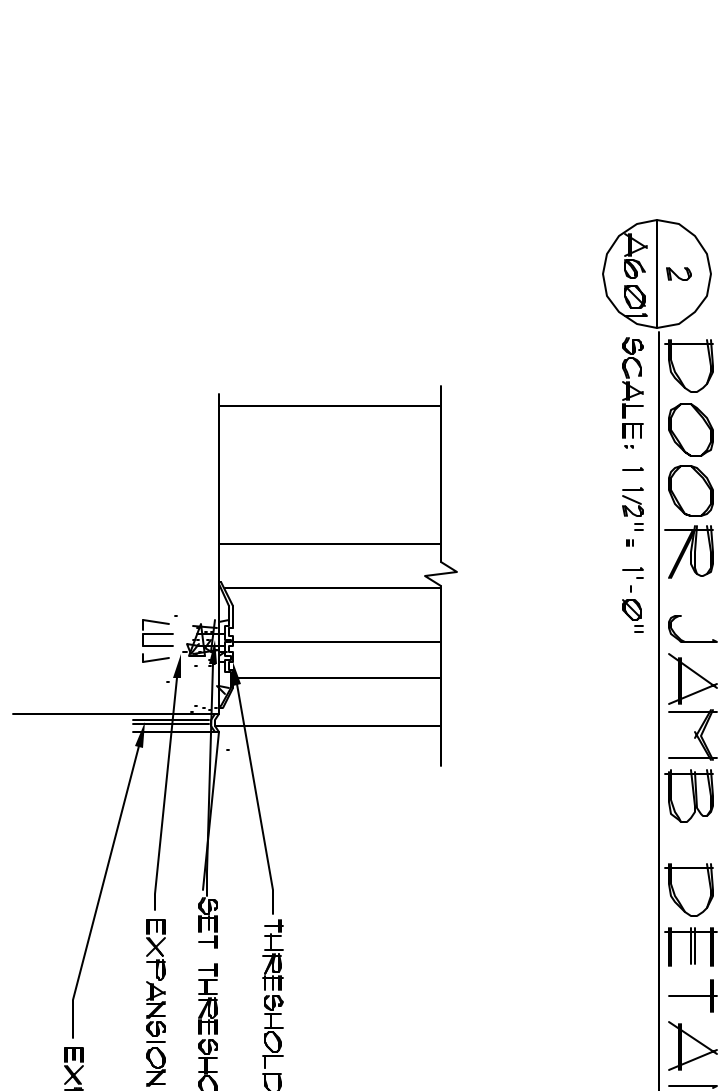
1 DOOR HEAD DETAIL
SCALE: 1/2" = 1'-0"



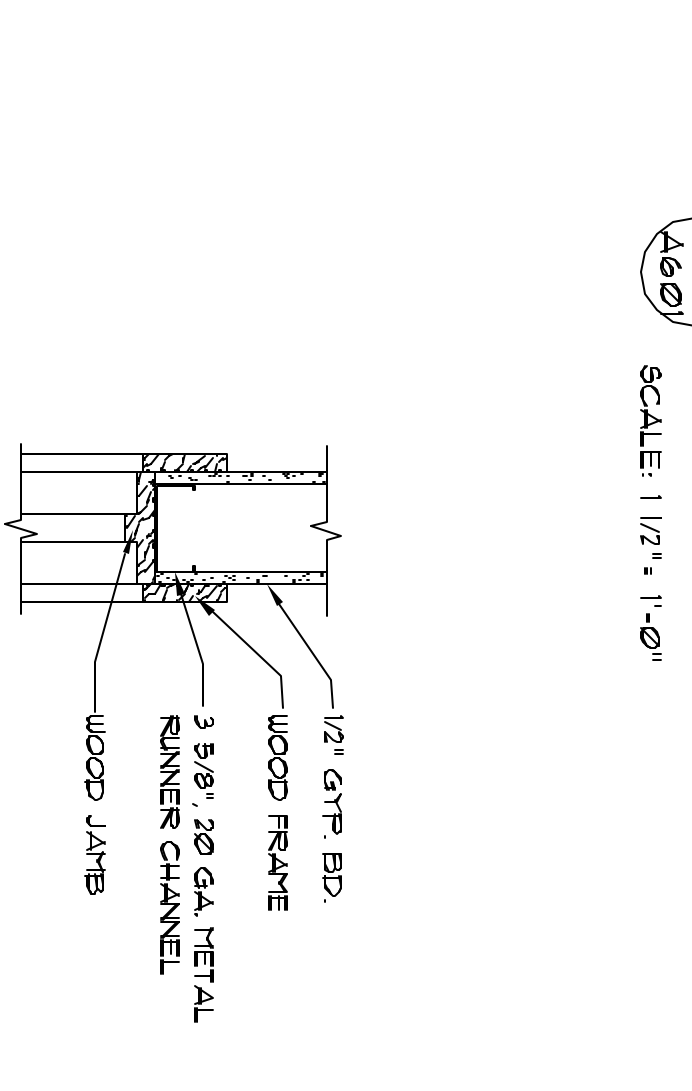
2 DOOR JAMB DETAIL
SCALE: 1/2" = 1'-0"



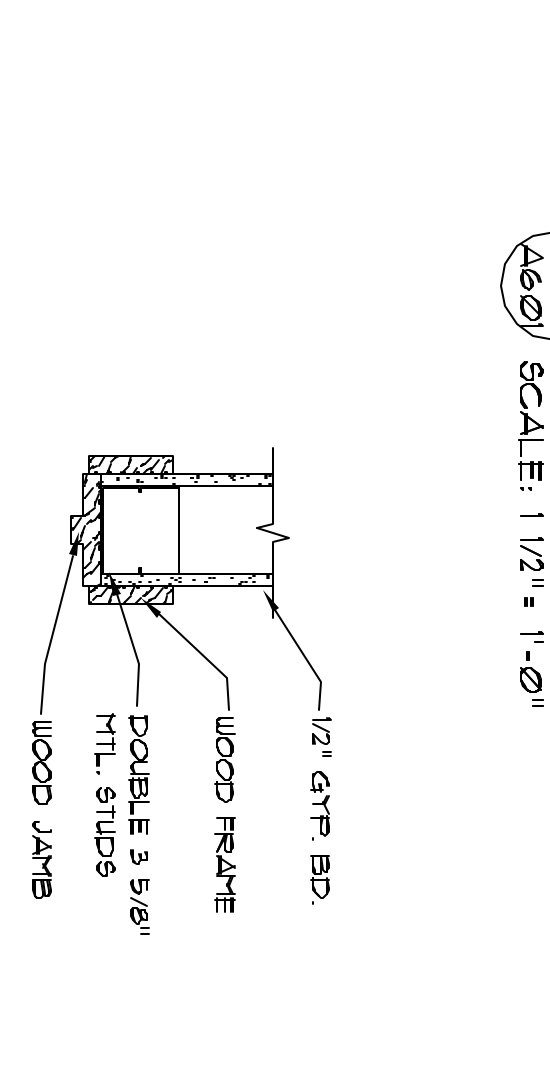
3 DOOR SILL SECTION
SCALE: 1/2" = 1'-0"



4 DOOR HEAD DETAIL
SCALE: 1/2" = 1'-0"



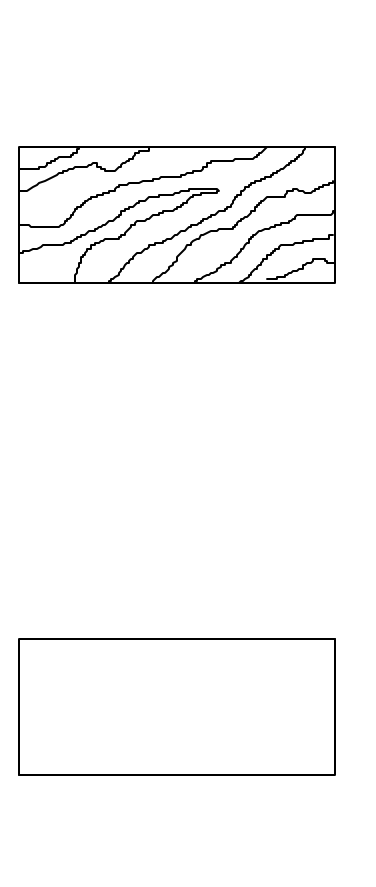
5 DOOR JAMB DETAIL
SCALE: 1/2" = 1'-0"



6 DOOR SILL SECTION
SCALE: 1/2" = 1'-0"

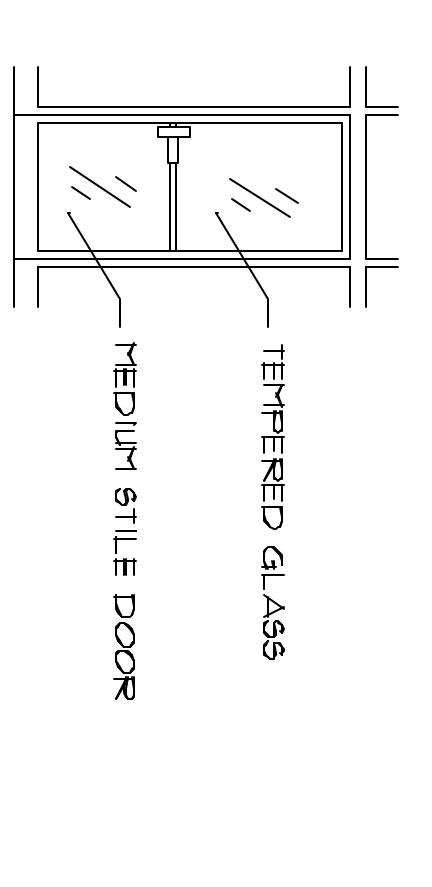
LEGEND

- ALUM. - ALUMINUM
- H.C.W. - HOLLOW CORE WOOD
- H.M. - HOLLOW METAL
- W.D. - WOOD
- SEE MANUF. - SEE MANUFACTURERS SPEC.
- MTL. - METAL



FLUSH HOLLOW CORE WOOD (A)

FLUSH HOLLOW METAL (B)



ALUMINUM STOREFRONT (C)

DOOR TYPES
SCALE: 1/4" = 1'-0"

NOTES:

- ALL INTERIOR DOORS AND FRAMES ARE TO BE PAINTED.
- ALL INTERIOR DOORS TO BE FREE HUNG WOOD DOORS IN WOOD FRAMES.
- ALL DOOR HARDWARE IS TO BE AS SPECIFIED OR ACCEPTABLE SUBSTITUTE THAT MEET ALL ADA AND BUILDING CODE REQUIREMENTS. ALL LOCKSETS ARE TO BE LEVER TYPE UNLESS NOTED OTHERWISE.

DOOR HARDWARE SETS

SET NO.1 ENTRANCE 3'-0" X 1'-0"
ALUM. DOOR/ALUM. FRAME
COMPLETE DOOR HARDWARE AND WEATHERSEAL & BY KALNEER OR ACCEPTABLE SUBSTITUTE
CLOSER ON SWINGING DOORS
ALL HARDWARE TO MATCH STOREFRONT FINISH.

SET NO.2 REAR EXIT DOOR 3'-0" X 1'-0"
HOLLOW METAL DOOR/HOLLOW METAL FRAME
1 1/2 PAIRS BUTTS 179, 4 1/2 X 4 1/2 USP NON REMOVABLE FINIS MOSTISE LOCKSET
3/4" B.S. (10275 STRIKE)
1 GIAN DOOR STOP BRIC (HEAVY DUTY)
3 SILENCERS 25-65-6" X 3/8"
1 WEATHERSTRIP 1024V-36" ALUMINUM
1 SET WEATHERSTRIP 160A (3'-0" X 1'-0") ALUM. & VINYL LATCH GUARD

SET NO.3 DOOR 3'-0" X 1'-0"
HOLLOW CORE DOOR/WOOD FRAME
1 1/2 PAIR BUTTS 179, 3 1/2 X 3 1/2 USP
1 LOCKSET 4409 (BATH/BEEDROOM PRIVACY) LOCK LEVON 613 (2 3/4" BACKSET) (10276 STRIKE)
1 FLOOR STOP 456 PA 18
3 SILENCERS

project: BELLE ISLE SQUARE RENOVATION AND ADDITION
address: ROSWELL ROAD SANDY SPRINGS GA
for: DEUBERRY CAPITAL 1545 PEACHTREE ST. ATLANTA, GA 30309
sheet description: DOOR SCHEDULE & DETAILS
drawn: KAU
checked: ---
job: 06-110
ddle 07.12.06

WARE + ASSOCIATES ARCHITECTS
Lenox Center
3355 Lenox Road NE
Suite 1025
Atlanta, GA 30326
T 404.815.9122
F 404.815.9123
www.wa4associates.com

Copyright © 2006 by WARE + ASSOCIATES, INC.
This drawing is the intellectual property of WARE + ASSOCIATES, INC. and shall remain the property of the Architect. Any and all reproduction of this drawing without the written permission of the Architect is prohibited.

seal for construction