

ELECTRICAL POWER PLAN
SCALE 1/8" = 1'-0"

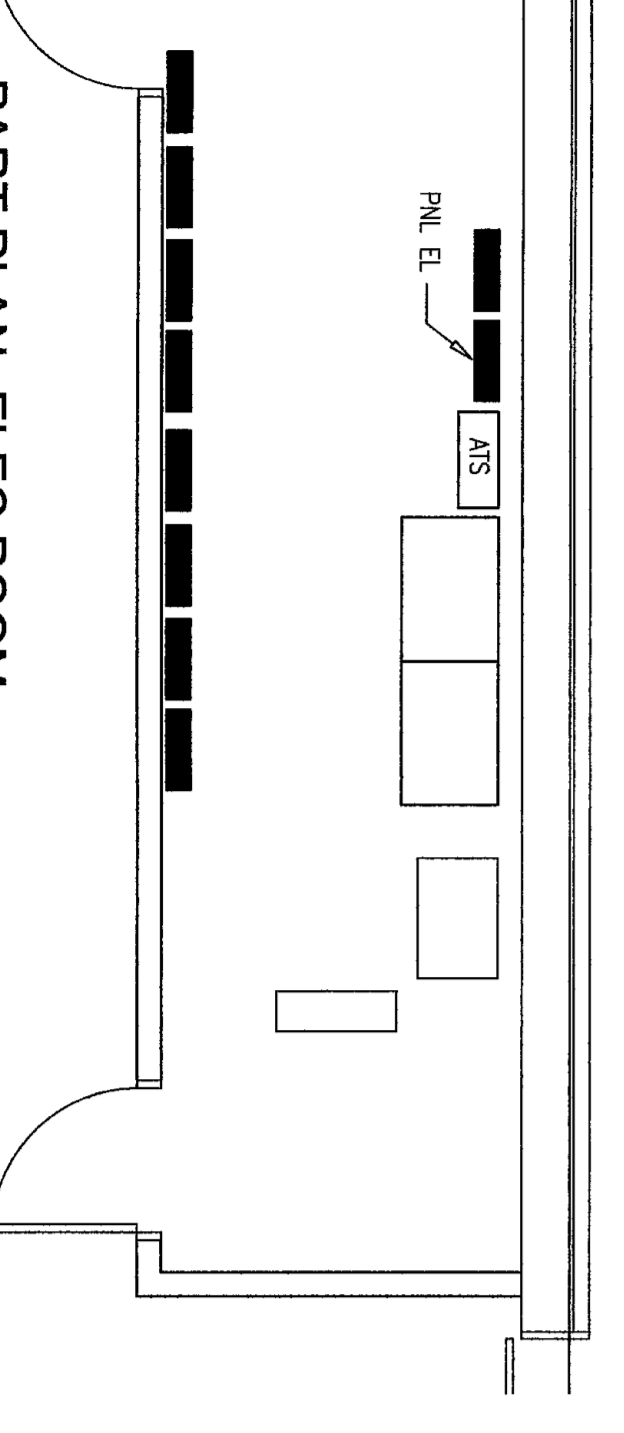
COORDINATE DIMENSIONS WITH THE ARCHITECTURAL LAYOUT DIMENSION PLANS

NOTES:
THIS DRAWING IS ISSUED FOR INFORMATION ONLY. UNDERGROUND RACEWAYS AND DUCTS FOR THE REFRIGERATION LINES WILL BE INSTALLED BY OTHERS AS A PART OF THE SHELL BUILDING, UNLESS INDICATED OTHERWISE.

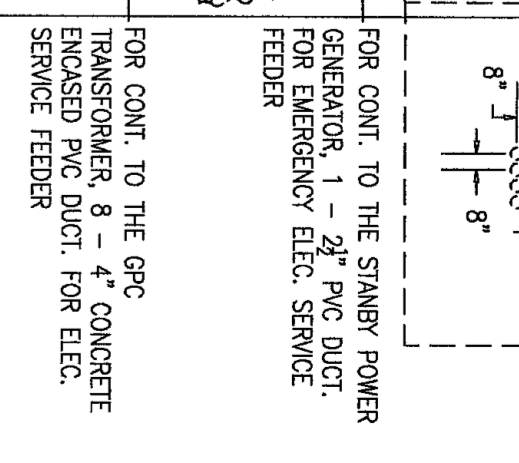
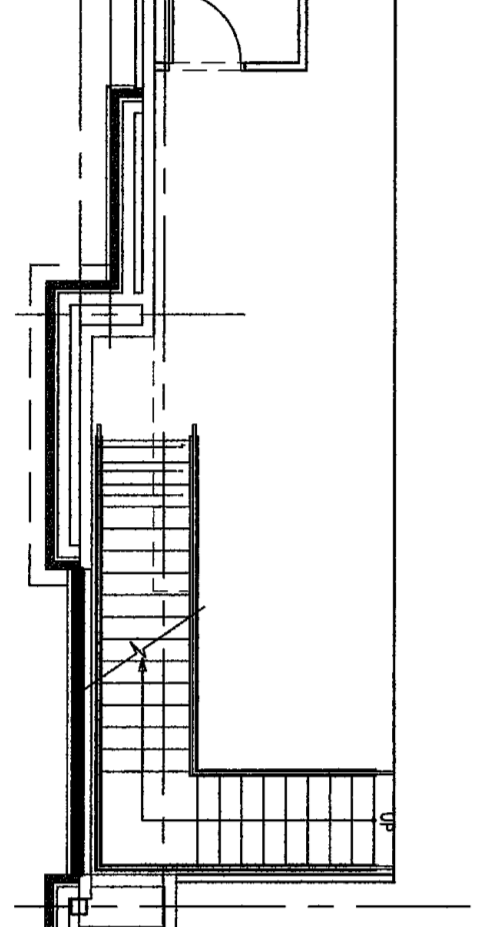
NOTES:

1. STAB UP RACEWAY FOR RISER UP COLUMN TO HANGBOARD
2. STAB UP RACEWAYS FOR LIGHT MOUNTED FROM OUTLET
3. STAB UP CONDUIT FOR RISER UP COLUMN WALL TO POWER
4. STAB UP CONDUIT FOR RISER UP COLUMN WALL TO POWER
5. STAB UP AND CAP CONDUIT 5" ON CENTER FOR FLOOR JUNCTION BOX 11" AND FUTURE DESKTOP POWER
6. STAB UP AND CAP CONDUIT 5" ON CENTER FOR RECEPTACLE AND FUTURE DESKTOP POWER
7. STAB UP CONDUIT AND CAP FOR ELECTRICAL OUTLET IN
8. STAB UP CONDUIT AND CAP FOR FLOOR JUNCTION BOX
9. DIRECT RISES, 8" SCHEDULE 40 RIGID RACEWAY FOR REFRIGERATION LINES, SEE MECHANICAL FOR ADDITIONAL INFORMATION.
10. NUMBER OF 8" DUCTS AS INDICATED.
11. REFRIGERATION LINES, SEE MECHANICAL FOR ADDITIONAL INFORMATION.
12. ALL UNIDENTIFIED UNDERGROUND RACEWAYS SHALL BE
13. FOR THE RISE AND RETURN TO THE MECHANICAL ROOM
14. STAB UP IN FLOOR
15. STAB UP RACEWAYS FOR RISER UP COLUMN TO HANGBOARD
16. STAB UP RACEWAYS FOR RISER UP COLUMN TO HANGBOARD
17. STAB UP RACEWAYS FOR RISER UP COLUMN TO HANGBOARD
18. STAB UP RACEWAYS FOR RISER UP COLUMN TO HANGBOARD
19. STAB UP RACEWAYS FOR RISER UP COLUMN TO HANGBOARD
20. STAB UP RACEWAYS FOR RISER UP COLUMN TO HANGBOARD

PART PLAN - ELEC ROOM
SCALE 1/4" = 1'-0"



PART PLAN - 2ND FLOOR OFFICE
SCALE 1/8" = 1'-0"



SHEET TITLE
UNDER FLOOR ELECTRICAL LAYOUTS

A-MART
2645 NORTH BERKELEY LAKE ROAD
BUILDING 'C'
DULUTH, GEORGIA 30096

REV.	DESCRIPTION	DATE
1	ISSUED FOR PERMITS	11-20-06
2	REVISIONS	11-20-06
3	REVISIONS	11-20-06
4	REVISIONS	11-20-06
5	REVISIONS	11-20-06
6	REVISIONS	11-20-06
7	REVISIONS	11-20-06
8	REVISIONS	11-20-06
9	REVISIONS	11-20-06
10	REVISIONS	11-20-06
11	REVISIONS	11-20-06
12	REVISIONS	11-20-06

Engineering Consultants Services, Inc.
ATLANTA, GEORGIA 770 623-0353
NASHVILLE, TENNESSEE 615 320-5667

YUNG ARCHITECTURE
1710 Wilwat Dr. Suite #B
Norcross, GA 30093
Tel 770-328-6538
Fax 770-328-6433
yungarchitecture@yahoo.com

YUNG ARCHITECTURE
1710 Wilwat Dr. Suite #B
Norcross, GA 30093
Tel 770-328-6538
Fax 770-328-6433
yungarchitecture@yahoo.com